

WAAS CH 48825 W28A	APP CRS 303°	Rwy Ldg 10000 TDZE 6606 Apt Elev 6606
--	------------------------	--

RNAV (GPS) RWY 28

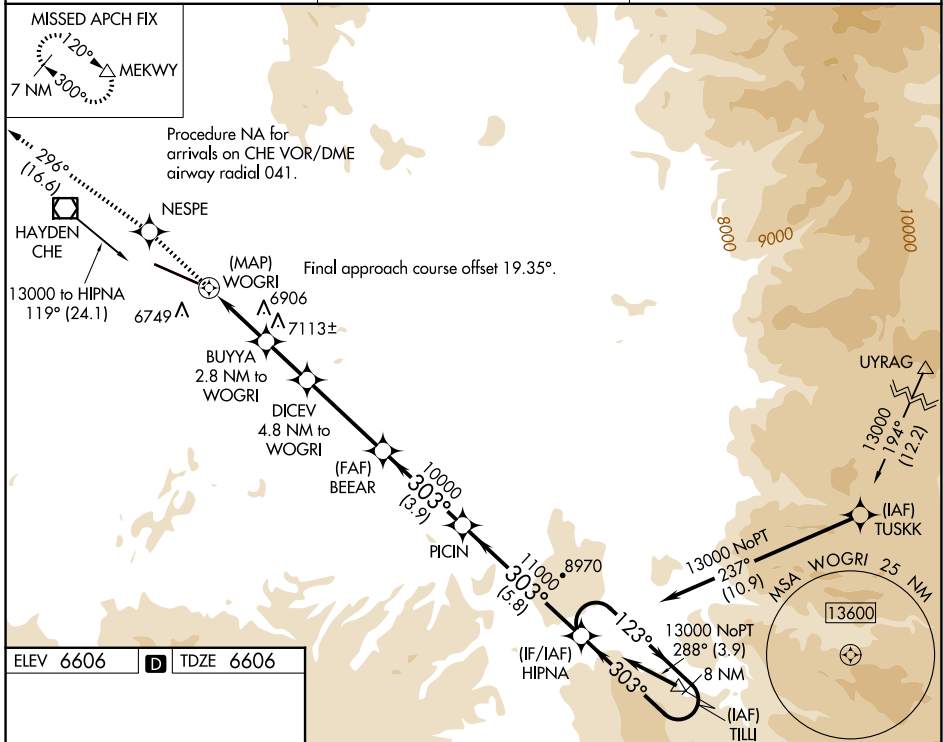
YAMPA VALLEY (HDN)

RNP APCH.

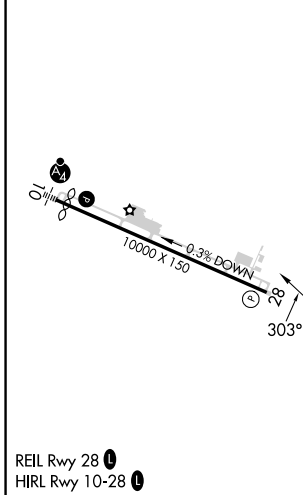
⚠ When local altimeter not received use Craig-Moffat altimeter setting and increase all MDA 100 feet, increase LP and LNAV Cat C/D visibility ¼ mile. Rwy 28 helicopter visibility reduction below ¾ SM NA.

MISSED APPROACH: Climb to 10000 direct NESPE and on track 296° to MEKWY and hold.

AWOS-3PT 119.275	DENVER CENTER 120.475 235.975	UNICOM 123.0 (CTAF) 0
----------------------------	---	---------------------------------



ELEV 6606	D	TDZE 6606
-----------	---	-----------



10000	NESPE	MEKWY	HIPNA	
↑	tr 296°	△	8 NM Holding Pattern	
	DICEV	BEEAR	PICIN	HIPNA
	4.8 NM to WOGRI			123° → 13000
	BUYYA			← 303°
	2.8 NM to WOGRI			
	WOGRI			
	7820	8600	10000	11000
	0.5	2.8 NM	2 NM	3.7 NM
			3.9 NM	5.8 NM
CATEGORY	A	B	C	D
LP MDA	7000-1	394 (400-1)	7000-1½	394 (400-1½)
LNAV MDA	7080-1	474 (500-1)	7080-1¾	474 (500-1¾)
CIRCLING	7220-1	614 (700-1)	7660-3 1054 (1100-3)	8180-3 1574 (1600-3)

SW-1, 11 JUN 2026 to 09 JUL 2026

SW-1, 11 JUN 2026 to 09 JUL 2026