

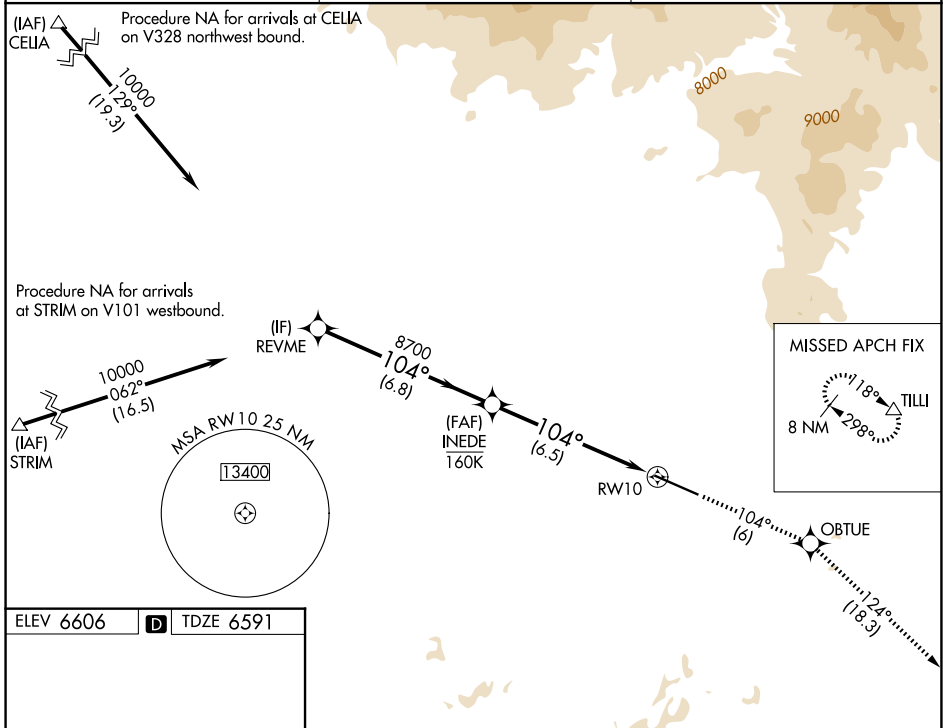
|             |          |             |
|-------------|----------|-------------|
| APP CRS     | Rwy Ldg  | <b>9490</b> |
| <b>104°</b> | TDZE     | <b>6591</b> |
|             | Apt Elev | <b>6606</b> |

# RNAV (RNP) Z RWY 10

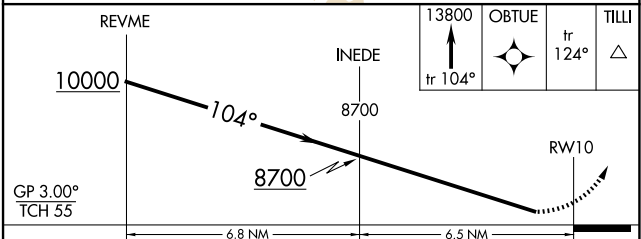
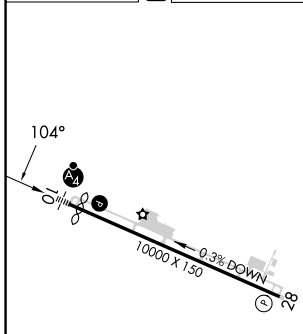
YAMPA VALLEY (HDN)

|  |       |   |
|--|-------|---|
| RNP AR APCH-GPS.   | MALSF | MISSED APPROACH: Climb to 13800 on track 104° to OBTUE and on track 124° to TILLI and hold, continue climb-in-hold to 13800.<br>*Missed approach requires minimum climb of 286 feet per NM to 8900. |
| <p><b>⚠</b> Rwy 10 helicopter visibility reduction below 3/4 SM NA. For uncompensated Baro-VNAV systems, procedure NA below -28°C or above 54°C. Inop table does not apply to RNP 0.30. For inop ALS, increase RNP 0.20 all Cats visibility to 2 SM.</p> |       |   |

|                            |   |                                 |
|----------------------------|---|---------------------------------|
| AWOS-3PT<br><b>119.275</b> | DENVER CENTER<br><b>120.475 235.975</b> | UNICOM<br><b>123.0 (CTAF) 0</b> |
|----------------------------|---|---------------------------------|



|           |          |           |
|-----------|----------|-----------|
| ELEV 6606 | <b>D</b> | TDZE 6591 |
|-----------|----------|-----------|



| CATEGORY     | A | B          | C               | D |
|--------------|---|------------|-----------------|---|
| RNP 0.20 DA* |   | 7016-1     | 425 (500-1)     |   |
| RNP 0.20 DA  |   | 7344-1 7/8 | 753 (800-1 7/8) |   |
| RNP 0.30 DA  |   | 7949-5     | 1358 (1400-5)   |   |

**AUTHORIZATION REQUIRED**

SW-1, 11 JUN 2026 to 09 JUL 2026

SW-1, 11 JUN 2026 to 09 JUL 2026