

VOR/DME CHE 115.6 Chan 103	APP CRS 285°	Rwy Ldg TDZE Apt Elev N/A 6606
---	------------------------	---

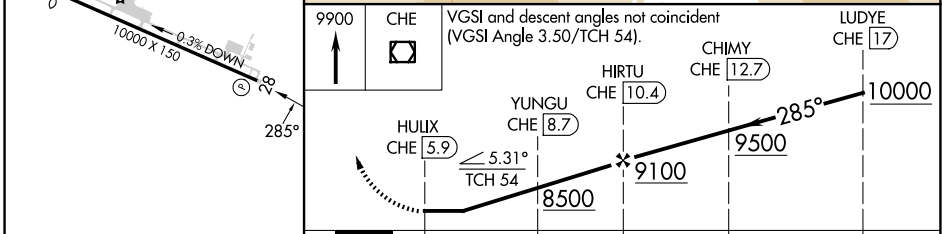
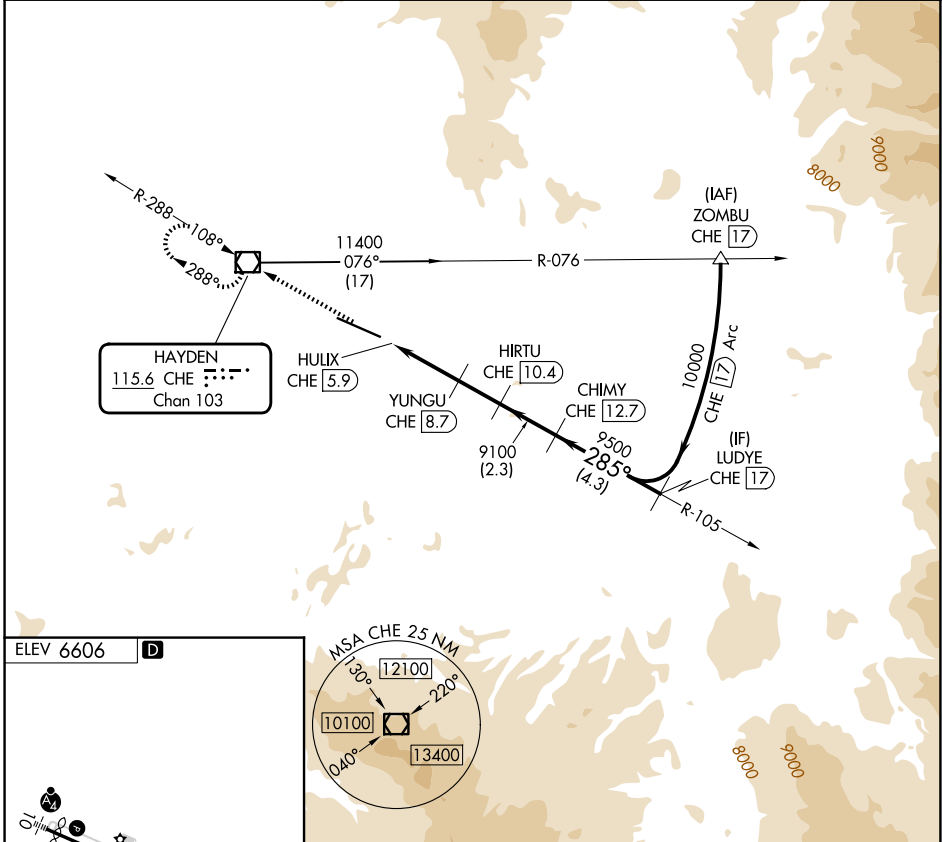
VOR-B
YAMPA VALLEY (HDN)

DME required.

▼
▲ Rwy 28 helicopter visibility reduction below ¾ SM NA.

MISSED APPROACH: Climb to 9900 direct CHE VOR/DME and hold, continue climb-in-hold to 9900.

AWOS-3PT 119.275	DENVER CENTER 120.475 235.975	UNICOM 123.0 (CTAF) 0
----------------------------	---	---------------------------------



REIL Rwy 28 0	HIRL Rwy 10-28 0
---------------	------------------

SW-1, 11 JUN 2026 to 09 JUL 2026

SW-1, 11 JUN 2026 to 09 JUL 2026