

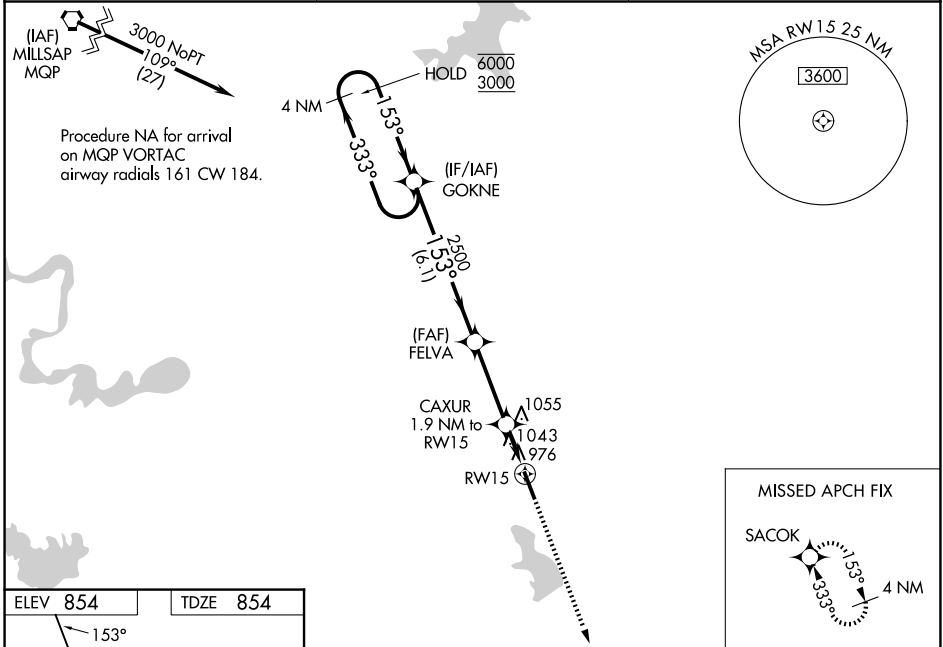
WAAS CH 61331 W15A	APP CRS 153°	Rwy Ldg TDZE Apt Elev	5512 854 854
--	------------------------	-----------------------------	---

RNAV (GPS) RWY 15

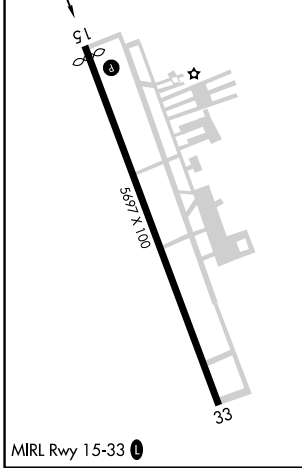
CLEBURNE RGNL (CPT)

RNP APCH.	MISSED APPROACH: Climb to 3000 direct SACOK and hold.
<p>▼ For uncompensated Baro-VNAV systems, LNAV/VNAV NA below -16°C or above 54°C. Rwy 15 helicopter visibility reduction below ¾ SM NA.</p> <p>▲</p>	

AWOS-3 119.525	LONE STAR APP CON 135.975 379.9	UNICOM 122.8 (CTAF) 0
--------------------------	---	---------------------------------



ELEV 854	TDZE 854
-----------------	-----------------



4 NM Holding Pattern	GOKNE	FELVA	CAXUR	RWY 15
6000 ← 333°	3000 → 153°	2500 ↘ 153°	*1480	
GP 3.00° TCH 39	6.1 NM	3.2 NM	1.9 NM	
3000	SACOK			
				*LNAV only.
				CAXUR 1.9 NM to RWY 15
				RWY 15
CATEGORY	A	B	C	D
LPV DA		1240-1 ³ / ₈	386 (400-1 ³ / ₈)	
LNAV/VNAV DA		1397-1 ⁷ / ₈	543 (600-1 ⁷ / ₈)	
LNAV MDA	1360-1	506 (600-1)	1360-1 ³ / ₈	506 (600-1 ³ / ₈)
CIRCLING	1400-1	546 (600-1)	1680-2 ¹ / ₂ 826 (900-2 ¹ / ₂)	1700-2 ³ / ₄ 846 (900-2 ³ / ₄)

SC-2, 11 JUN 2026 to 09 JUL 2026

SC-2, 11 JUN 2026 to 09 JUL 2026