

WAAS CH <b>60941</b> <b>W23A</b>	APP CRS <b>227°</b>	Rwy Ldg TDZE Apt Elev	<b>5003</b> <b>799</b> <b>800</b>
--	------------------------	-----------------------------	---

# RNAV (GPS) RWY 23

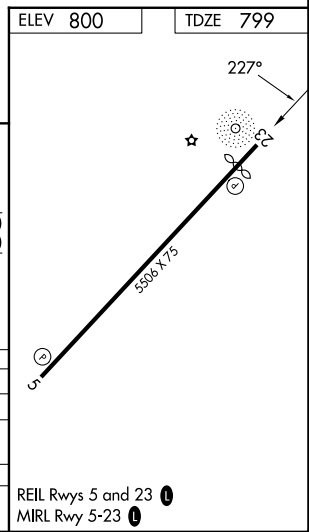
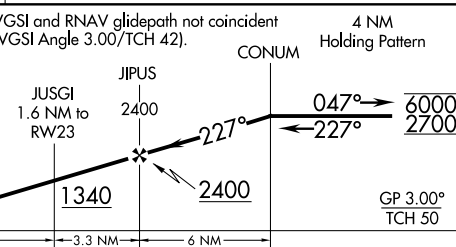
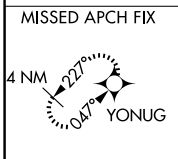
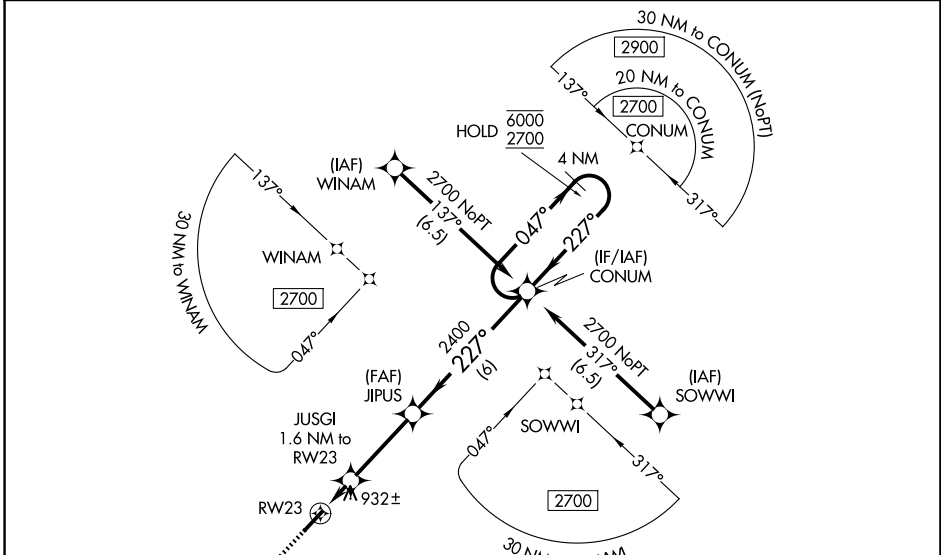
CRAWFORDSVILLE RGNL (CFJ)

RNP APCH - GPS.

▼ Rwy 23 helicopter visibility reduction below  $\frac{3}{4}$  SM NA. For uncompensated Baro-VNAV systems, LNAV/VNAV NA below -16°C or above 54°C. Baro-VNAV NA when using GPC altimeter setting. When local altimeter setting not received, use GPC altimeter setting: increase LPV DA to 1111 feet, LNAV/VNAV DA to 1252 feet and all visibilities  $\frac{1}{4}$  SM; increase all MDAs 60 feet and LNAV and Circling Cats C and D visibilities  $\frac{1}{4}$  SM.

▲ MISSED APPROACH: Climb to 2700 direct YONUG and hold.

AWOS-3PT <b>125.65</b>	INDIANAPOLIS APP CON <b>119.05 317.8</b>	UNICOM <b>122.8 (CTAF) 0</b>
---------------------------	---	---------------------------------



CATEGORY	A	B	C	D
LPV DA		1059-1	260 (300-1)	
LNAV/VNAV DA		1200-1½	401 (400-1½)	
LNAV MDA	1200-1	401 (400-1)	1200-1½	401 (400-1½)
CIRCLING	1240-1 440 (500-1)	1260-1 460 (500-1)	1440-1¾ 640 (700-1¾)	1520-2¼ 720 (800-2¼)

EC-2, 11 JUN 2026 to 09 JUL 2026

EC-2, 11 JUN 2026 to 09 JUL 2026