

WAAS CH <b>82739</b> <b>W05A</b>	APP CRS <b>047°</b>	Rwy Ldg TDZE <b>797</b> Apt Elev <b>800</b>	<b>5506</b> <b>797</b> <b>800</b>
--	------------------------	---	---

# RNAV (GPS) RWY 5

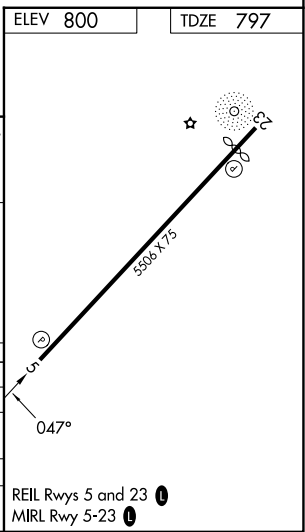
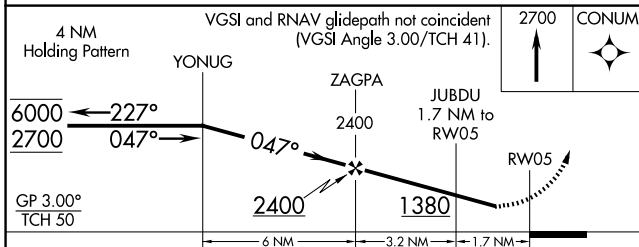
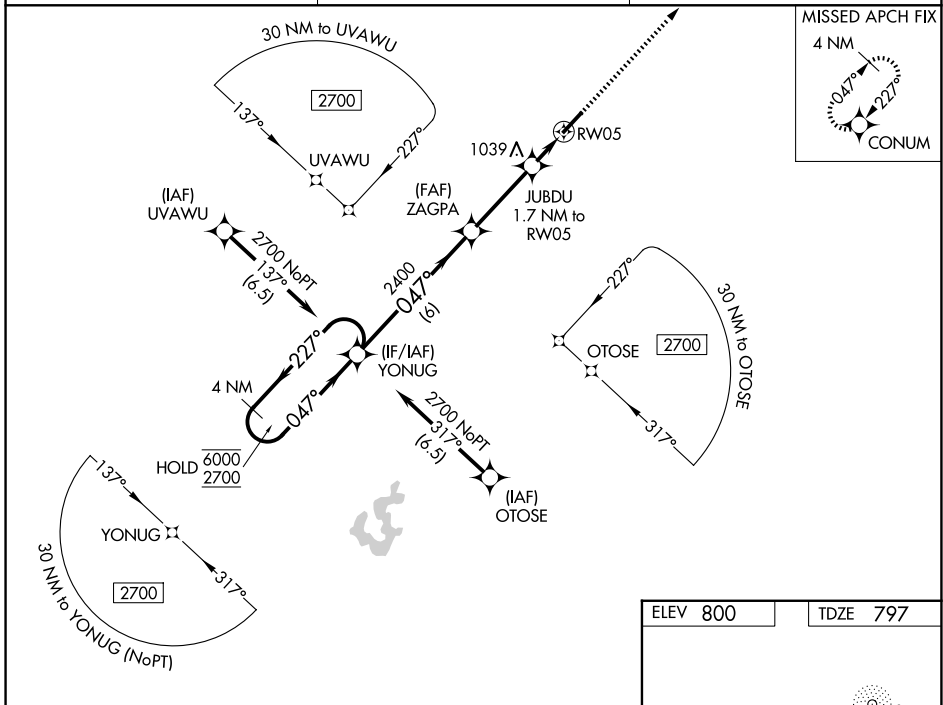
CRAWFORDSVILLE RGNL (CFJ)

RNP APCH - GPS.

**▼** Rwy 5 helicopter visibility reduction below 3/4 SM NA. For uncompensated Baro-VNAV systems, LNAV/VNAV NA below -16°C or above 54°C. Baro-VNAV NA when using GPC altimeter setting. When local altimeter setting not received, use GPC altimeter setting: increase LPV DA to 1128 feet; LNAV/VNAV DA to 1248 feet and all visibilities 1/4 SM; increase all MDAs 60 feet and Circling Cats C and D visibilities 1/4 SM.

**▲** MISSED APPROACH: Climb to 2700 direct CONUM and hold.

AWOS-3PT <b>125.65</b>	INDIANAPOLIS APP CON <b>119.05 317.8</b>	UNICOM <b>122.8 (CTAF) 0</b>
---------------------------	---	---------------------------------



CATEGORY	A	B	C	D
LPV DA		1076-1	279 (300-1)	
LNAV/VNAV DA		1196-1 1/8	399 (400-1 1/8)	
LNAV MDA	1240-1	443 (500-1)	1240-1 3/8	443 (500-1 3/8)
CIRCLING	1240-1 440 (500-1)	1260-1 460 (500-1)	1440-1 3/4 640 (700-1 3/4)	1520-2 1/4 720 (800-2 1/4)

REIL Rwys 5 and 23 0  
MIRL Rwy 5-23 0

EC-2, 11 JUN 2026 to 09 JUL 2026

EC-2, 11 JUN 2026 to 09 JUL 2026