

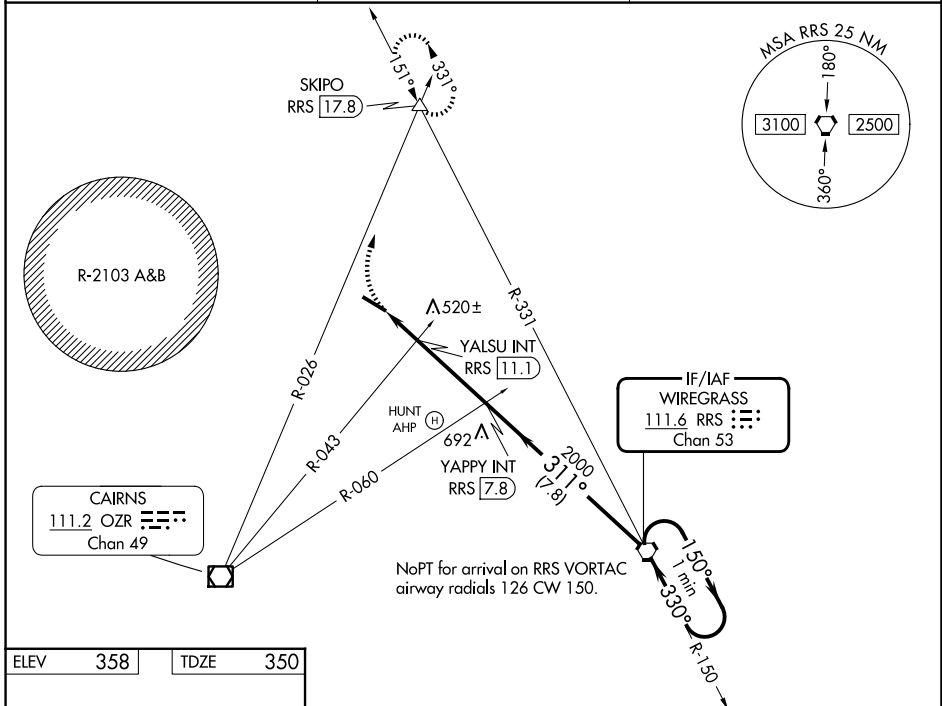
VORTAC RRS 111.6 Chan 53	APP CRS 311°	Rwy Ldg TDZE Apt Elev	5152 350 358
--	------------------------	-----------------------------	---

VOR RWY 31
OZARK/BLACKWELL FLD (71J)

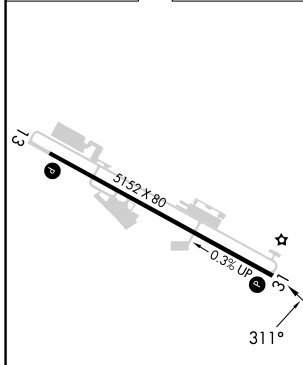
NA Use Dothan altimeter setting; when not received, use Cairns AAF (Fort Rucker) altimeter setting. Procedure NA at night. Rwy 31 helicopter visibility reduction below 1 SM NA.

MISSED APPROACH: Climbing right turn to 2000 on OZR VOR/DME R-026 to SKIPO INT/RRS 17.8 DME and hold.

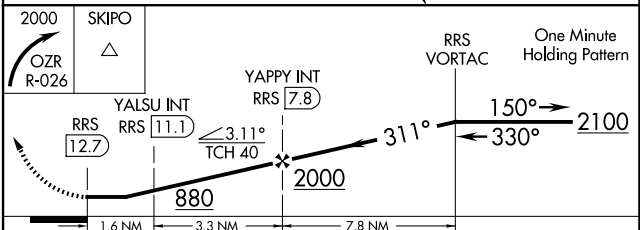
DHN ASOS 135.725	CAIRNS APP CON ★ 125.4 327.125	UNICOM 122.7 (CTAF) 0
----------------------------	--	---------------------------------



ELEV	358	TDZE	350
------	-----	------	-----



REIL Rws 13 and 31	0
MIRL Rwy 13-31	0
FAF to MAP 4.9 NM	
Knots	60 90 120 150 180
Min:Sec	4:54 3:16 2:27 1:58 1:38



CATEGORY	A	B	C	D
S-31	880-1	530 (600-1)	880-1½ 530 (600-1½)	NA
CIRCLING	900-1 542 (600-1)	1100-1¾ 742 (800-1¾)	1100-2¼ 742 (800-2¼)	NA
YALSU FIX MINIMUMS (DUAL VOR RECEIVERS OR DME REQUIRED)				
S-31	820-1	470 (500-1)	820-1¾ 470 (500-1¾)	NA
CIRCLING	900-1 542 (600-1)	1100-1¾ 742 (800-1¾)	1100-2¼ 742 (800-2¼)	NA

SE-4, 11 JUN 2026 to 09 JUL 2026

SE-4, 11 JUN 2026 to 09 JUL 2026