

# RNAV (RNP) Z RWY 23

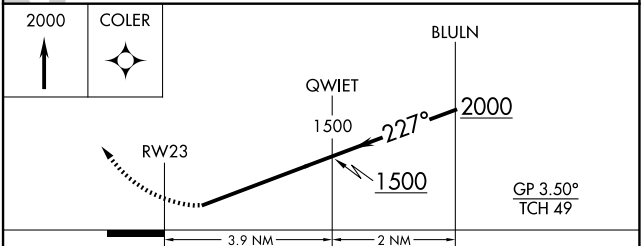
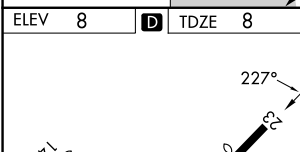
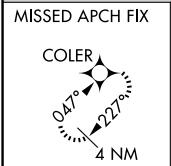
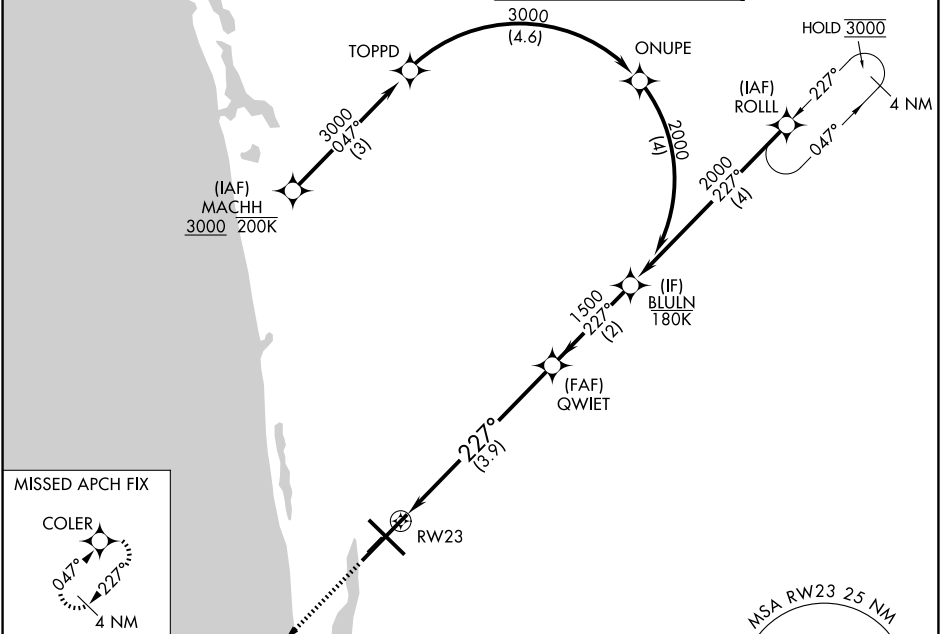
NAPLES MUNI (APF)

APP CRS	Rwy Ldg	<b>5000</b>
<b>227°</b>	TDZE	<b>8</b>
	Apt Elev	<b>8</b>

RNP AR APCH - GPS. Authorization required. From MACHH: RF.  
 For uncompensated Baro-VNAV systems, procedure NA below 6°C or above 48°C.

MISSED APPROACH: Climb to 2000 direct COLER and hold.

ATIS <b>134.225</b>	FORT MYERS APP CON★ <b>119.75 371.85 (W)</b> <b>124.125 371.85 (E)</b>	NAPLES TOWER★ <b>128.5 (CTAF)</b>	GND CON <b>121.6</b>
------------------------	--	--------------------------------------	-------------------------



CATEGORY	A	B	C	D
RNP 0.15 DA		328-1	320 (400-1)	
RNP 0.30 DA		434-1¼	426 (500-1¼)	

MIRL Rwy 5-23 and 14-32  
 REIL Rwy 5, 14, 23 and 32

## AUTHORIZATION REQUIRED

SE-3, 11 JUN 2026 to 09 JUL 2026

SE-3, 11 JUN 2026 to 09 JUL 2026