

APP CRS	Rwy Idg	4687
355°	TDZE	719
	Apt Elev	719

RNAV (GPS) RWY 35

BOYNE MOUNTAIN (BFA)

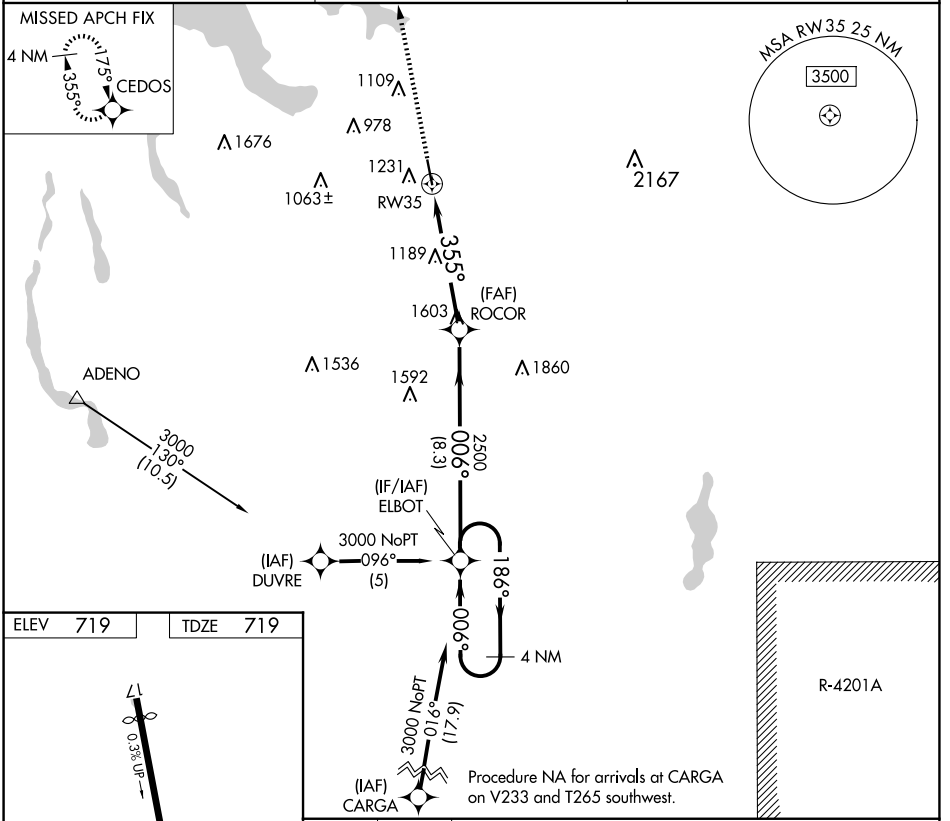
RNP APCH - GPS.

⚠ When local altimeter setting not received, use Bellaire altimeter setting.

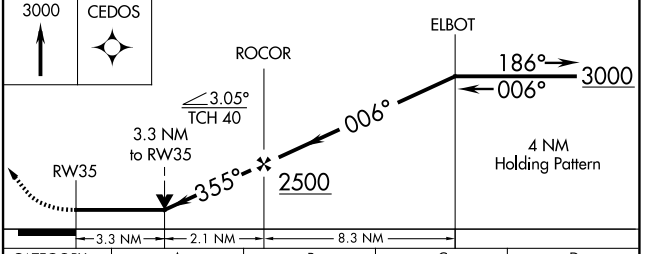
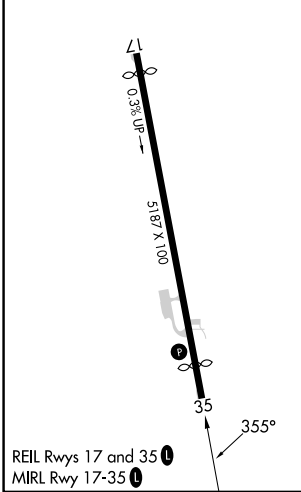
⚠ NA Procedure NA at night. Rwy 35 helicopter visibility reduction below 1 SM NA. VDP NA when using Bellaire altimeter setting.

MISSED APPROACH: Climb to 3000 direct CEDOS and hold.

AWOS-3PT 118.675	MINNEAPOLIS CENTER 134.6 354.05	UNICOM 122.8 (CTAF) 1
----------------------------	---	---------------------------------



ELEV	719	TDZE	719
------	-----	------	-----



CATEGORY	A	B	C	D
LNAV MDA	1840-1¼ 1121 (1200-1¼)	1840-1½ 1121 (1200-1½)	1840-3	1121 (1200-3)

EC-1, 11 JUN 2026 to 09 JUL 2026

EC-1, 11 JUN 2026 to 09 JUL 2026