

VOR/DME CFB 112.2 Chan 59	APP CRS 002°	Rwy Ldg TDZE Apt Elev	N/A N/A 1197
---	------------------------	-----------------------------	---

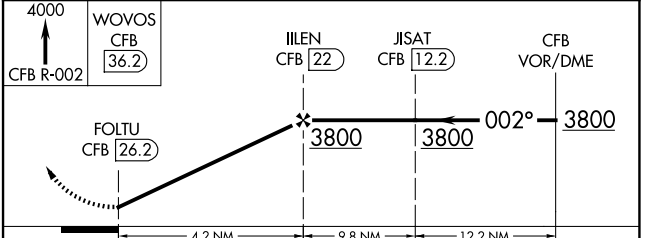
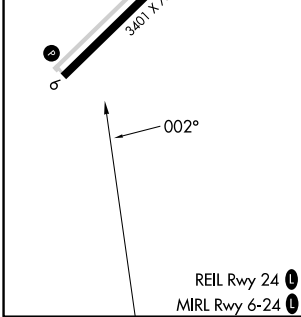
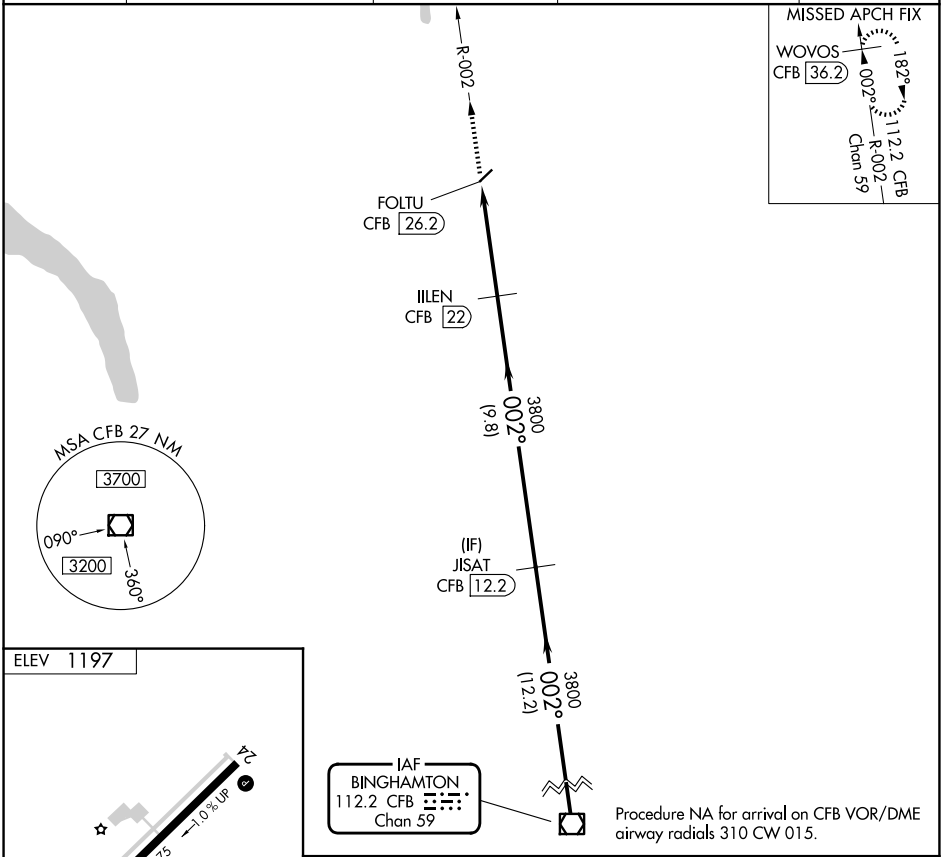
VOR-A

CORTLAND COUNTY/CHASE FLD (N03)

DME required.

MISSED APPROACH: Climb to 4000 on CFB VOR/DME R-002 to WOVOS/36.2 DME and hold.

AWOS-3 132.225	BINGHAMTON APP CON ★ 118.6 257.625 (S-SE)	ELMIRA APP CON ★ 124.3 257.8 (W)	SYRACUSE APP CON 126.125 269.125 (N)	UNICOM 122.8 (CTAF) 0
--------------------------	---	--	--	--



CATEGORY	A	B	C	D
CIRCLING	2380-1¼ 1183 (1200-1¼)	2380-1½ 1183 (1200-1½)	2380-3 1183 (1200-3)	NA

VOR-A

NE-2, 11 JUN 2026 to 09 JUL 2026

NE-2, 11 JUN 2026 to 09 JUL 2026