

WAAS CH 73046 W35A	APP CRS 347°	Rwy Idg TDZE 70 Apt Elev 70	3176
--	------------------------	---	-------------

RNAV (GPS) RWY 35

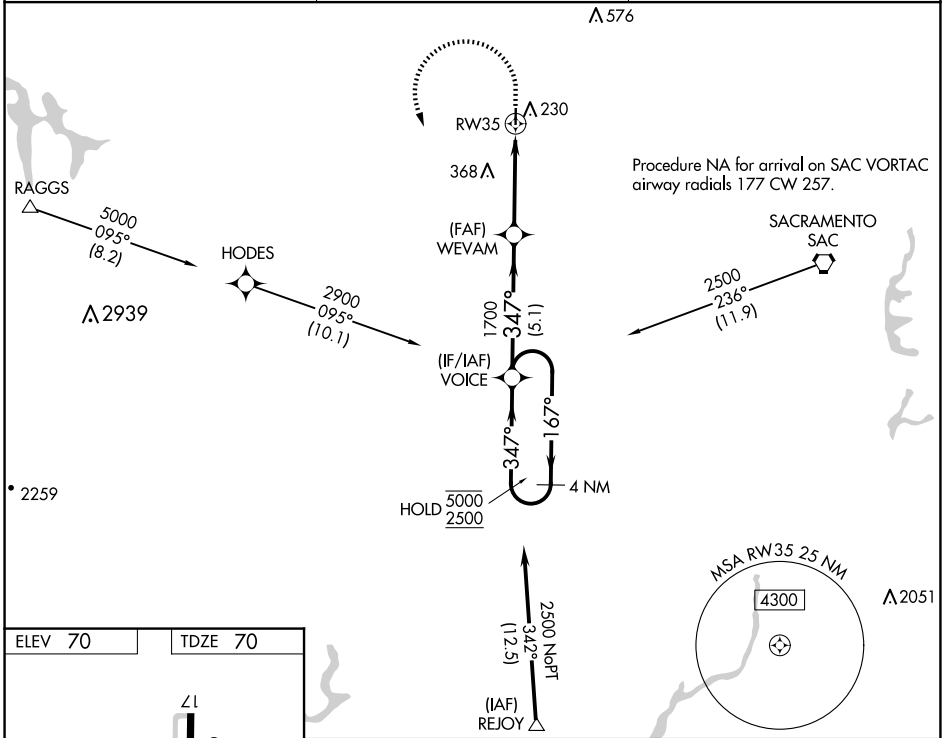
UNIVERSITY (EDU)

RNP APCH - GPS.

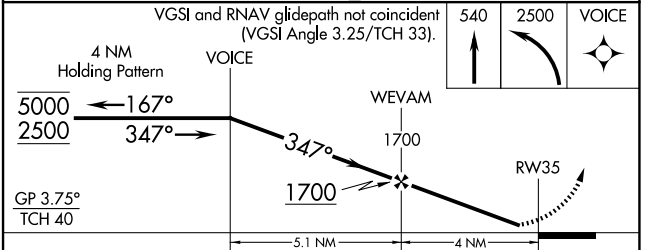
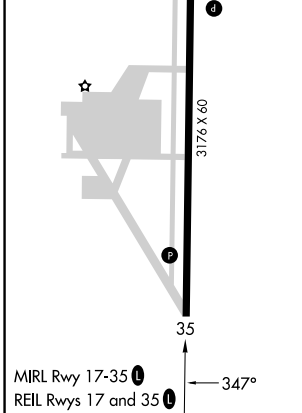
▼ For uncompensated Baro-VNAV systems, LNAV/VNAV NA below -15°C or above 54°C. Procedure NA at night. Rwy 35 helicopter visibility reduction below 1 SM NA.

▲ MISSED APPROACH: Climb to 540, then climbing left turn to 2500 direct VOICE and hold, continue climb-in-hold to 2500.

AWOS-3 119.025	TRAVIS APP CON 126.6 281.45	UNICOM 123.075 (CTAF) 0
--------------------------	---------------------------------------	-----------------------------------



ELEV 70	TDZE 70
---------	---------



CATEGORY	A	B	C	D
LPV DA	355-1	285 (300-1)	NA	
LNAV/VNAV DA	376-1	306 (400-1)	NA	
LNAV MDA	520-1	450 (500-1)	NA	

SW-2, 11 JUN 2026 to 09 JUL 2026

SW-2, 11 JUN 2026 to 09 JUL 2026