

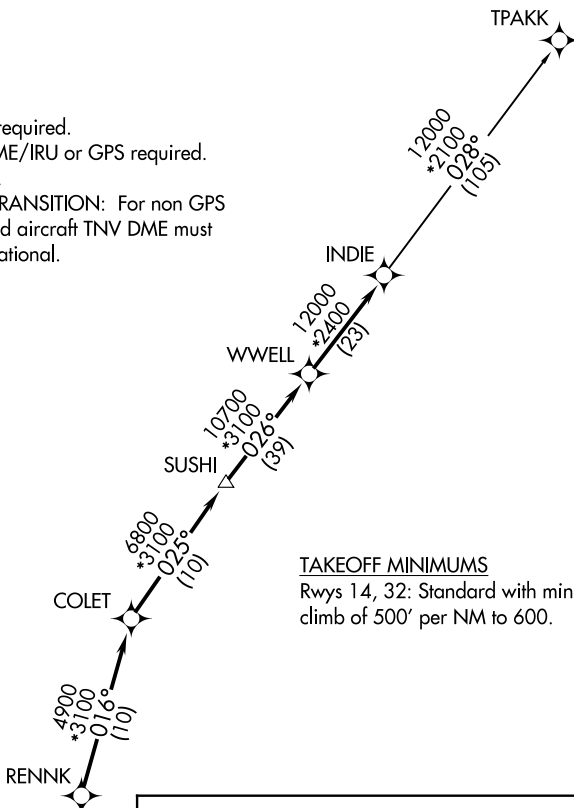
# INDIE EIGHT DEPARTURE (RNAV)

WHARTON, TEXAS

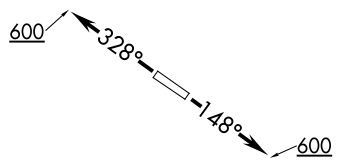
AWOS-3  
118.475  
CTAF  
122.7  
HOUSTON CENTER  
128.6 360.8

**TOP ALTITUDE:  
ASSIGNED BY ATC**

NOTE: RADAR required.  
NOTE: DME/DME/IRU or GPS required.  
NOTE: RNAV 1.  
NOTE: TPAKK TRANSITION: For non GPS equipped aircraft TNV DME must be operational.



TAKEOFF MINIMUMS  
Rwys 14, 32: Standard with minimum climb of 500' per NM to 600.



**▼ DEPARTURE ROUTE DESCRIPTION**

TAKEOFF RUNWAY 14: Climb on heading 148° to 600 for RADAR vectors to RENNK, thence . . . .

TAKEOFF RUNWAY 32: Climb on heading 328° to 600 for RADAR vectors to RENNK, thence . . . .

. . . . on track 016° to COLET, then on track 025° to SUSHI, then on track 026° to WWELL, then on track 026° to INDIE, then on (transition). Maintain ATC assigned altitude. Expect filed altitude 10 minutes after departure.

TPAKK TRANSITION (INDIE8.TPAKK)

NOTE: Chart not to scale.

SC-5, 11 JUN 2026 to 09 JUL 2026

SC-5, 11 JUN 2026 to 09 JUL 2026