

STRYA EIGHT DEPARTURE (RNAV)

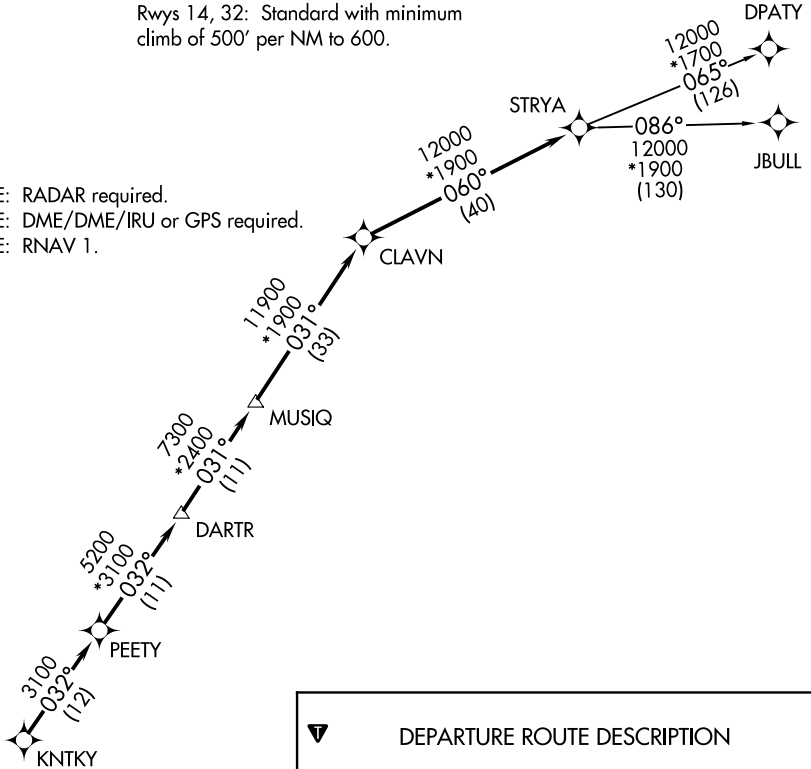
TOP ALTITUDE: ASSIGNED BY ATC

AWOS-3
118.475
CTAF
122.7
HOUSTON CENTER
128.6 360.85

TAKEOFF MINIMUMS

Rwys 14, 32: Standard with minimum climb of 500' per NM to 600.

- NOTE: RADAR required.
- NOTE: DME/DME/IRU or GPS required.
- NOTE: RNAV 1.



DEPARTURE ROUTE DESCRIPTION

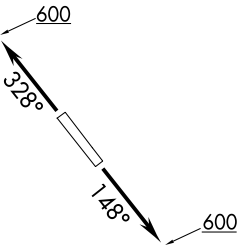
TAKEOFF RUNWAY 14: Climb on heading 148° to 600 for RADAR vectors to KNTKY, thence. . . .

TAKEOFF RUNWAY 32: Climb on heading 328° to 600 for RADAR vectors to KNTKY, thence. . . .

. . . .on track 032° to PEETY, then on track 032° to DARTR, then on track 031° to MUSIQ, then on track 031° to CLAVN, then on track 060° to STRYA, then on (transition). Maintain ATC assigned altitude. Expect filed altitude 10 minutes after departure.

DPATY TRANSITION (STRYA8.DPATY)

JBULL TRANSITION (STRYA8.JBULL)



NOTE: Chart not to scale.

SC-5, 11 JUN 2026 to 09 JUL 2026

SC-5, 11 JUN 2026 to 09 JUL 2026

STRYA EIGHT DEPARTURE (RNAV)