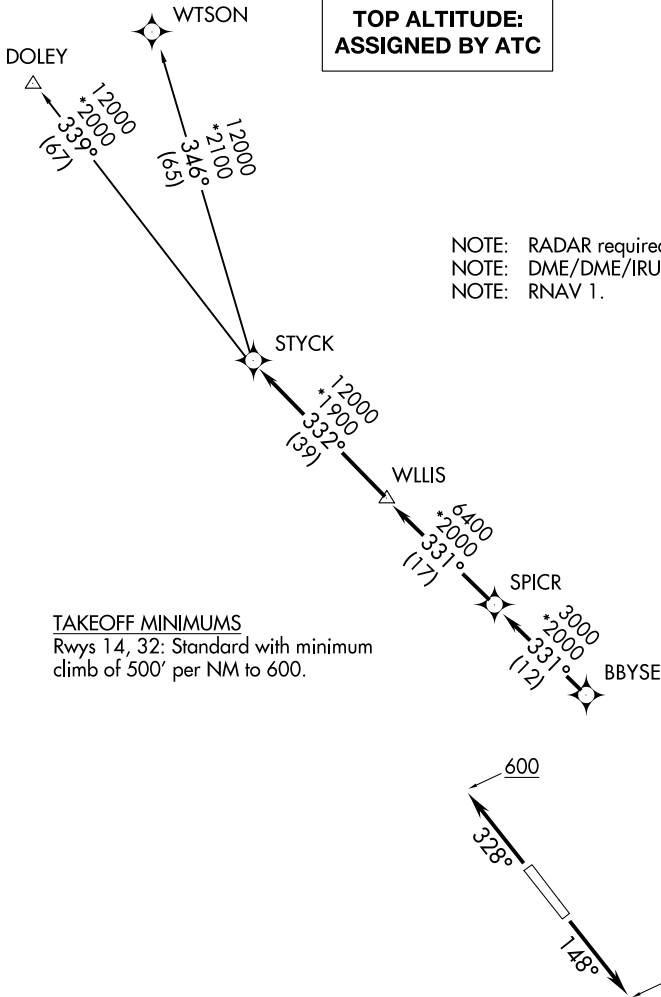


STYCK EIGHT DEPARTURE (RNAV)

WHARTON, TEXAS

AWOS-3
118.475
CTAF
122.7
HOUSTON DEP CON
128.6 360.85

**TOP ALTITUDE:
ASSIGNED BY ATC**



NOTE: RADAR required.
NOTE: DME/DME/IRU or GPS required.
NOTE: RNAV 1.

TAKEOFF MINIMUMS

Rwys 14, 32: Standard with minimum climb of 500' per NM to 600.

NOTE: Chart not to scale.



DEPARTURE ROUTE DESCRIPTION

TAKEOFF RUNWAY 14: Climb on heading 148° to 600 for RADAR vectors to BBYSE, thence. . .
TAKEOFF RUNWAY 32: Climb on heading 328° to 600 for RADAR vectors to BBYSE, thence. . .

. . .on track 331° to SPICR, then on track 331° to WLLIS, then on track 332° to STYCK, then on (transition). Maintain ATC assigned altitude. Expect filed altitude 10 minutes after departure.

DOLEY TRANSITION (STYCK8.DOLEY)
WTSON TRANSITION (STYCK8.WTSON)

STYCK EIGHT DEPARTURE (RNAV)

(STYCK8.STYCK) 07OCT21

WHARTON, TEXAS

WHARTON RGNL(A.R.M)

SC-5, 11 JUN 2026 to 09 JUL 2026

SC-5, 11 JUN 2026 to 09 JUL 2026