

APP CRS 290°	Rwy Ldg 3999
	TDZE 660
	Apt Elev 660

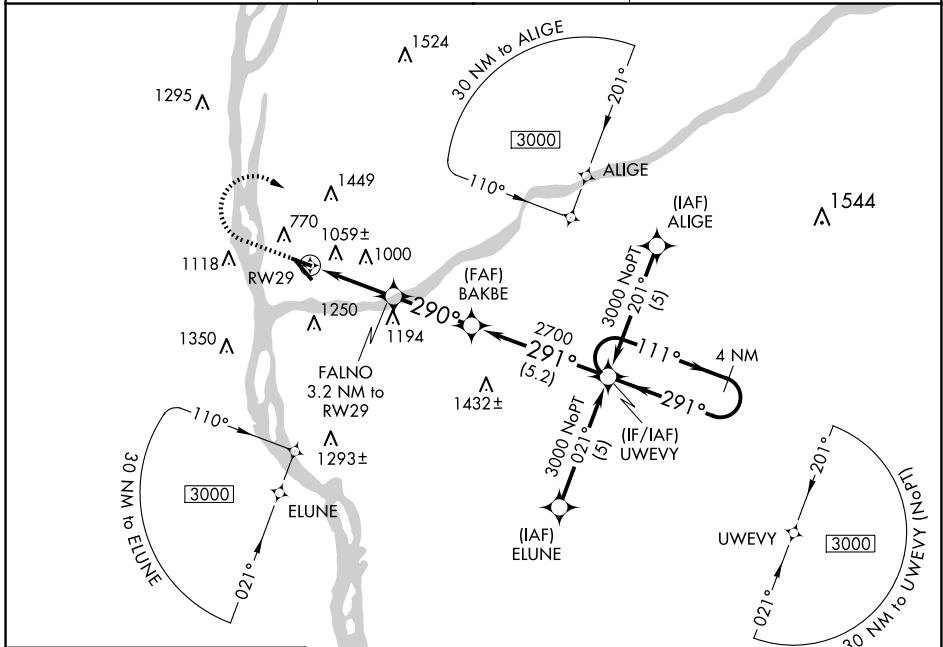
RNAV (GPS) RWY 29

PRAIRIE DU CHIEN MUNI (PDC)

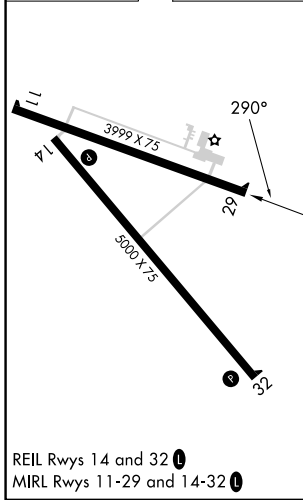
▽ DME/DME RNP-0.3 NA.
▲ Night landing: Rwy 11, 32 NA.
 Helicopter visibility reduction below 3/4 SM NA.

MISSED APPROACH: Climb to 2000 then climbing right turn to 3000 direct UWEVY and hold.

AWOS-3 119.925	CHICAGO CENTER 133.95 281.4	UNICOM 122.8(CTAF) 0
--------------------------	---------------------------------------	--------------------------------



ELEV 660	TDZE 660
----------	----------



	2000	3000	UWEVY	
	↑	↷	✧	
	FALNO 3.2 NM to RW29		UWEVY 4 NM Holding Pattern	
	2.5 NM to RW29	≤ 3.06° TCH 40	291°	111° → 3000
	1740	2700	291°	
	2.5 NM	0.7 NM	3 NM	5.2 NM
CATEGORY	A	B	C	D
LNAV MDA	1520-1 860 (900-1)	1520-1¼ 860 (900-1¼)	1520-2½	860 (900-2½)
CIRCLING	1580-1¼ 920 (1000-1¼)	1760-1½ 1100 (1100-1½)	1800-3	1140 (1200-3)

EC-3, 11 JUN 2026 to 09 JUL 2026

EC-3, 11 JUN 2026 to 09 JUL 2026