

**BOTCH TWO DEPARTURE (RNAV) Departure Routes**

DALLAS-FORT WORTH, TEXAS

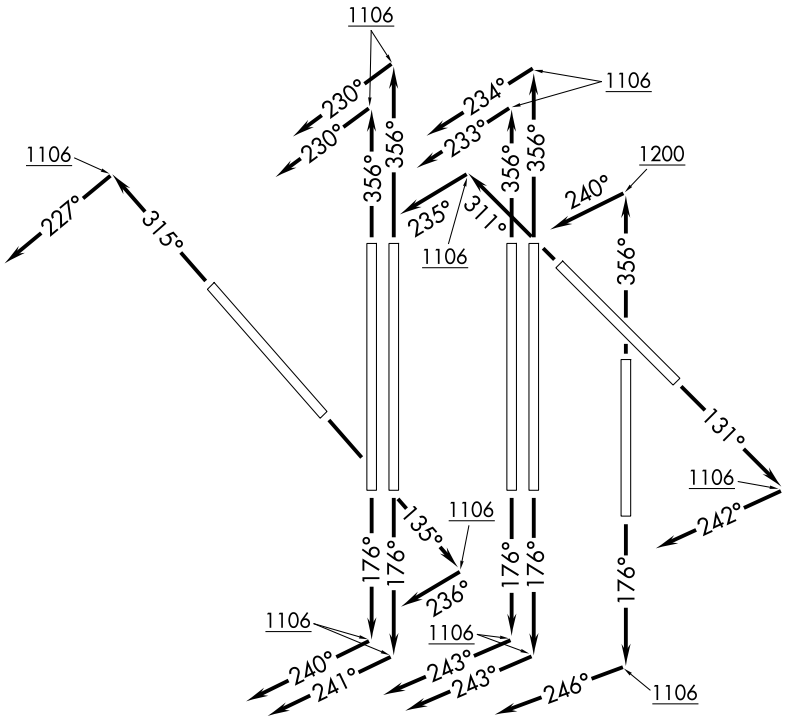
LONE STAR DEP CON  
 135.975 379.9  
 (13L/R, 17L/C/R, 18L/R)  
 118.1 306.95  
 (31L/R, 35L/C/R, 36L/R)  
 D-ATIS DEP  
 135.925  
 CLNC DEL  
 128.25  
 CPDLC  
 GND CON  
 121.65 121.8 (E)  
 121.85 (W)  
 DFW TOWER  
 126.55 127.5 (E)  
 124.15 134.9 (W)

RNAV 1 - DME/DME/IRU or GPS required.  
 RADAR required.

**TOP ALTITUDE:  
 ASSIGNED BY ATC**

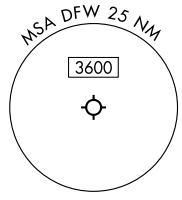
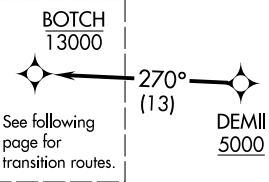
TAKEOFF MINIMUMS

Rwys 13L/R, 17L/C/R, 18L/R, 31L/R, 35L/C, 36L/R: Standard.  
 Rwy 35R: Standard with minimum climb of 245'/NM to 1200.



SC-2, 11 JUN 2026 to 09 JUL 2026

SC-2, 11 JUN 2026 to 09 JUL 2026



NOTE: ALIEN Transition: ATC assigned only.  
 NOTE: Props only.

(CONTINUED ON FOLLOWING PAGE)

NOTE: Chart not to scale.

**BOTCH TWO DEPARTURE (RNAV) Departure Routes**

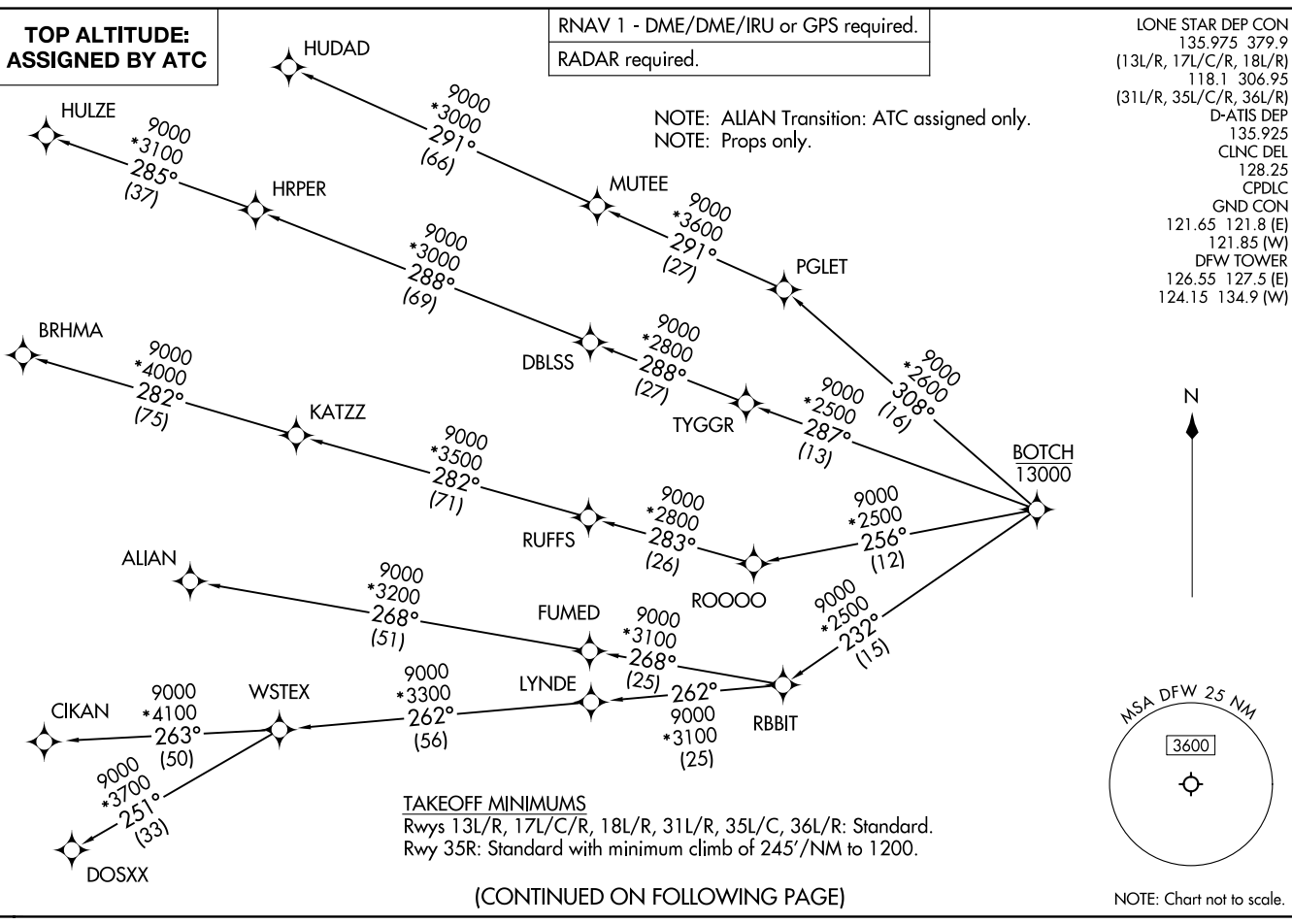
DALLAS-FORT WORTH, TEXAS

LONE STAR DEP CON  
 135.975 379.9  
 (13L/R, 17L/C/R, 18L/R)  
 118.1 306.95  
 (31L/R, 35L/C/R, 36L/R)  
 D-ATIS DEP  
 135.925  
 CLNC DEL  
 128.25  
 CPDLC  
 GND CON  
 121.65 121.8 (E)  
 121.85 (W)  
 DFW TOWER  
 126.55 127.5 (E)  
 124.15 134.9 (W)

RNAV 1 - DME/DME/IRU or GPS required.  
 RADAR required.

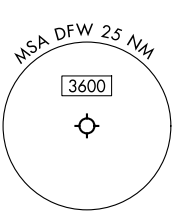
**TOP ALTITUDE:  
 ASSIGNED BY ATC**

NOTE: ALIAN Transition: ATC assigned only.  
 NOTE: Props only.



**TAKEOFF MINIMUMS**  
 Rwy 13L/R, 17L/C/R, 18L/R, 31L/R, 35L/C, 36L/R: Standard.  
 Rwy 35R: Standard with minimum climb of 245'/NM to 1200.

(CONTINUED ON FOLLOWING PAGE)



NOTE: Chart not to scale.

TOP ALTITUDE: ASSIGNED BY ATC  
 BOTCH TWO DEPARTURE (RNAV) Transition Routes  
 (BOTCH2.BOTCH) 14MAY26  
 DALLAS-FORT WORTH, TEXAS  
 DALLAS-FORT WORTH INTL (DFW)

(BOTCH2.BOTCH) 26134  
 AL-6039 (FAA)  
 DALLAS-FORT WORTH INTL (DFW)  
 DALLAS-FORT WORTH, TEXAS

# BOTCH TWO DEPARTURE (RNAV)



## DEPARTURE ROUTE DESCRIPTION

- TAKEOFF RUNWAY 13L: Climb on heading 131° to 1106, then on heading 242° or as assigned by ATC, for vectors to cross DEMII at or above 5000, thence. . .
- TAKEOFF RUNWAY 13R: Climb on heading 135° to 1106, then on heading 236° or as assigned by ATC, for vectors to cross DEMII at or above 5000, thence. . .
- TAKEOFF RUNWAY 17L: Climb on heading 176° to 1106, then on heading 246° or as assigned by ATC, for vectors to cross DEMII at or above 5000, thence. . .
- TAKEOFF RUNWAYS 17C/R: Climb on heading 176° to 1106, then on heading 243° or as assigned by ATC, for vectors to cross DEMII at or above 5000, thence. . .
- TAKEOFF RUNWAY 18L: Climb on heading 176° to 1106, then on heading 241° or as assigned by ATC, for vectors to cross DEMII at or above 5000, thence. . .
- TAKEOFF RUNWAY 18R: Climb on heading 176° to 1106, then on heading 240° or as assigned by ATC, for vectors to cross DEMII at or above 5000, thence. . .
- TAKEOFF RUNWAY 31L: Climb on heading 315° to 1106, then on heading 227° or as assigned by ATC, for vectors to cross DEMII at or above 5000, thence. . .
- TAKEOFF RUNWAY 31R: Climb on heading 311° to 1106, then on heading 235° or as assigned by ATC, for vectors to cross DEMII at or above 5000, thence. . .
- TAKEOFF RUNWAY 35L: Climb on heading 356° to 1106, then on heading 233° or as assigned by ATC, for vectors to cross DEMII at or above 5000, thence. . .
- TAKEOFF RUNWAY 35C: Climb on heading 356° to 1106, then on heading 234° or as assigned by ATC, for vectors to cross DEMII at or above 5000, thence. . .
- TAKEOFF RUNWAY 35R: Climb on heading 356° to 1200, then on heading 240° or as assigned by ATC, for vectors to cross DEMII at or above 5000, thence. . .
- TAKEOFF RUNWAYS 36L/R: Climb on heading 356° to 1106, then on heading 230° or as assigned by ATC, for vectors to cross DEMII at or above 5000, thence. . .

. . . on track 270° to cross BOTCH at or below 13000, then on (transition). Maintain ATC assigned altitude, expect filed altitude 10 minutes after departure.

- ALIAN TRANSITION (BOTCH2.ALIAN)
- BRHMA TRANSITION (BOTCH2.BRHMA)
- CIKAN TRANSITION (BOTCH2.CIKAN)
- DOSXX TRANSITION (BOTCH2.DOSXX)
- HUDAD TRANSITION (BOTCH2.HUDAD)
- HULZE TRANSITION (BOTCH2.HULZE)
- WSTEX TRANSITION (BOTCH2.WSTEX)

SC-2, 11 JUN 2026 to 09 JUL 2026

SC-2, 11 JUN 2026 to 09 JUL 2026

# BOTCH TWO DEPARTURE (RNAV)