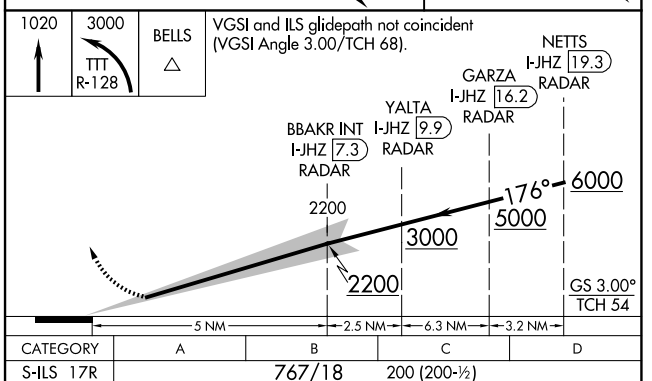
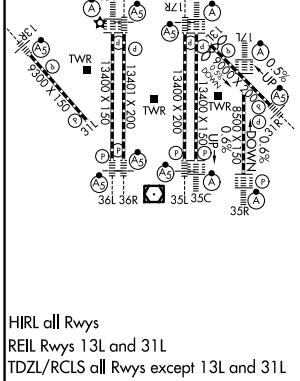
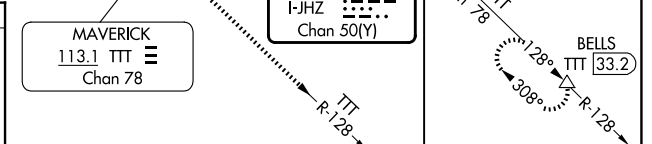
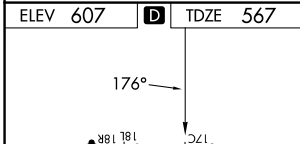
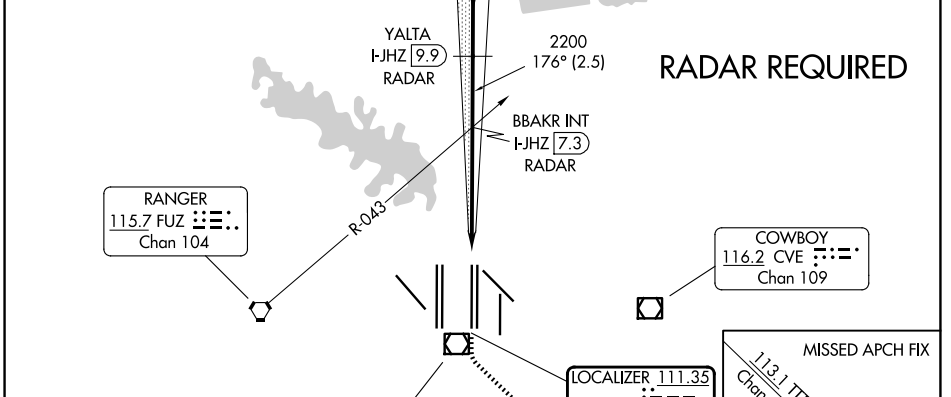
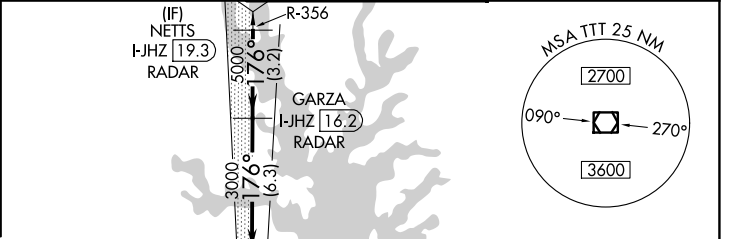
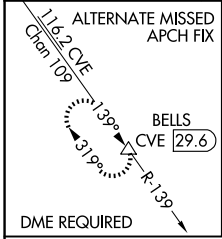


LOC/DME I-JHZ 111.35 Chan 50 (Y)	APP CRS 176°	Rwy Ldg 13400 TDZE 567 Apt Elev 607
---	------------------------	--

CONVERGING ILS RWY 17R

DALLAS-FORT WORTH INTL (DFW)

▼ DME or RADAR required. Simultaneous approach authorized with Converging ILS Rwy 13R.	MALSR 	MISSED APPROACH: Climb to 1020 then climbing left turn to 3000 on TTT VOR/DME R-128 to BELLS INT/TTT 33.2 DME and hold.	
D-ATIS 123.775	LONE STAR APP CON 127.075	DFW TOWER 126.55 127.5 (E) 124.15 134.9 (W)	GND CON 121.65 121.8 (E) 121.85 (W)



CATEGORY	A	B	C	D
S-ILS 17R	767/18		200 (200-1/2)	

SC-2, 11 JUN 2026 to 09 JUL 2026

SC-2, 11 JUN 2026 to 09 JUL 2026