

LOC/DME I-PKQ 110.3 Chan 40	APP CRS 356°	Rwy Ldg TDZE Apt Elev	13400 563 607
--	------------------------	-----------------------------	--

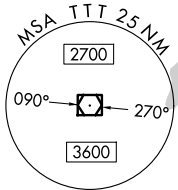
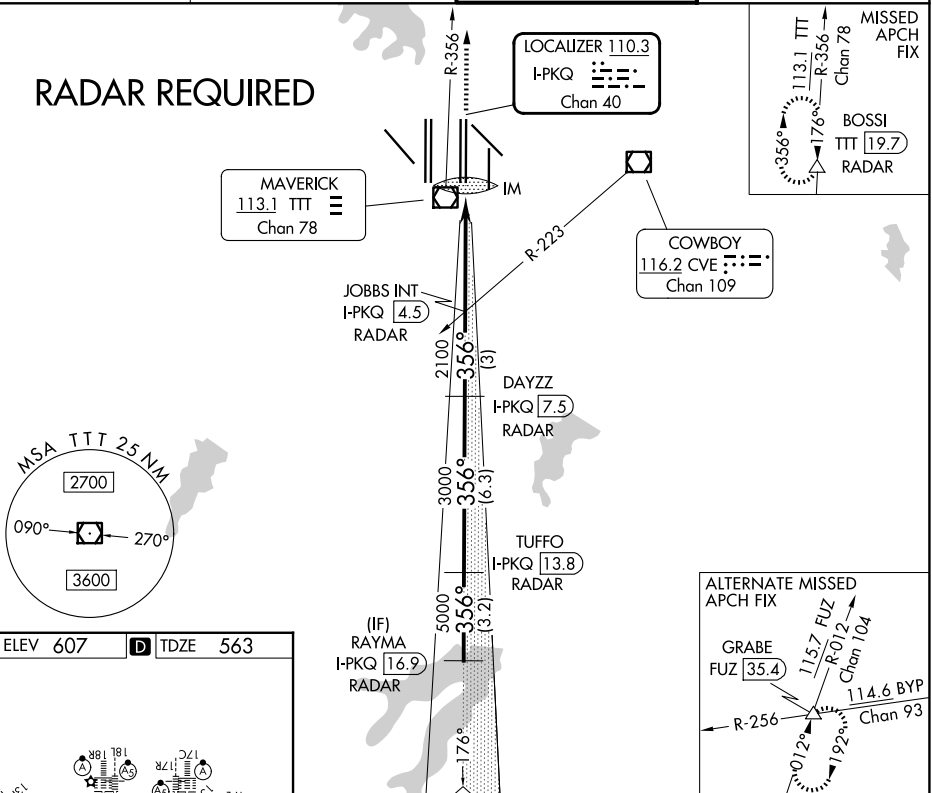
CONVERGING ILS RWY 35C

DALLAS-FORT WORTH INTL (DFW)

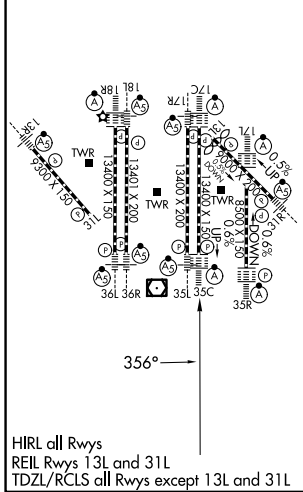
DME or RADAR required. Simultaneous approach authorized with Converging ILS Rwy 31R.	ALSF-2 	MISSED APPROACH: Climb to 3000 on TTT VOR/DME R-356 to BOSSI/TTT 19.7 DME/RADAR and hold.

D-ATIS 123.775	LONE STAR APP CON 127.075	DFW TOWER 126.55 127.5 (E) 124.15 134.9 (W)	GND CON 121.65 121.8 (E) 121.85 (W)
--------------------------	-------------------------------------	---	---

RADAR REQUIRED



ELEV 607	TDZE 563
----------	----------



3000	BOSSI	VGSi and ILS glidepath not coincident (VGSi Angle 3.00/TCH 76).			
TTT R-356		JOBBS I-PKQ 4.5	DAYZZ I-PKQ 7.5	TUFFO I-PKQ 13.8	RAYMA I-PKQ 16.9
		RADAR	RADAR	RADAR	RADAR
		2100	3000	5000	6000
		663	2100	3000	5000
		0.1	4.5 NM	3 NM	6.3 NM
					3.2 NM
					GS 3.00° TCH 59
CATEGORY	A	B	C	D	
S-ILS 35C	763/18				200 (200-1/2)

SC-2, 11 JUN 2026 to 09 JUL 2026

SC-2, 11 JUN 2026 to 09 JUL 2026