

GARLAND SIX DEPARTURE  
 (GARL6.TT) 17AR25  
 DALLAS-FORT WORTH INTL (DFW)  
 DALLAS-FORT WORTH, TEXAS

LONE STAR DEP CON  
 118.55 290.35  
 D-ATIS DEP  
 135.925  
 CLNC DEL  
 128.25  
 CPDLC  
 GND CON  
 121.65 121.8 (EAST)  
 121.85 (WEST)  
 DFW TOWER  
 126.55 127.5 (EAST)  
 124.15 134.9 (WEST)

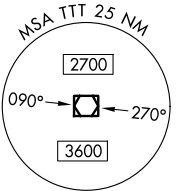
**TOP ALTITUDE:**  
**RWYS 13L/R, 17L/C/R, 18L/R,**  
**35L/C/R, 36L/R: 10000**  
**RWYS 31L/R: 5000**

RADAR and DME required.

(GARL6.TT) 25107  
 GARLAND SIX DEPARTURE  
 AL-6039 (FAA)  
 DALLAS-FORT WORTH INTL (DFW)  
 DALLAS-FORT WORTH, TEXAS

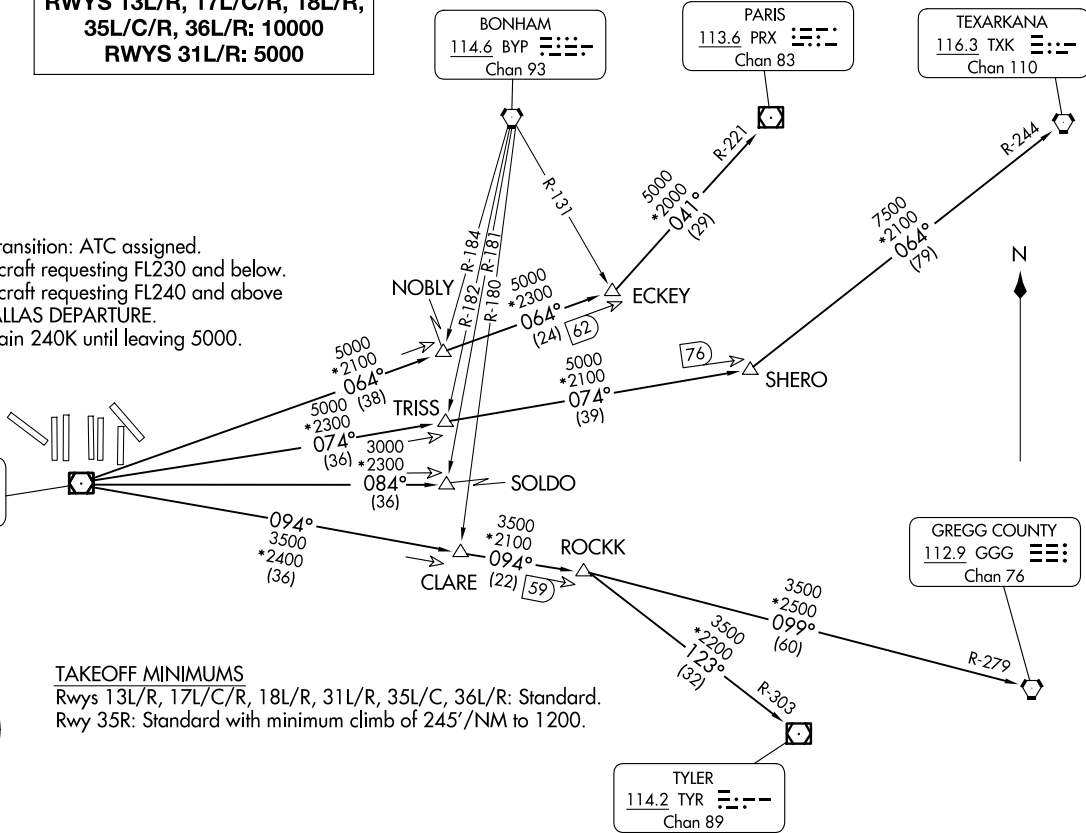
NOTE: SOLDO Transition: ATC assigned.  
 NOTE: For all aircraft requesting FL230 and below.  
 NOTE: For all aircraft requesting FL240 and above  
 expect DALLAS DEPARTURE.  
 NOTE: Jets maintain 240K until leaving 5000.

**MAVERICK**  
 113.1 TTT  
 Chan 78



NOTE: Chart not to scale.

**TAKEOFF MINIMUMS**  
 Rwys 13L/R, 17L/C/R, 18L/R, 31L/R, 35L/C, 36L/R: Standard.  
 Rwy 35R: Standard with minimum climb of 245'/NM to 1200.



(CONTINUED ON FOLLOWING PAGE)

# GARLAND SIX DEPARTURE



## DEPARTURE ROUTE DESCRIPTION

TAKEOFF RUNWAYS 31L/R: Climb on assigned heading, maintain 5000, thence. . .

TAKEOFF RUNWAYS 13L/R, 17L/C/R, 18L/R, 35L/C/R, 36L/R: Climb on assigned heading, maintain 10000, thence. . .

. . .for RADAR vectors to appropriate route and expect filed altitude 10 minutes after departure.

GREGG COUNTY TRANSITION (GARL6.GGG): From over TTT VOR/DME on TTT R-094 to ROCKK, then on GGG R-279 to GGG VORTAC.

PARIS TRANSITION (GARL6.PRX): From over TTT VOR/DME on TTT R-064 to ECKEY, then on PRX R-221 to PRX VOR/DME.

SOLDO TRANSITION (GARL6.SOLDO): From over TTT VOR/DME on TTT R-084 to SOLDO.

TEXARKANA TRANSITION (GARL6.TXK): From over TTT VOR/DME on TTT R-074 to SHERO, then on TXK R-244 to TXK VORTAC.

TYLER TRANSITION (GARL6.TYR): From over TTT VOR/DME on TTT R-094 to ROCKK, then on TYR R-303 to TYR VOR/DME.

SC-2, 11 JUN 2026 to 09 JUL 2026

SC-2, 11 JUN 2026 to 09 JUL 2026