

LOC/DME I-PPZ <b>111.75</b> Chan <b>54</b> (Y)	APP CRS <b>176°</b>	Rwy Ldg TDZE Apt Elev	<b>8500</b> <b>545</b> <b>607</b>
--	------------------------	-----------------------------	---

# ILS RWY 17L (CAT II & III)

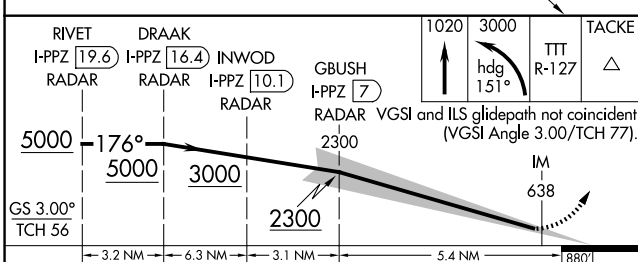
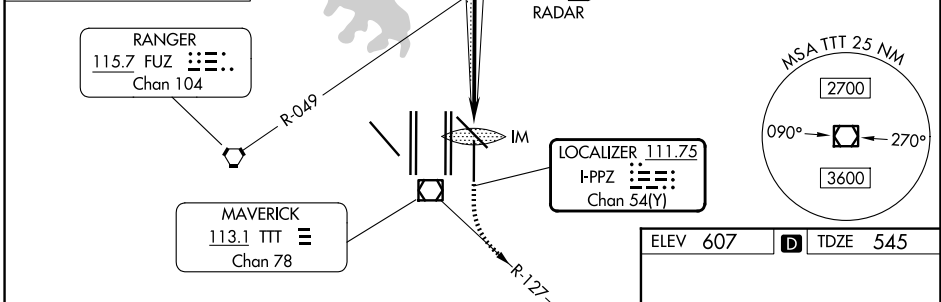
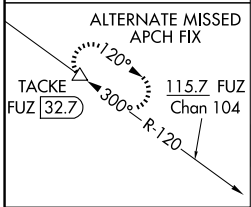
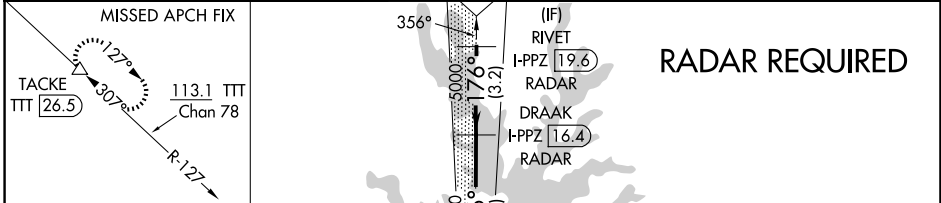
DALLAS-FORT WORTH INTL (DFW)

Simultaneous approach authorized with Rwy 17C/R and Rwy 18L/R. DME required.

ALSF-2

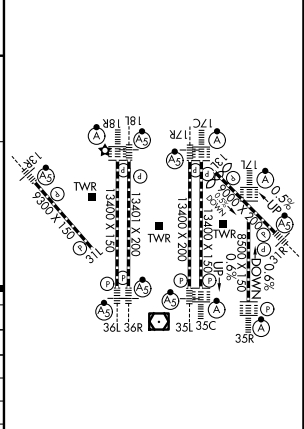
MISSED APPROACH: Climb to 1020 then climbing left turn to 3000 on heading 151° and TTT VOR/DME R-127 to TACKE/TTT 26.5 DME and hold.

D-ATIS <b>123.775</b>	LONE STAR APP CON <b>119.4</b>	DFW TOWER <b>126.55</b> <b>127.5</b> (E) <b>124.15</b> <b>134.9</b> (W)	GND CON <b>121.65</b> <b>121.8</b> (E) <b>121.85</b> (W)
--------------------------	-----------------------------------	---	--



CATEGORY	A	B	C	D
S-ILS 17L	CAT II RA 122/12 100 DA 645			
S-ILS 17L	CAT IIIa RVR 07			
S-ILS 17L	CAT IIIb RVR 06			
S-ILS 17L	CAT IIIc NA			

ELEV 607	TDZE 545
----------	----------



## CATEGORY II & III ILS - SPECIAL AIRCREW & AIRCRAFT CERTIFICATION REQUIRED

HIRL all Rwys  
REL Rwys 13L and 31L  
TDZL/RCLS all Rwys except 13L and 31L

SC-2, 11 JUN 2026 to 09 JUL 2026

SC-2, 11 JUN 2026 to 09 JUL 2026