

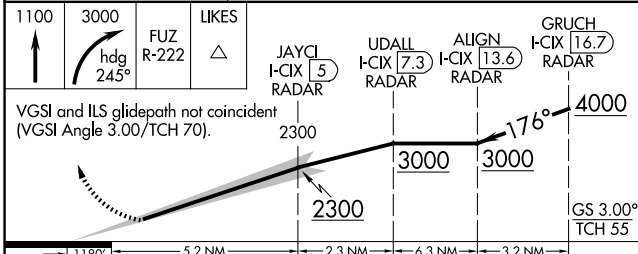
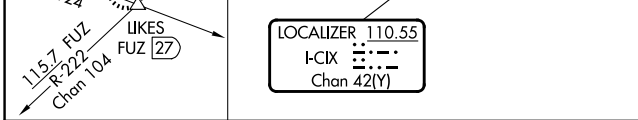
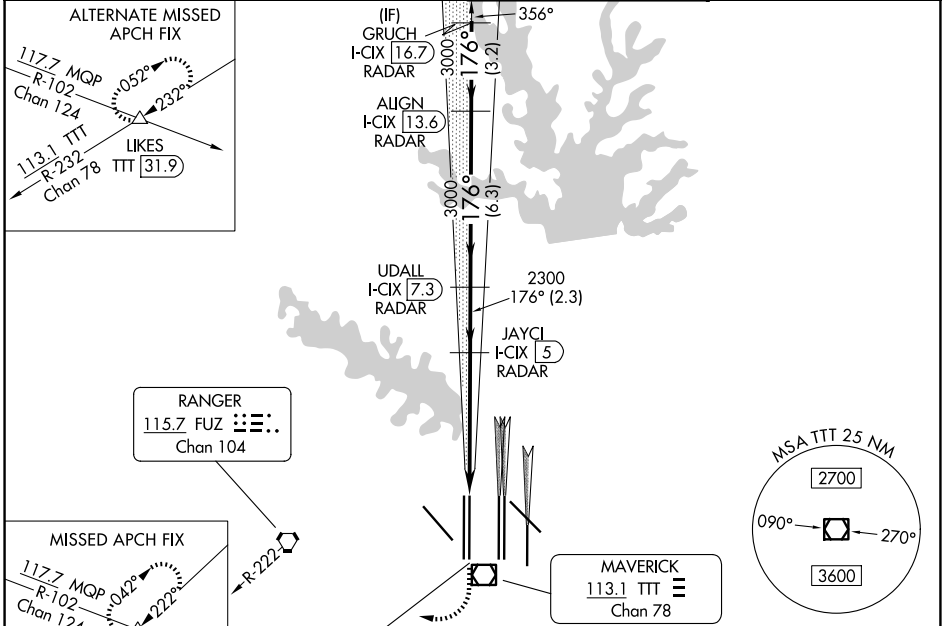
LOC/DME I-CIX 110.55 Chan 42(Y)	APP CRS 176°	Rwy Ldg TDZE Apt Elev 13401 602 606
--	------------------------	---

ILS RWY 18L (SA CAT I & II)

DALLAS-FORT WORTH INTL (DFW)

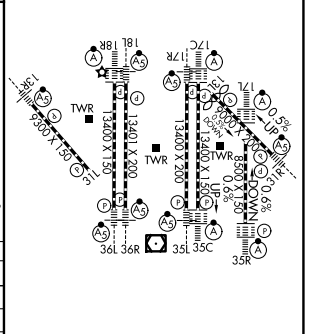
RADAR required for procedure entry. DME or RADAR required.		MALSR 	MISSED APPROACH: Climb to 1100, then climbing right turn to 3000 on heading 245° and FUZ VORTAC R-222 to LIKES INT/FUZ 27 DME and hold.
--	--	-----------	---

D-ATIS 123.775	LONE STAR APP CON 118.425	DFW TOWER 126.55 127.5 (E) 124.15 134.9 (W)	GND CON 121.65 121.8 (E) 121.85 (W)
--------------------------	-------------------------------------	---	--



1100	3000	FUZ R-222	LIKES
↑	hdg 245°		△
JAYCI I-CIX 5.0 RADAR	UDALL I-CIX 7.3 RADAR	ALIGN I-CIX 13.6 RADAR	GRUCH I-CIX 16.7 RADAR

ELEV 606	TDZE 602
----------	----------



SA CATEGORY I & II ILS - SPECIAL AIRCREW & AIRCRAFT CERTIFICATION REQUIRED

HIRL all Rwys
REIL Rws 13L and 31L
TDZL/RCLS all Rws except 13L and 31L

SC-2, 11 JUN 2026 to 09 JUL 2026

SC-2, 11 JUN 2026 to 09 JUL 2026