

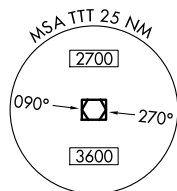
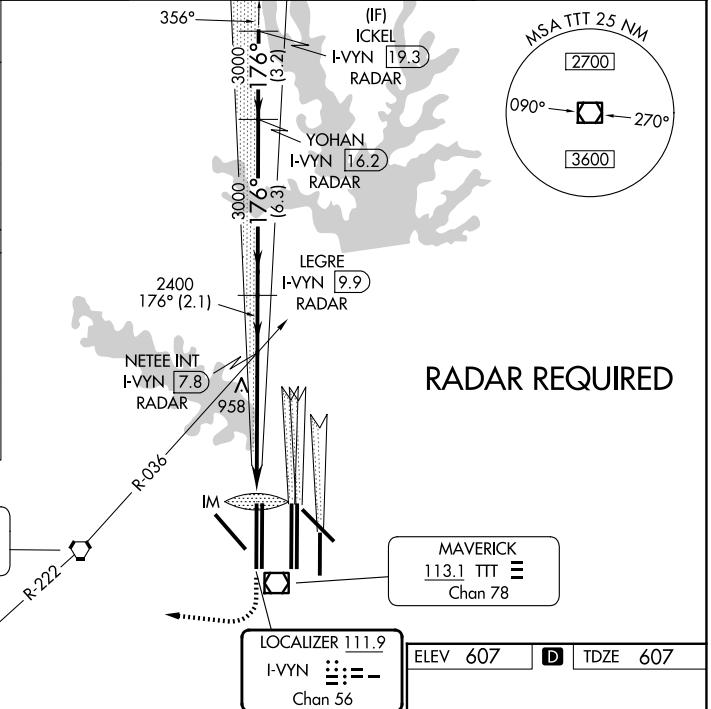
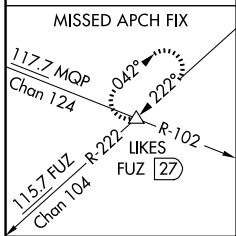
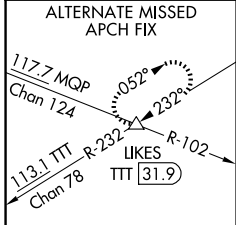
LOC/DME I-VYIN 111.9 Chan 56	APP CRS 176°	Rwy Ldg TDZE Apt Elev	13400 607 607
--	------------------------	-----------------------------	--

ILS RWY 18R (CAT II & III)

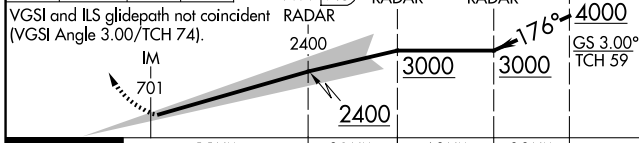
DALLAS-FORT WORTH INTL (DFW)

⚠ DME or RADAR required. Simultaneous approach authorized with Rwy 17 L/C/R. **ALSF-2** MISSED APPROACH: Climb to 1100 then climbing right turn to 3000 on heading 250° and FUZ VORTAC R-222 to LIKES INT/FUZ VORTAC 27 DME and hold.

D-ATIS 123.775	LONE STAR APP CON 118.425	DFW TOWER 126.55 127.5 (E) 124.15 134.9 (W)	GND CON 121.65 121.8 (E) 121.85 (W)
--------------------------	-------------------------------------	---	---

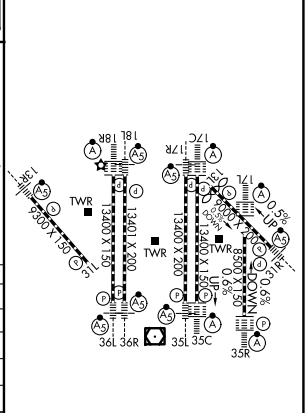


1100	3000	FUZ R-222	LIKES	ICKEL I-VYIN [19.3] RADAR
↑	hdg 250°		△	NETEE INT I-VYIN [7.8] RADAR
				LEGRE I-VYIN [9.9] RADAR
				YOHAN I-VYIN [16.2] RADAR



	1160°	5.5 NM	2.1 NM	6.3 NM	3.2 NM
CATEGORY	A	B	C	D	
S-ILS 18R		CAT II RA 106/12 100 DA 707			
S-ILS 18R		CAT IIIa RVR 07			
S-ILS 18R		CAT IIIb RVR 06			
S-ILS 18R		CAT IIIc NA			

ELEV 607	D	TDZE 607
----------	----------	----------



CATEGORY II & III ILS - SPECIAL AIRCREW & AIRCRAFT CERTIFICATION REQUIRED

HIRL all Rwys
REIL Rwy 13L and 31L
TDZL/RCLS all Rwy's except 13L and 31L

SC-2, 11 JUN 2026 to 09 JUL 2026

SC-2, 11 JUN 2026 to 09 JUL 2026