

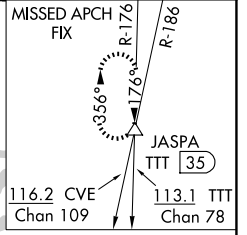
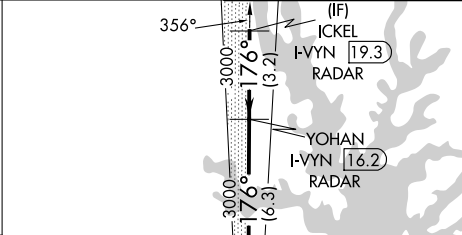
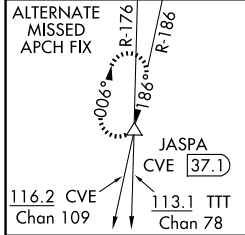
LOC/DME I-VYV 111.9 Chan 56	APP CRS 176°	Rwy Ldg 13400 TDZE 607 Apt Elev 607
--	------------------------	--

ILS RWY 18R (CONVERGING)

DALLAS-FORT WORTH INTL (DFW)

DME and RADAR required.	ALSF-2	MISSED APPROACH: Climb to 3000 then climb to 4000 on heading 170° and TTT VOR/DME R-176 to JASPA/TTT 35 DME and hold.
Simultaneous approach authorized with CONVERGING ILS RWY 13R, CONVERGING ILS RWY 17C, and CONVERGING ILS 17R.		

D-ATIS 123.775	LONE STAR APP CON 118.425	DFW TOWER 126.55 127.5 (E) 124.15 134.9 (W)	GND CON 121.65 121.8 (E) 121.85 (W)
--------------------------	-------------------------------------	---	---



RANGER
115.7 FUZ [:::..]
Chan 104

LOCALIZER 111.9
I-VYV [:::-]
Chan 56

MAVERICK
113.1 TTT [:::]
Chan 78

MSA TTT 25 NM

090° ← [] → 270°

[2700]

[3600]

SC-2, 11 JUN 2026 to 09 JUL 2026

SC-2, 11 JUN 2026 to 09 JUL 2026

ELEV 607	D	TDZE 607
----------	----------	----------

