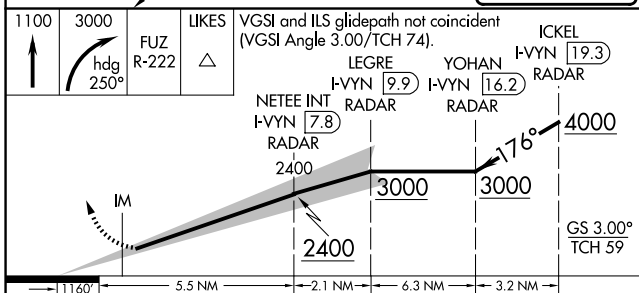
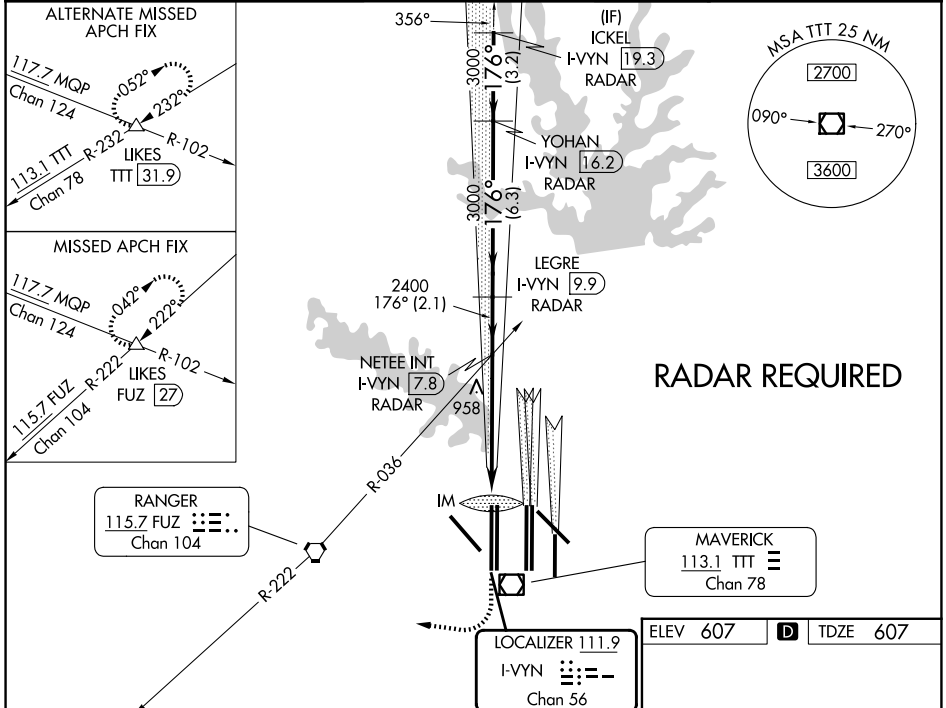


LOC/DME I-VYV 111.9 Chan 56	APP CRS 176°	Rwy Ldg TDZE Apt Elev	13400 607 607
---	------------------------	-----------------------------	--

ILS RWY 18R (SA CAT I)

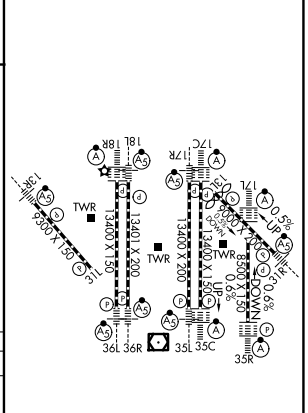
DALLAS-FORT WORTH INTL (DFW)

<p>DME or RADAR required. Simultaneous approach authorized with Rwy 17 L/C/R. Requires specific OPSPEC, MSPEC, or LOA approval and use of HUD to DH.</p>	Rwy 18R ALS-F2 	MISSED APPROACH: Climb to 1100 then climbing right turn to 3000 on heading 250° and FUZ VORTAC R-222 to LIKES INT/FUZ VORTAC 27 DME and hold.	
	D-ATIS 123.775	LONE STAR APP CON 118.425	DFW TOWER 126.55 127.5 (E) 124.15 134.9 (W)



1100	3000	LIKES	VGSI and ILS glidepath not coincident (VGSI Angle 3.00/TCH 74).	ICKEL I-VYV 19.3
		FUZ R-222	LEGRE I-VYV 9.9	YOHAN I-VYV 16.2
	hdg 250°		NETEE INT I-VYV 7.8	NETEE INT I-VYV 7.8
			2400	3000
			3000	4000
			IM	GS 3.00°
				TCH 59
CATEGORY	A	B	C	D
S-ILS 18R	RA 158/14		150 DA 757	

ELEV 607	D	TDZE 607
----------	----------	----------



SA CATEGORY I ILS - SPECIAL AIRCREW & AIRCRAFT CERTIFICATION REQUIRED

HIRL all Rwys
REIL Rwys 13L and 31L
TDZL/RCLS all Rwys except 13L and 31L

SC-2, 11 JUN 2026 to 09 JUL 2026

SC-2, 11 JUN 2026 to 09 JUL 2026