

LOC/DME I-RRA <b>110.9</b> Chan <b>46</b>	APP CRS <b>311°</b>	Rwy Ldg TDZE Apt Elev	<b>8373</b> <b>523</b> <b>607</b>
-------------------------------------------------	------------------------	-----------------------------	-----------------------------------------

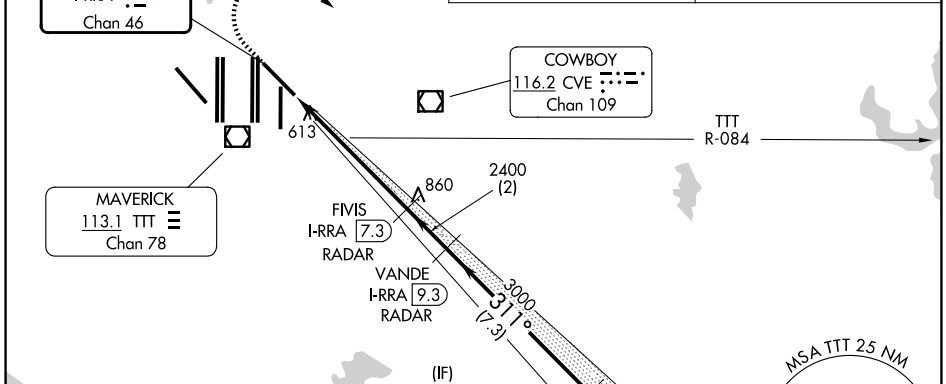
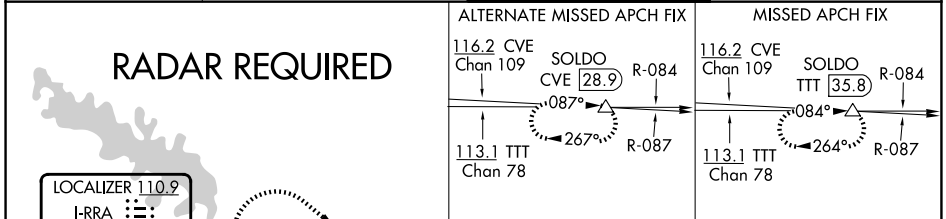
# ILS RWY 31R (SA CAT I & CAT II)

DALLAS-FORT WORTH INTL (DFW)

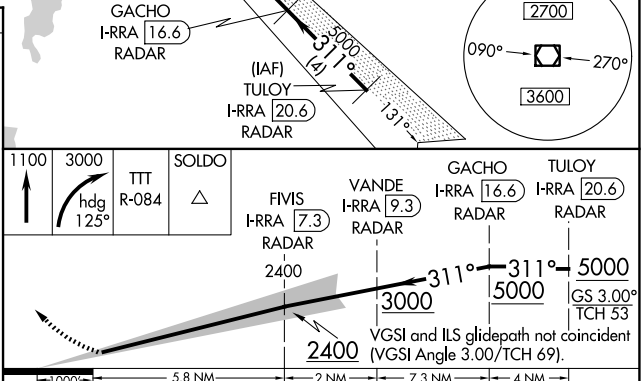
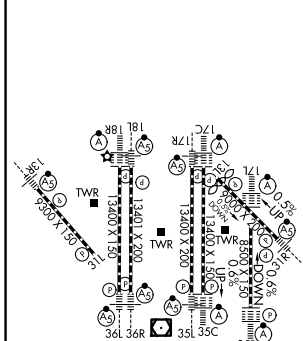
Simultaneous approach authorized. DME required.  
SA Cat I: Requires specific OPSPEC, MSPEC, or LOA approval and use of HUD to DH. SA Cat II: Reduced lighting: Requires specific OPSPEC, MSPEC, or LOA approval and use of autoland or HUD to touchdown.

MALSRS  
MISSED APPROACH: Climb to 1100 then climbing right turn to 3000 on heading 125° and TTT VOR/DME R-084 to SOLDO/TTT 35.8 DME and hold.

D-ATIS <b>123.775</b>	LONE STAR APP CON <b>135.5 125.2</b>	DFW TOWER <b>126.55 127.5 (E)</b> <b>124.15 134.9 (W)</b>	GND CON <b>121.65 121.8 (E)</b> <b>121.85 (W)</b>
--------------------------	-----------------------------------------	-----------------------------------------------------------------	---------------------------------------------------------



ELEV 607	<b>D</b>	TDZE 523
----------	----------	----------



CATEGORY	A	B	C	D
S-ILS 31R	SA CAT I	RA 176/14	150 DA 673	
S-ILS 31R	SA CAT II	RA 121/12	100 DA 623	

**SA CATEGORY I & II ILS SPECIAL AIRCREW & AIRCRAFT CERTIFICATION REQUIRED**

HIRL all Rwys  
REIL Rwy 13L and 31L  
TDZL/RCLS all Rwy except 13L and 31L

SC-2, 11 JUN 2026 to 09 JUL 2026

SC-2, 11 JUN 2026 to 09 JUL 2026