

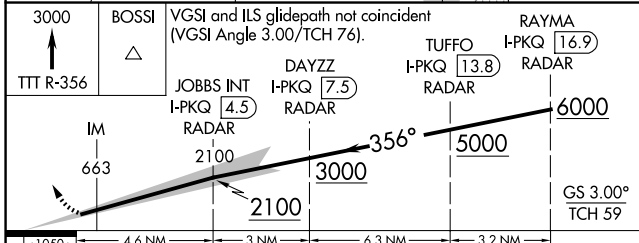
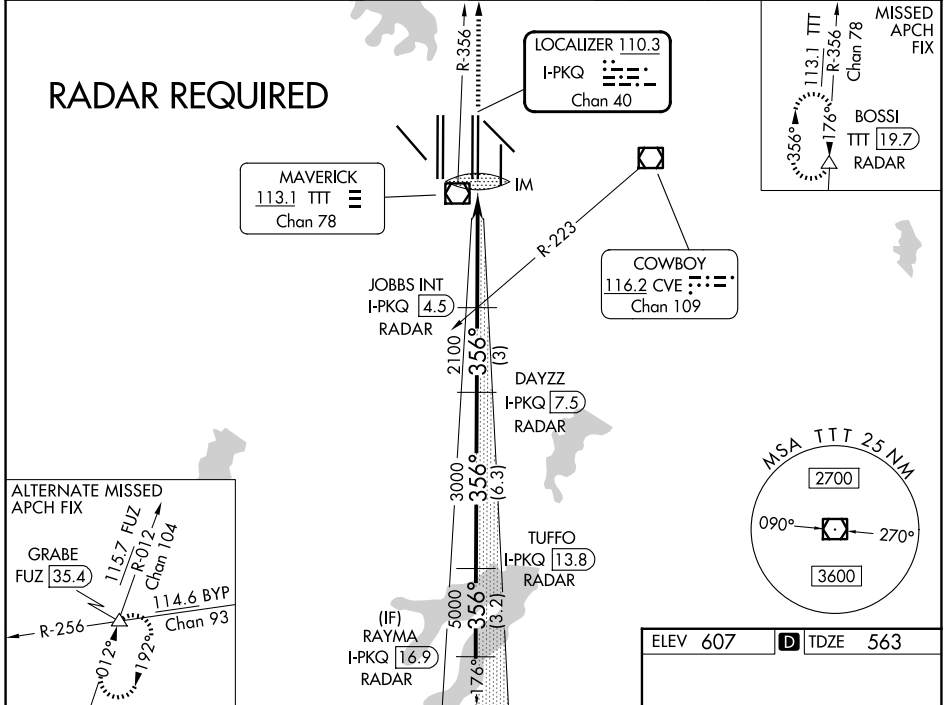
LOC/DME I-PKQ 110.3 Chan 40	APP CRS 356°	Rwy Ldg TDZE Apt Elev	13400 563 607
--	------------------------	-----------------------------	--

ILS RWY 35C (CAT II & III)

DALLAS-FORT WORTH INTL (DFW)

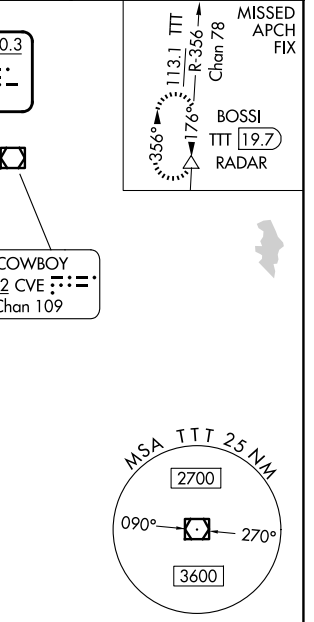
DME or RADAR required. Simultaneous approach authorized with Rwy 35R, Rwy 36L/R.	ALSF-2	MISSED APPROACH: Climb to 3000 on TTT VOR/DME R-356 to BOSSI/TTT 19.7 DME/RADAR and hold.
	(A)	

D-ATIS 123.775	LONE STAR APP CON 127.075	DFW TOWER 126.55 127.5 (E) 124.15 134.9 (W)	GND CON 121.65 121.8 (E) 121.85 (W)
--------------------------	-------------------------------------	---	---



CATEGORY	A	B	C	D
S-ILS 35C	CAT II RA 100/12 100 DA 663			
S-ILS 35C	CAT IIIa RVR 07			
S-ILS 35C	CAT IIIb RVR 06			
S-ILS 35C	CAT IIIc NA			

CATEGORY II & III ILS - SPECIAL AIRCREW & AIRCRAFT CERTIFICATION REQUIRED



HIRL all Rwys
REIL Rwys 13L and 31L
TDZL/RCLS all Rwys except 13L and 31L

SC-2, 11 JUN 2026 to 09 JUL 2026

SC-2, 11 JUN 2026 to 09 JUL 2026