

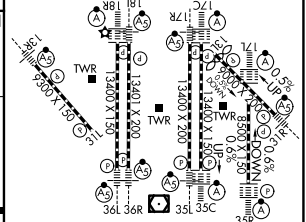
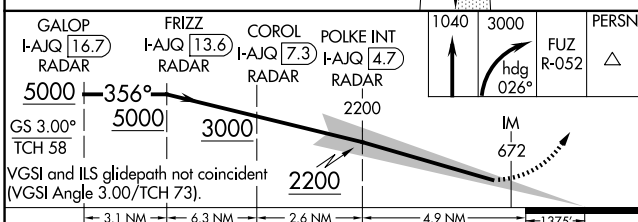
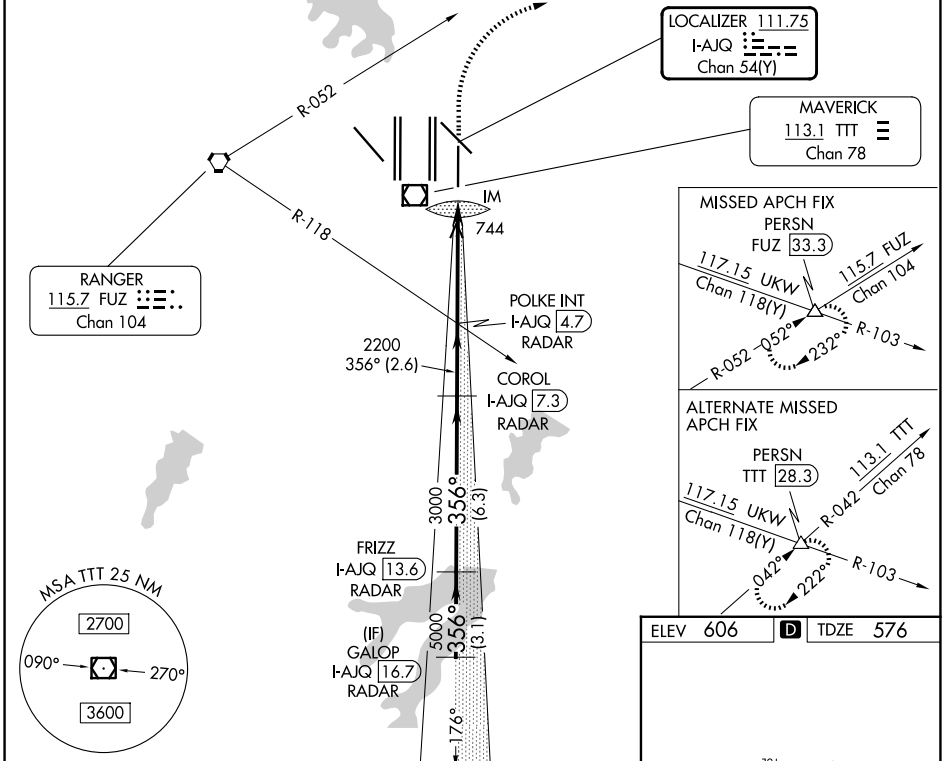
| | | |
|---|------------------------|------------------------|
| LOC/DME I-AJQ 111.75 Chan 54(Y) | APP CRS 356° | Rwy Ldg 8500 |
| | | TDZE 576 |
| | | Apt Elev 606 |

ILS RWY 35R (CAT II & III)

DALLAS-FORT WORTH INTL (DFW)

| | | |
|--|------------|---|
| DME or RADAR required. | ALSF-2 | MISSED APPROACH: Climb to 1040 then climbing right turn to 3000 on heading 026° and on FUZ VORTAC R-052 to PERSN/FUZ 33.3 DME and hold. |
| Simultaneous approach authorized. CAT II: RVR 1000 authorized with specific OPSPEC, MSPEC, or LOA approval and use of autoland or HUD to touchdown. | | |

| | | | |
|--------------------------|-----------------------------------|---|---|
| D-ATIS 123.775 | LONE STAR APP CON 119.4 | DFW TOWER 126.55 127.5 (E) 124.15 134.9 (W) | GND CON 121.65 121.8 (E) 121.85 (W) |
|--------------------------|-----------------------------------|---|---|



| | | | | |
|-----------|----------------------------|---|---|---|
| CATEGORY | A | B | C | D |
| S-ILS 35R | CAT II RA 92/12 100 DA 676 | | | |
| S-ILS 35R | CAT III RVR 06 | | | |

CATEGORY II & III ILS - SPECIAL AIRCREW & AIRCRAFT CERTIFICATION REQUIRED

HIRL all rwys
REIL Rwy's 13L and 31L
TDZL/RCLS all rwys except 13L, and 31L

SC-2, 11 JUN 2026 to 09 JUL 2026

SC-2, 11 JUN 2026 to 09 JUL 2026