

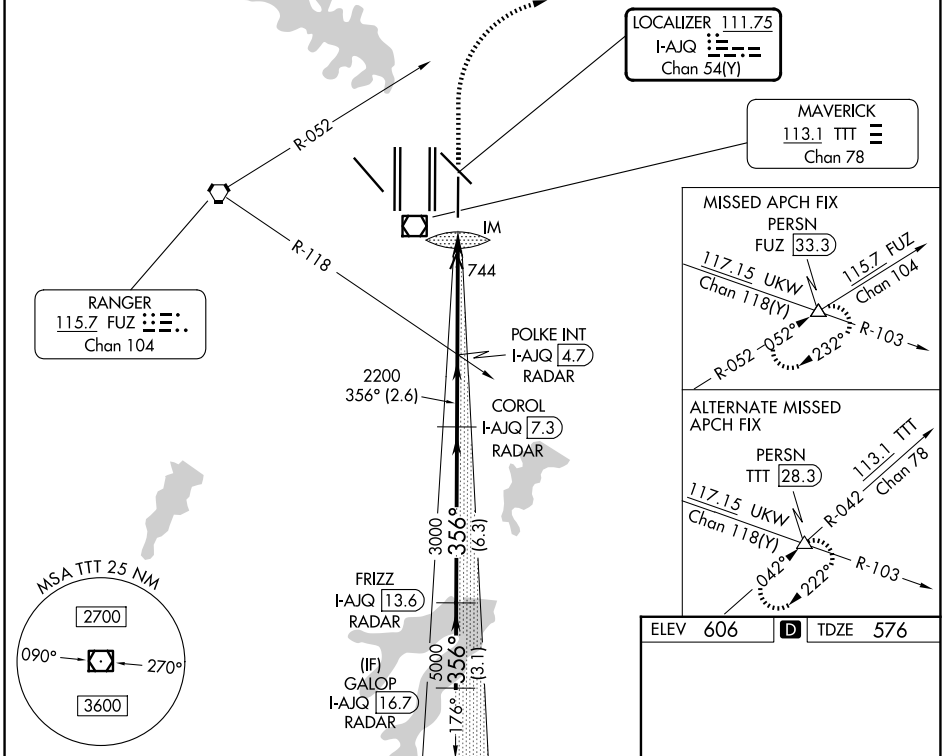
LOC/DME I-AJQ 111.75 Chan 54(Y)	APP CRS 356°	Rwy Ldg TDZE Apt Elev 8500 576 606
---	------------------------	--

ILS RWY 35R (SA CAT I)

DALLAS-FORT WORTH INTL (DFW)

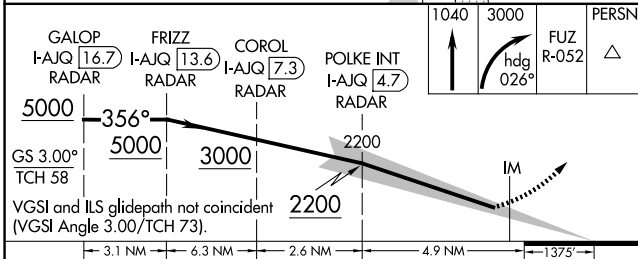
DME or RADAR required.		ALSF-2	MISSED APPROACH: Climb to 1040 then climbing right turn to 3000 on heading 026° and on FUZ VORTAC R-052 to PERSN/FUZ 33.3 DME and hold.
Simultaneous approach authorized. Requires specific OPSPEC, MSPEC, or LOA approval.			

D-ATIS 123.775	LONE STAR APP CON 119.4	DFW TOWER 126.55 127.5 (E) 124.15 134.9 (W)	GND CON 121.65 121.8 (E) 121.85 (W)
--------------------------	-----------------------------------	---	---



SC-2, 11 JUN 2026 to 09 JUL 2026

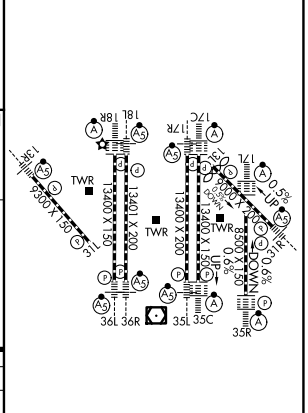
SC-2, 11 JUN 2026 to 09 JUL 2026



CATEGORY	A	B	C	D
S-ILS 35R	RA 139/14 150 DA 726			

SA CATEGORY I ILS - SPECIAL AIRCREW & AIRCRAFT CERTIFICATION REQUIRED

ELEV 606	D TDZE 576
----------	-------------------



HIRL all rwys
REL Rwy 13L and 31L
TDZL/RCLS all rwys except 13L, and 31L