

LOC/DME I-BXN 111.9 Chan 56	APP CRS 356°	Rwy Ldg 36L 36R 13400 13401 TDZE 588 581 Apt Elev 606 606
-------------------------------------------------	------------------------	---------------------------------------------------------------------------------------------------

ILS or LOC RWY 36L

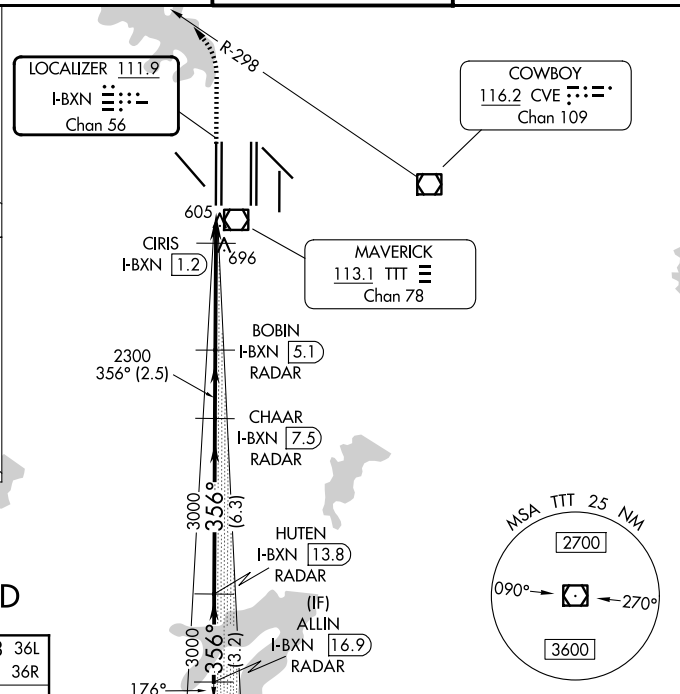
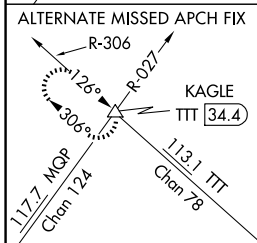
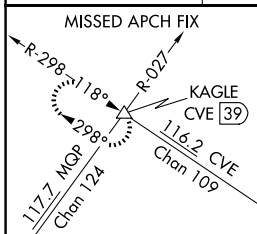
DALLAS-FORT WORTH INTL (DFW)

▼ Inop table does not apply to Sidestep 36R. Simultaneous approach authorized with Rwy 35L/C/R. DME or RADAR required. For inop ALS, increase S-LOC 36L Cat C and D visibility to 1 $\frac{1}{2}$ SM. For inop ALS, increase CIRIS fix minimums (DME required) S-LOC 36L Cats C and D visibility to RVR 5500.



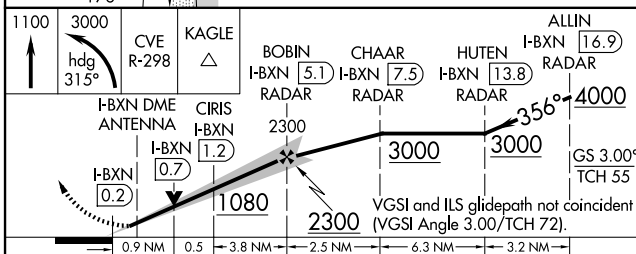
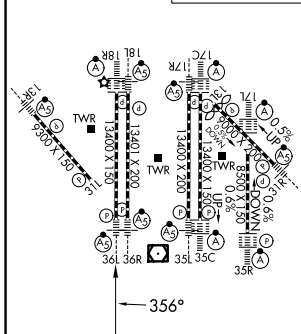
MISSED APPROACH: Climb to 1100 then climbing left turn to 3000 on heading 315° and CVE VOR/DME R-298 to KAGLE INT/ CVE VOR/DME 39 DME and HGLD.

D-ATIS 123.775	LONE STAR APP CON 118.425	DFW TOWER 126.55 127.5 (E) 124.15 134.9 (W)	GND CON 121.65 121.8 (E) 121.85 (W)
--------------------------	-------------------------------------	-----------------------------------------------------------------	---------------------------------------------------------



RADAR REQUIRED

ELEV 606	D	TDZE 588 36L
		TDZE 581 36R



CATEGORY	A	B	C	D
S-ILS 36L	788/18 200 (200- $\frac{1}{2}$)			
S-LOC 36L	1080/24	492 (500- $\frac{1}{2}$)	1080/50	492 (500-1)
SIDESTEP 36R	1080/50	499 (500-1)	1080-1 $\frac{1}{2}$	499 (500-1 $\frac{1}{2}$)
CIRIS FIX MINIMUMS (DME required)				
S-LOC 36L	940/24	352 (400- $\frac{1}{2}$)	940/30	352 (400- $\frac{5}{8}$)