

LOC/DME I-FJN 110.55 Chan 42 (Y)	APP CRS 356°	Rwy Ldg 36R 36L TDZE 581 588 Apt Elev 607 607
---	------------------------	--

ILS or LOC RWY 36R

DALLAS-FORT WORTH INTL (DFW)

Simultaneous approach authorized with Rwy 35L/C/R. Inop table does not apply to Sidestep 36L Cats A and B. DME or RADAR required.



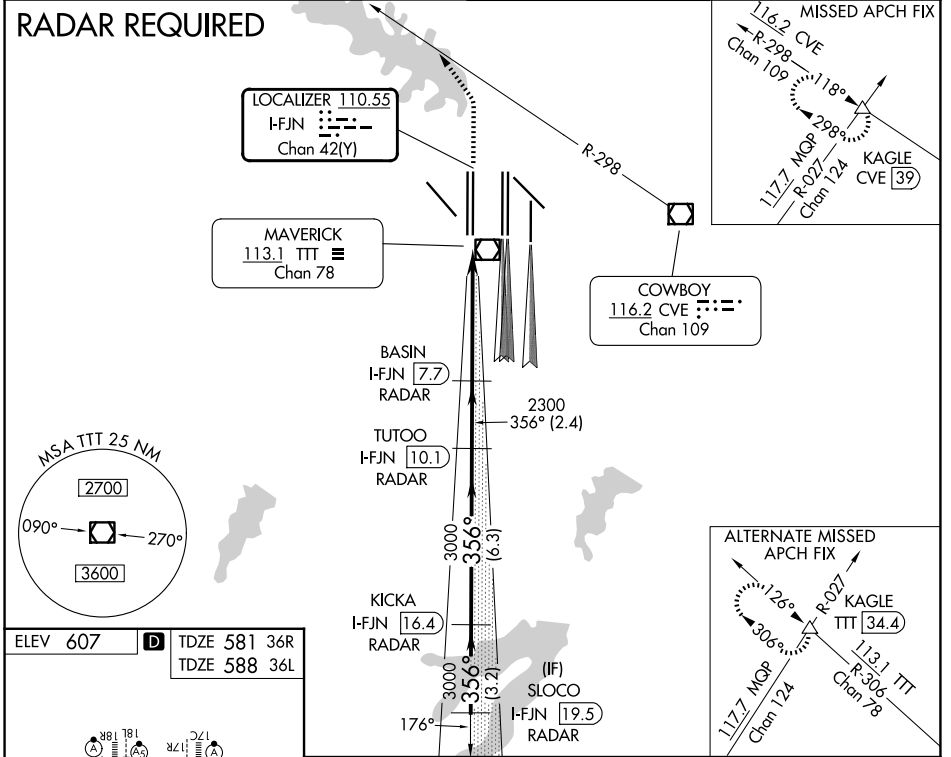
MISSED APPROACH: Climb to 1100, then climbing left turn to 3000 on heading 320° and CVE VOR/DME R-298 to KAGLE INT/CVE 39 DME and hold.

D-ATIS
123.775

LONE STAR APP CON
118.425

DFW TOWER
126.55 127.5 (E)
124.15 134.9 (W)

GND CON
121.65 121.8 (E)
121.85 (W)



SC-2, 11 JUN 2026 to 09 JUL 2026

SC-2, 11 JUN 2026 to 09 JUL 2026

ELEV 607 **D** TDZE 581 36R
TDZE 588 36L

HIRL all Rws
REIL Rws 13L and 31L
TDZL/RCLS all Rws except 13L and 31L

FAF to MAP 5.3 NM

Knots	60	90	120	150	180
Min:Sec	5:18	3:32	2:39	2:07	1:46

1100	3000	CVE R-298	KAGLE	BASIN I-FJN 7.7	TUTOO I-FJN 10.1	KICKA I-FJN 16.4	SLOCO I-FJN 19.5
*LOC only							
I-FJN 2.4		*I-FJN 3.5		I-FJN 3.5		I-FJN 3.5	
1.1 NM		4.2 NM		2.4 NM		3.2 NM	
CATEGORY	A		B		C		D
S-ILS 36R	781/18		200 (200-1/2)				
S-LOC 36R	1000/24		419 (400-1/2)		1000/40		419 (400-3/4)
SIDESTEP 36L	1080/50		492 (500-1)		1080-1 1/2		492 (500-1 1/2)

VGSI and ILS glidepath not coincident (VGSI Angle 3.00/TCH 66).