

LOC/DME I-LWN <b>109.5</b> Chan <b>32</b>	APP CRS <b>135°</b>	Rwy Ldg <b>9300</b> TDZE <b>591</b> Apt Elev <b>606</b>
---	------------------------	---

# ILS V RWY 13R (CONVERGING)

DALLAS-FORT WORTH INTL (DFW)

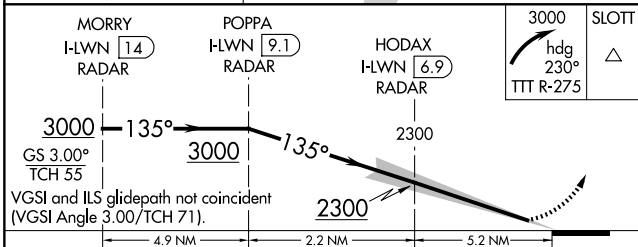
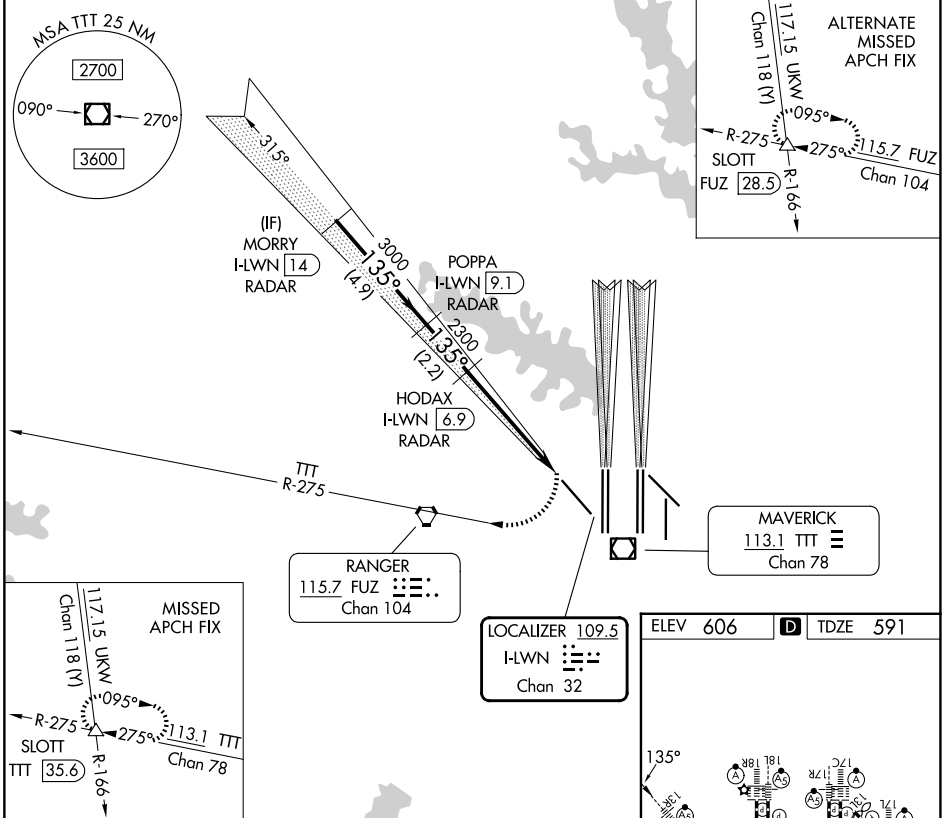
**RADAR required for procedure entry.**

⚠ Simultaneous converging approach authorized with Converging ILS Rwy 18L/R and Converging ILS Rwy 17C/R. For inop ALS, increase S-ILS 13R all Cats visibility to 2¼.

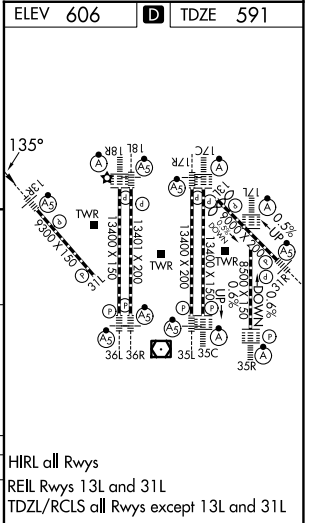
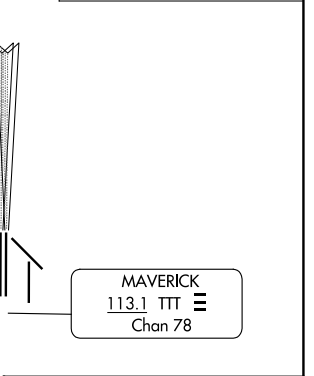
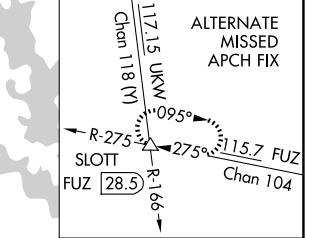
**MALSR**

MISSED APPROACH: Climbing right turn to 3000 on heading 230° and TTT VOR/DME R-275 to SLOTT/TTT 35.6 DME and hold.

D-ATIS <b>123.775</b>	LONE STAR APP CON <b>133.15 118.1</b>	DFW TOWER <b>126.55 127.5 (E)</b> <b>124.15 134.9 (W)</b>	GND CON <b>121.65 121.8 (E)</b> <b>121.85 (W)</b>
--------------------------	--	---	---



CATEGORY	A	B	C	D
S-ILS 13R	1401-2½	810 (800-2½)	1441-2½ 850 (900-2½)	NA



SC-2, 11 JUN 2026 to 09 JUL 2026

SC-2, 11 JUN 2026 to 09 JUL 2026