

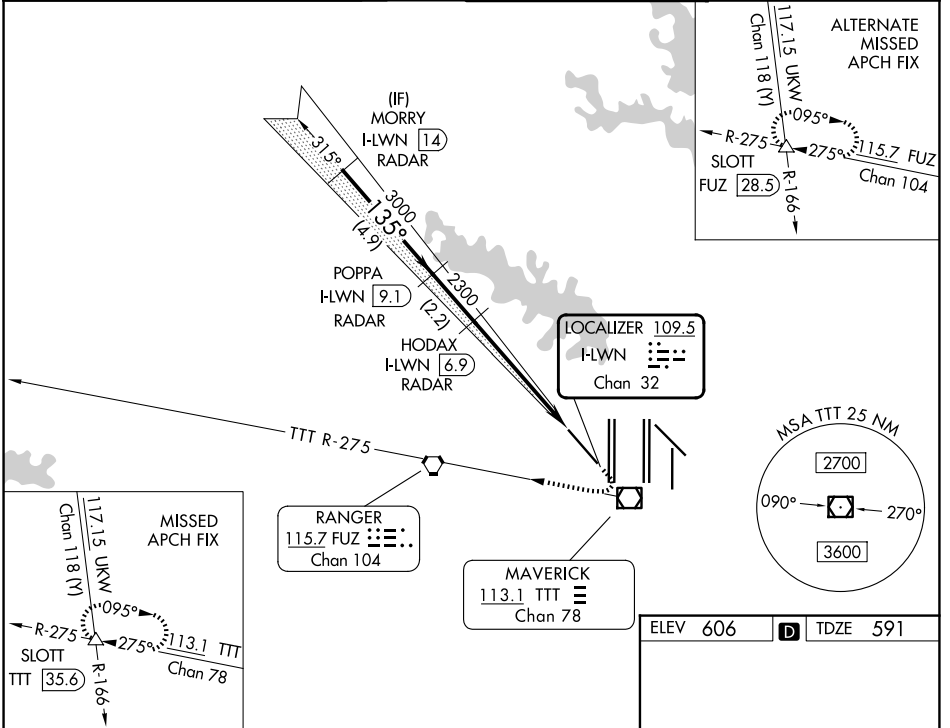
LOC/DME I-LWN 109.5 Chan 32	APP CRS 135°	Rwy Ldg 9300 TDZE 591 Apt Elev 606
---	------------------------	---

ILS Z RWY 13R (SA CAT I & II)

DALLAS-FORT WORTH INTL (DFW)

RADAR required for procedure entry.		MALSR 	MISSED APPROACH: Climb to 1560 then climbing right turn to 3000 on heading 230° and TTT VOR/DME R-275 to SLOTT INT/TTT 35.6 DME and hold.
-------------------------------------	--	-----------	---

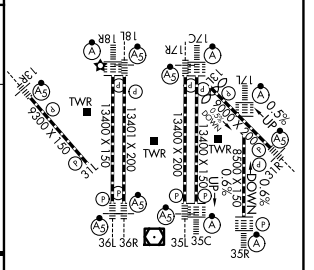
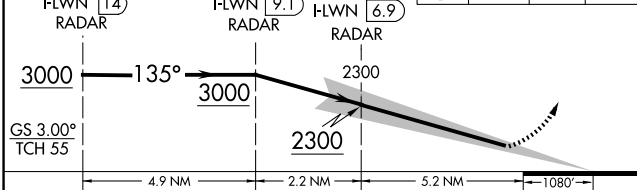
D-ATIS 123.775	LONE STAR APP CON 133.15 118.1	DFW TOWER 126.55 127.5 (E) 124.15 134.9 (W)	GND CON 121.65 121.8 (E) 121.85 (W)
--------------------------	--	---	---



SC-2, 11 JUN 2026 to 09 JUL 2026

SC-2, 11 JUN 2026 to 09 JUL 2026

ELEV 606	D TDZE 591
----------	-------------------



VGSI and ILS glidepath not coincident (VGSI Angle 3.00/TCH 71).	1560	3000	TTT R-275	SLOTT
MORRY I-LWN 14 RADAR	POPPI I-LWN 9.1 RADAR	HODAX I-LWN 6.9 RADAR		

CATEGORY	A	B	C	D
S-ILS 13R	SA CAT I	RA 149/14	150 DA 741	
S-ILS 13R	SA CAT II	RA 99/12	100 DA 691	

HIRL all Rwy's
REIL Rwy's 13L and 31L
TDZL/RCLS all Rwy's except 13L and 31L