

LOC/DME I-LWN 109.5 Chan 32	APP CRS 135°	Rwy Ldg 9300 TDZE 591 Apt Elev 606
---	------------------------	---

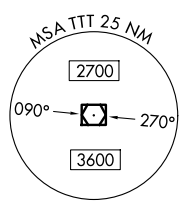
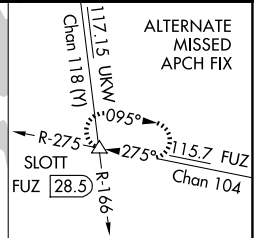
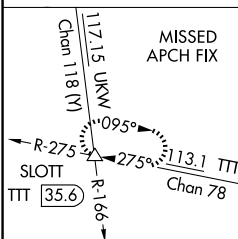
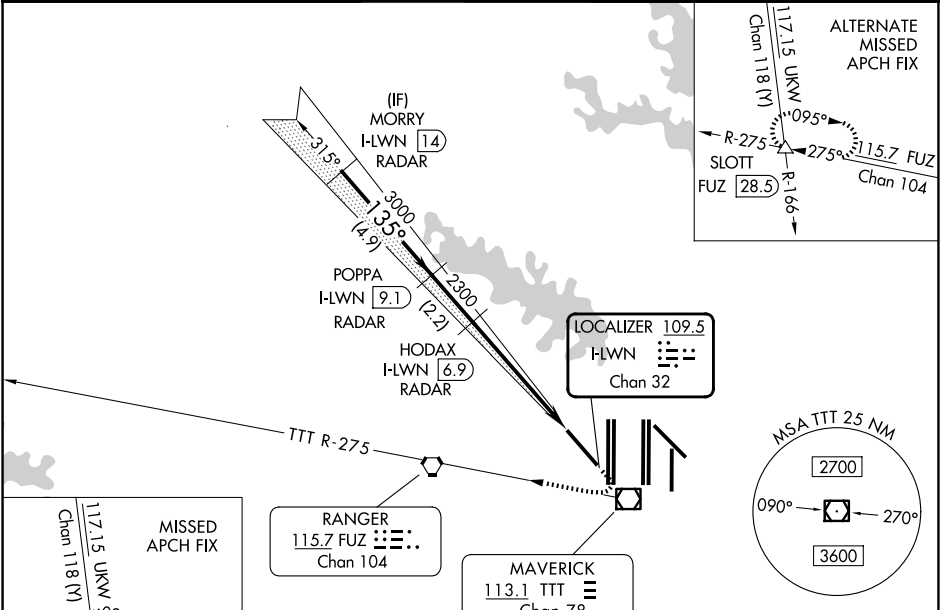
ILS Z or LOC Z RWY 13R

DALLAS-FORT WORTH INTL (DFW)

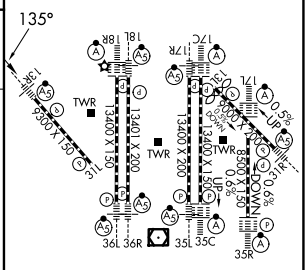
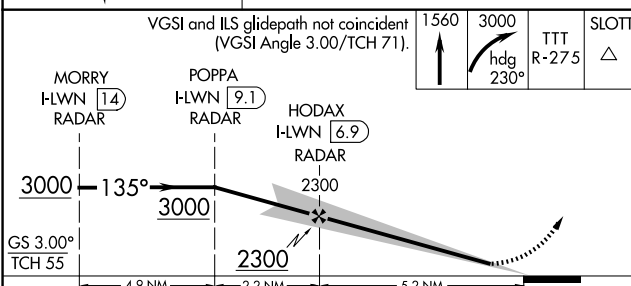
RADAR required for procedure entry.
DME or RADAR required for LOC only.

MALSRL MISSED APPROACH: Climb to 1560 then climbing right turn to 3000 on heading 230° and TTT VOR/DME R-275 to SLOTT INT/TTT 35.6 DME and hold.

D-ATIS 123.775	LONE STAR APP CON 133.15 118.1	DFW TOWER 126.55 127.5 (E) 124.15 134.9 (W)	GND CON 121.65 121.8 (E) 121.85 (W)
--------------------------	--	---	---



ELEV 606	D	TDZE 591
----------	---	----------



CATEGORY	A	B	C	D
S-ILS 13R	791/18		200 (200-½)	
S-LOC 13R	1240/24	649 (700-½)	1240-1⅓	649 (700-1⅓)

SC-2, 11 JUN 2026 to 09 JUL 2026

SC-2, 11 JUN 2026 to 09 JUL 2026