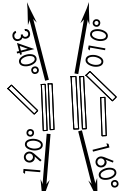


JOE POOL EIGHT DEPARTURE

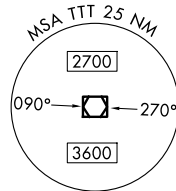
TOP ALTITUDE:
RWYS 13L/R, 17L/C/R, 18L/R,
35L/C/R, 36L/R: 10000
RWYS 31L/R: 5000

LONE STAR DEP CON
125.125 353.95 (17C/R, 18L/R)
126.475 363.15 (36L/R)
118.55 290.35 (35L/C)
D-ATIS DEP
135.925
CLNC DEL
128.25
CPDLC
GND CON
121.65 121.8 (E)
121.85 (W)
DFW TOWER
126.55 127.5 (E)
124.15 134.9 (W)



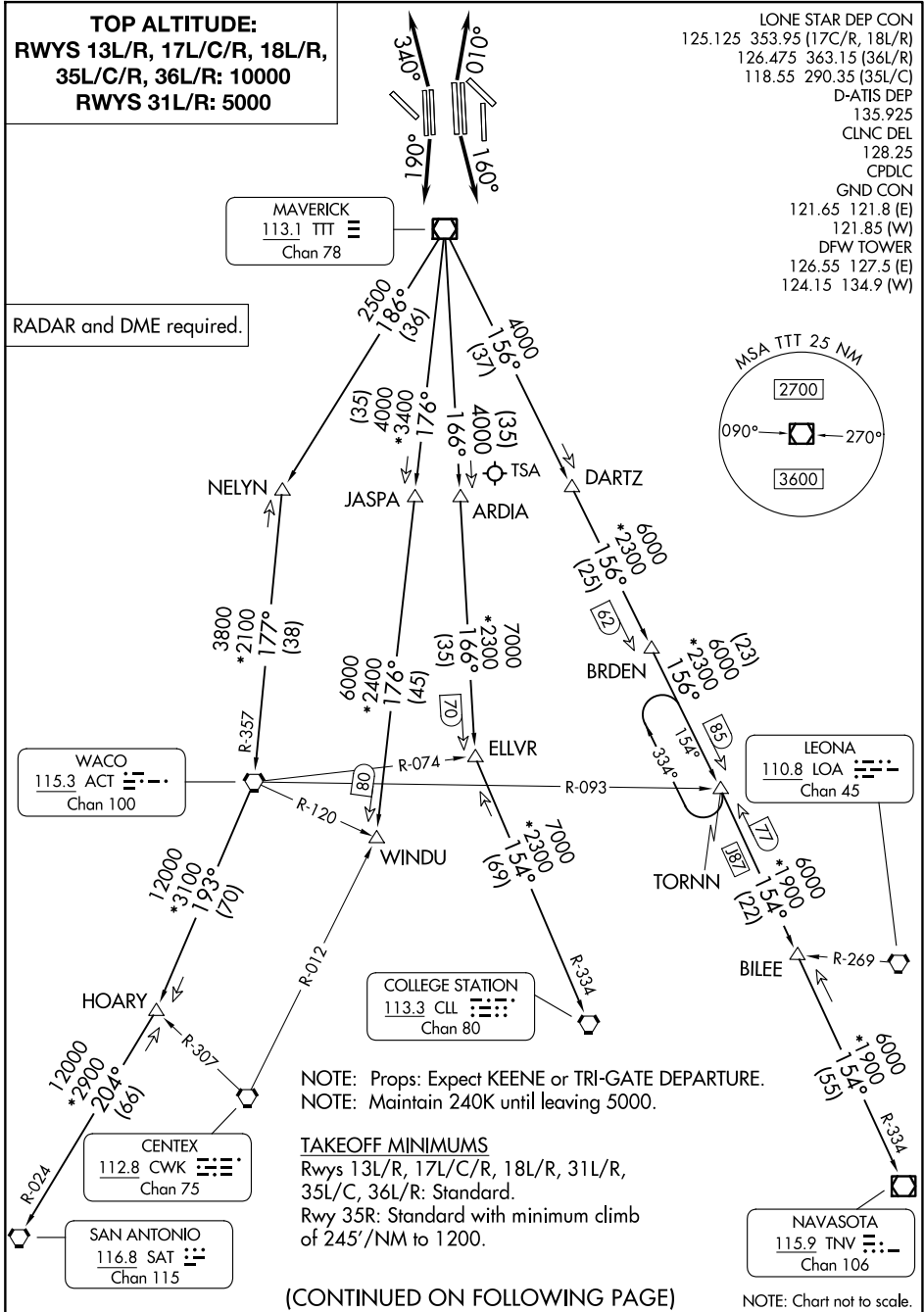
MAVERICK
113.1 TTT
Chan 78

RADAR and DME required.



SC-2, 11 JUN 2026 to 09 JUL 2026

SC-2, 11 JUN 2026 to 09 JUL 2026



NOTE: Props: Expect KEENE or TRI-GATE DEPARTURE.
NOTE: Maintain 240K until leaving 5000.

TAKEOFF MINIMUMS
Rwys 13L/R, 17L/C/R, 18L/R, 31L/R,
35L/C, 36L/R: Standard.
Rwy 35R: Standard with minimum climb
of 245'/NM to 1200.

(CONTINUED ON FOLLOWING PAGE)

NOTE: Chart not to scale.

JOE POOL EIGHT DEPARTURE

JOE POOL EIGHT DEPARTURE



DEPARTURE ROUTE DESCRIPTION

- TAKEOFF RUNWAYS 31L/R: Climb on assigned heading, maintain 5000, thence. . .
- TAKEOFF RUNWAYS 13L/R, 17L, 35R: Climb on assigned heading, maintain 10000, thence. . .
- TAKEOFF RUNWAYS 17C/R: Climb on heading 160°, maintain 10000, thence. . .
- TAKEOFF RUNWAYS 18L/R: Climb on heading 190°, maintain 10000, thence. . .
- TAKEOFF RUNWAYS 35L/C: Climb on heading 010°, maintain 10000, thence. . .
- TAKEOFF RUNWAYS 36L/R: Climb on heading 340°, maintain 10000, thence. . .

. . .for RADAR vectors to appropriate route and expect filed altitude 10 minutes after departure.

COLLEGE STATION TRANSITION (JPOOL8.CLL): From over TTT VOR/DME on TTT R-166 to ELLVR, then on CLL R-334 to CLL VORTAC.

ELLVR TRANSITION (JPOOL8.ELLVR): From over TTT VOR/DME on TTT R-166 to ELLVR.

HOARY TRANSITION (JPOOL8.HOARY): From over TTT VOR/DME on TTT R-186 to NELYN, then on ACT R-357 to ACT VORTAC, then on ACT R-193 to HOARY.

NAVASOTA TRANSITION (JPOOL8.TNV): From over TTT VOR/DME on TTT R-156 to TORNN, then on TNV R-334 to TNV VOR/DME.

SAN ANTONIO TRANSITION (JPOOL8.SAT): From over TTT VOR/DME on TTT R-186 to NELYN, then on ACT R-357 to ACT VORTAC, then on ACT R-193 to HOARY, then on SAT R-024 to SAT VORTAC.

TORNN TRANSITION (JPOOL8.TORNN): From over TTT VOR/DME on TTT R-156 to TORNN.

WACO TRANSITION (JPOOL8.ACT): From over TTT VOR/DME on TTT R-186 to NELYN, then on ACT R-357 to ACT VORTAC.

WINDU TRANSITION (JPOOL8.WINDU): From over TTT VOR/DME on TTT R-176 to WINDU.

NOTE: COLLEGE STATION Transition: For piston and turboprop aircraft destined to HOU, EFD, GLS, or LBX. Also for all other aircraft types destined to all other Houston terminal area airports except IAH, CXO, DWH, T78 or 6R3.

NOTE: ELLVR Transition: For turbojet aircraft destined to HOU, EFD, GLS, or LBX.

NOTE: SAN ANTONIO Transition: For aircraft overflying Centex and San Antonio.

NOTE: TORNN Transition: Only for aircraft destined IAH, CXO, DWH, T78 or 6R3.

NOTE: WACO Transition: For aircraft inbound to Waco or Gray terminal area airports.

NOTE: WINDU Transition: For aircraft inbound to Austin or San Antonio terminal area.

SC-2, 11 JUN 2026 to 09 JUL 2026

SC-2, 11 JUN 2026 to 09 JUL 2026