

WAAS CH 97324 W17D	APP CRS 176°	Rwy Ldg 13400 TDZE 562 Apt Elev 607
--	------------------------	--

RNAV (GPS) RWY 17C

DALLAS-FORT WORTH INTL (DFW)

▼ For uncompensated Baro-VNAV systems, LNAV/VNAV NA below -4°C (25°F) or above 54°C (130°F). Simultaneous approach authorized with Rwy 17L and 18L/R. DME/DME RNP-0.3 NA. LNAV procedure NA during simultaneous operations. Use of FD or AP providing RNAV track guidance required during simultaneous operations.

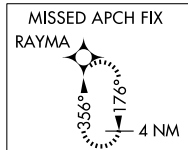
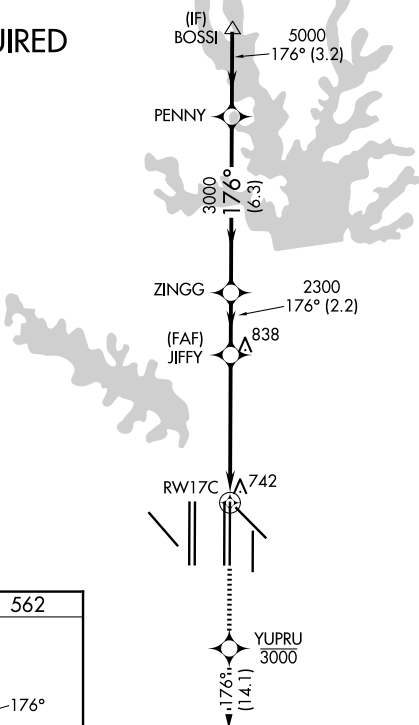
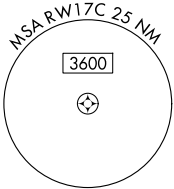
ALSF-2



MISSED APPROACH: Climb to at or below 3000 direct YUPRU then climb to 4000 on track 176° to RAYMA and hold.

D-ATIS 123.775	LONE STAR APP CON 127.075	DFW TOWER 126.55 127.5 (E) 124.15 134.9 (W)	GND CON 121.65 121.8 (E) 121.85 (W)
--------------------------	-------------------------------------	---	---

RADAR REQUIRED



ELEV 607 **D** TDZE 562

HIRL all Rwys
REIL Rwys 13L and 31L
TDZL/RCLS all Rwys except 13L and 31L

3000	YUPRU	4000	RAYMA	VGSi and RNAV glidepath not coincident (VGSi Angle 3.00/TCH 74).	
↑	✦	↑	✦	PENNY	BOSSI
*LNAV only.		JIFFY	ZINGG	176°	6000
RWY17C		*1.1 NM to RWY17C	2300	5000	GP 3.00° TCH 58
1.1 NM		4.2 NM	2.2 NM	6.3 NM	3.2 NM
CATEGORY	A		B		D
LPV DA			762/18		200 (200-½)
LNAV/VNAV DA			1068/60		506 (500-¼)
LNAV MDA	1000/24		438 (400-½)		1000/40 438 (400-¾)

SC-2, 11 JUN 2026 to 09 JUL 2026

SC-2, 11 JUN 2026 to 09 JUL 2026