

WAAS CH 4000B W17B	APP CRS 176°	Rwy Ldg TDZE Apt Elev	8500 545 607
--	------------------------	-----------------------------	---

RNAV (GPS) RWY 17L

DALLAS-FORT WORTH INTL (DFW)

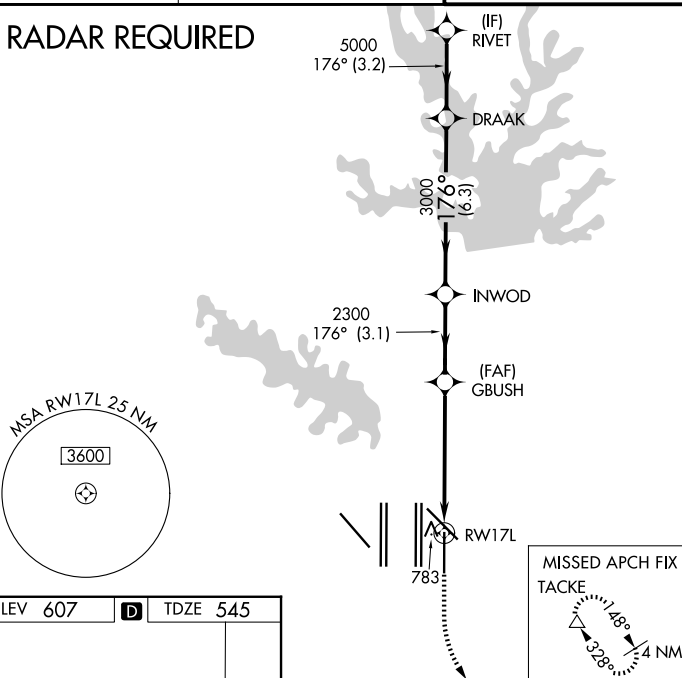
▼ For uncompensated Baro-VNAV systems, LNAV/VNAV NA below -5°C (23°F) or above 54°C (130°F). DME/DME RNP-0.3 NA. Simultaneous approach authorized with Rwy 17C/R and Rwy 18L/R. LNAV procedure NA during simultaneous operations. Use of FD or AP providing RNAV track guidance required during simultaneous operations.



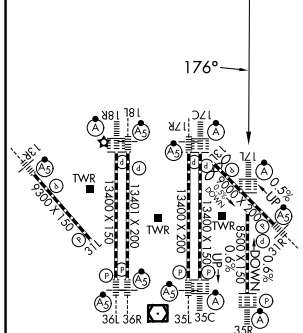
MISSED APPROACH: Climb to 1020 then climbing left turn to 3000 direct TACKE and hold.

D-ATIS 123.775	LONE STAR APP CON 119.4	DFW TOWER 126.55 127.5 (E) 124.15 134.9 (W)	GND CON 121.65 121.8 (E) 121.85 (W)
--------------------------	-----------------------------------	---	---

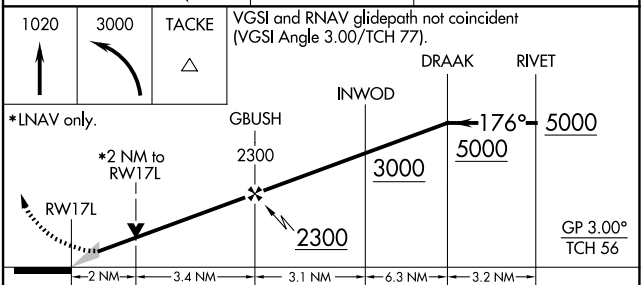
RADAR REQUIRED



ELEV 607	D	TDZE 545
-----------------	----------	-----------------



HIRL all Rwys
REIL Rwy 13L and 31L
TDZL/RCLS all Rwy except 13L and 31L



CATEGORY	A	B	C	D
LPV DA		745/18	200 (200-½)	
LNAV/VNAV DA		1063/60	518 (500-1¼)	
LNAV MDA	1240/24	695 (700-½)	1240-1½	695 (700-1½)