

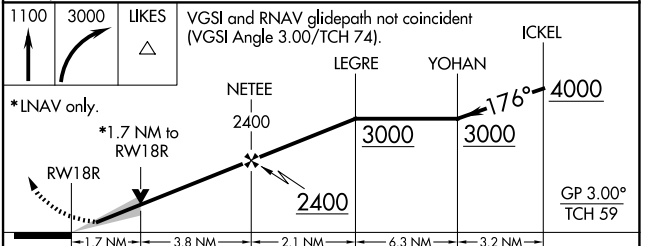
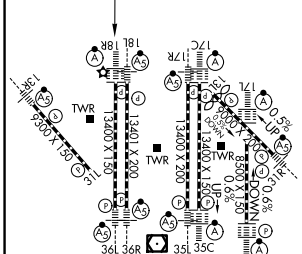
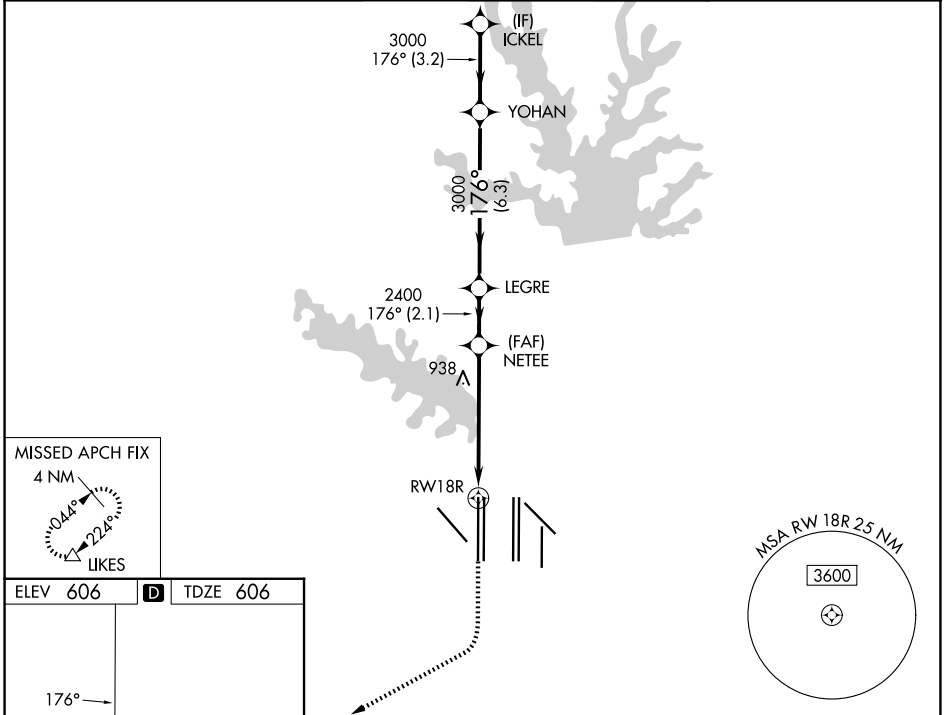
WAAS CH 99407 W18B	APP CRS 176°	Rwy Ldg 13400 TDZE 606 Apt Elev 606
--	------------------------	--

RNAV (GPS) RWY 18R

DALLAS-FORT WORTH INTL (DFW)

RADAR required for procedure entry. RNP APCH.		ALSF-2 	MISSED APPROACH: Climb to 1100 then climbing right turn to 3000 direct LIKES and hold.
⚠ Simultaneous approach authorized with Rwy 17L/C/R. For uncompensated Baro-VNAV systems, LNAV/VNAV NA below -4°C or above 54°C. LNAV procedure NA during simultaneous operations. Use of FD or AP providing RNAV track guidance required during simultaneous operations. For inop ALS, increase LNAV/VNAV all Cats visibility to RVR 6000 and LNAV Cats C and D visibility to 1¼ SM.			

D-ATIS 123.775	LONE STAR APP CON 118.425	DFW TOWER 126.55 127.5 (E) 124.15 134.9 (W)	GND CON 121.65 121.8 (E) 121.85 (W)
--------------------------	-------------------------------------	---	---



CATEGORY	A	B	C	D
LPV DA		806/18	200 (200-½)	
LNAV/VNAV DA		1012/40	406 (500-¾)	
LNAV MDA	1220/24	614 (700-½)	1220-1⅓	614 (700-1⅓)

HIRL all Rwys
 REIL Rwys 13L and 31L
 TDZL/RCLS all Rwys except 13L and 31L

SC-2, 11 JUN 2026 to 09 JUL 2026

SC-2, 11 JUN 2026 to 09 JUL 2026