

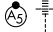
RNAV (RNP) Z RWY 13R

DALLAS-FORT WORTH INTL (DFW)

APP CRS 135°	Rwy Ldg 9300
	TDZE 591
	Apt Elev 606

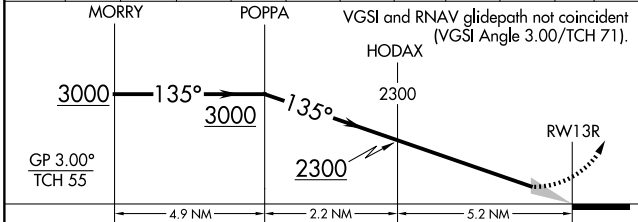
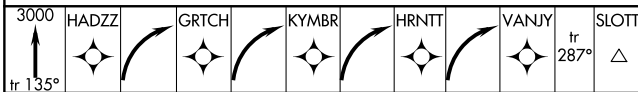
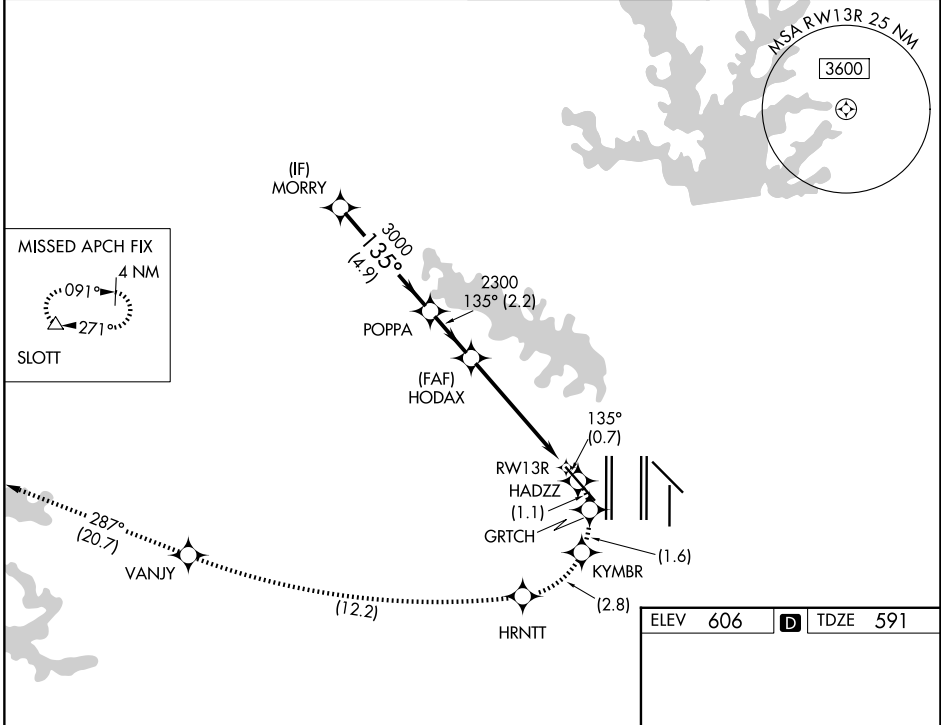
RNP AR APCH. RF required.

▼ For uncompensated Baro-VNAV systems, procedure NA below -6°C or above 54°C. Missed approach requires RNP less than 1.0.

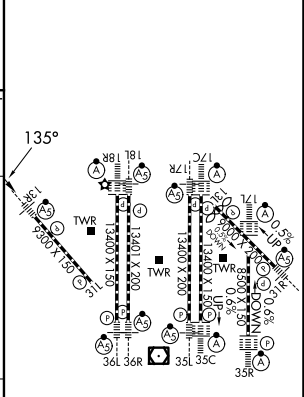
MALSR 

MISSED APPROACH: (Do not exceed 185K until HRNTT) Climb to 3000 on the RNAV missed approach route to SLOTT and hold.

D-ATIS 123.775	LONE STAR APP CON 133.15 118.1	DFW TOWER 126.55 127.5 (E) 124.15 134.9 (W)	GND CON 121.65 121.8 (E) 121.85 (W)
--------------------------	--	---	---



ELEV 606	D TDZE 591
----------	-------------------



CATEGORY	A	B	C	D
RNP 0.30 DA		1041/45	450 (500-7%)	

AUTHORIZATION REQUIRED

HIRL all Rwys
REIL Rwy 13L and 31L
TDZL/RCLS all Rwys except 13L and 31L