

APP CRS 311°	Rwy Ldg TDZE Apt Elev	8373 523 607
------------------------	-----------------------------	---

RNAV (RNP) Z RWY 31R

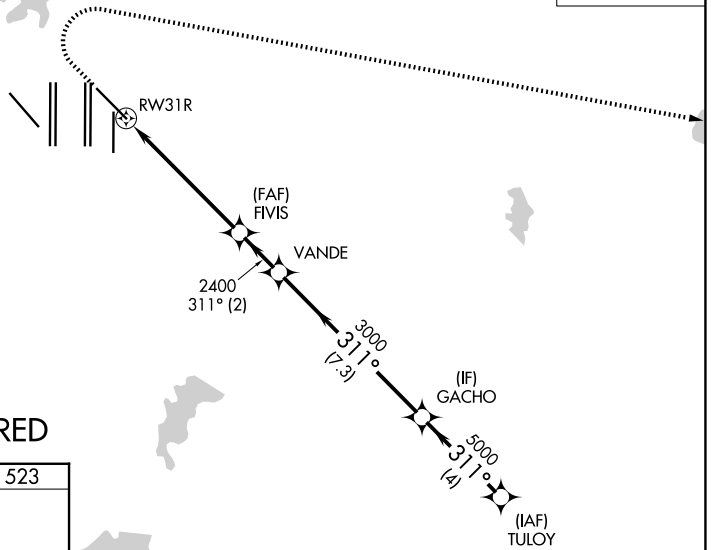
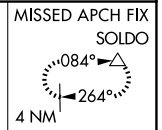
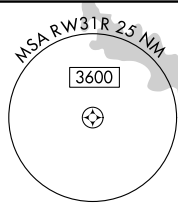
DALLAS-FORT WORTH INTL (DFW)

▼ For uncompensated Baro-VNAV systems, procedure NA below -4°C (25°F) or above 54°C (130°F). For inop MALSRS, increase RNP 0.14 all Cats visibility to RVR 5100, RNP 0.23 all Cats visibility to 1½ mile, RNP 0.30 all Cats visibility to 1½ mile. Simultaneous approach authorized with Rwy 31L. GPS Required. Use of FD or AP providing RNAV track guidance required during simultaneous operations.



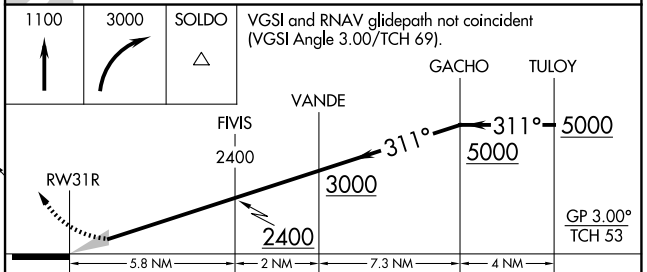
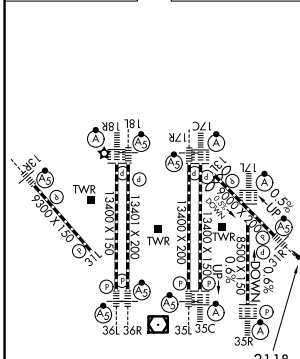
MISSED APPROACH: Climb to 1100 then climbing right turn to 3000 direct SOLDO and hold.

D-ATIS 123.775	LONE STAR APP CON 135.5 125.2	DFW TOWER 126.55 127.5 (E) 124.15 134.9 (W)	GND CON 121.65 121.8 (E) 121.85 (W)
--------------------------	---	---	---



RADAR REQUIRED

ELEV 607	D	TDZE 523
----------	----------	----------



CATEGORY	A	B	C	D
RNP 0.14 DA		838/27	315 (300-¾%)	
RNP 0.23 DA		928/44	405 (400-¾%)	
RNP 0.30 DA		987/55	464 (400-1)	

AUTHORIZATION REQUIRED

SC-2, 11 JUN 2026 to 09 JUL 2026