

| | | | |
|--|------------------------|-----------------------------|---|
| WAAS CH 56238 W28A | APP CRS 276° | Rwy Ldg TDZE Apt Elev | 5003 975 994 |
|--|------------------------|-----------------------------|---|

RNAV (GPS) RWY 28

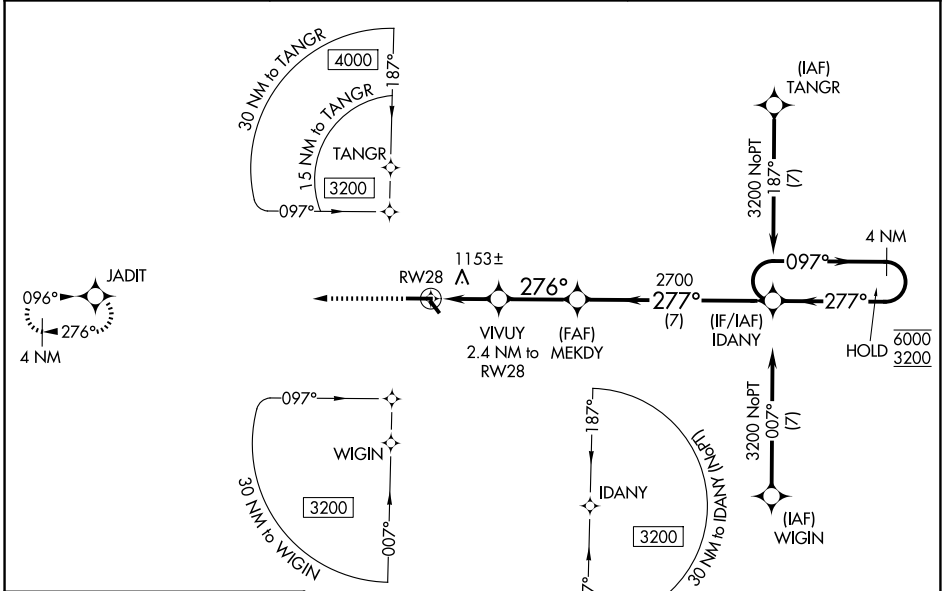
ROBEN-HOOD (RQB)

RNP APCH - GPS.

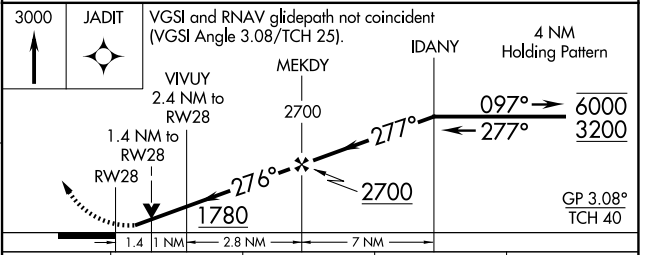
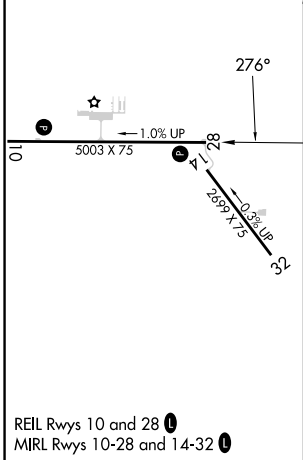
⚠ Rwy 28 helicopter visibility reduction below 3/4 SM NA. For uncompensated Baro-VNAV systems, LNAV/VNAV NA below -16°C or above 54°C. Baro-VNAV and VDP NA when using MKG altimeter setting. When local altimeter setting not received, use MKG altimeter setting; increase LPV DA to 1383 feet and all visibilities 1/2 SM; increase LNAV/VNAV DA to 1598 feet and all visibilities 3/8 SM; increase all MDAs 160 feet.

MISSED APPROACH: Climb to 3000 direct JADIT and hold.

| | | |
|---------------------------|--|---------------------------------|
| AWOS-3P 125.875 | MINNEAPOLIS CENTER 120.85 322.35 | UNICOM 122.8 (CTAF) 0 |
|---------------------------|--|---------------------------------|



| | |
|-----------------|-----------------|
| ELEV 994 | TDZE 975 |
|-----------------|-----------------|



| CATEGORY | A | B | C | D |
|--------------|-----------------------|-----------------------------|---|----|
| LPV DA | 1225-1 | 250 (300-1) | | NA |
| LNAV/VNAV DA | 1440-1 ^{3/8} | 465 (500-1 ^{3/8}) | | NA |
| LNAV MDA | 1440-1 | 465 (500-1) | | NA |
| CIRCLING | 1520-1 526 (600-1) | 1560-1 566 (600-1) | | NA |

EC-1, 11 JUN 2026 to 09 JUL 2026

EC-1, 11 JUN 2026 to 09 JUL 2026