

WAAS CH 70541 W28A	APP CRS 276°	Rwy Ldg TDZE Apt Elev	4201 1090 1090
--	------------------------	-----------------------------	---

RNAV (GPS) RWY 28

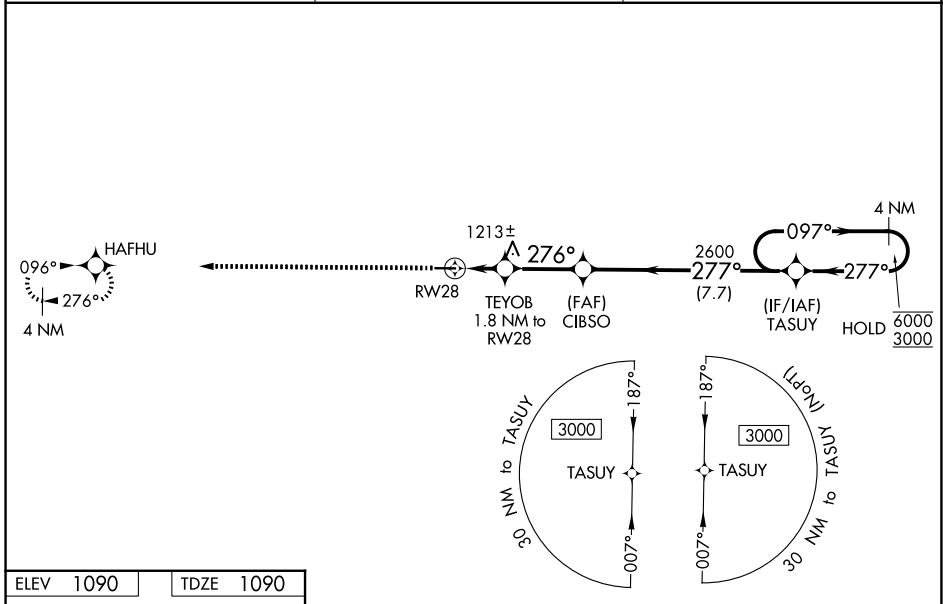
NEW CASTLE HENRY COUNTY MARLATT FLD (UWL)

RNP APCH - GPS.

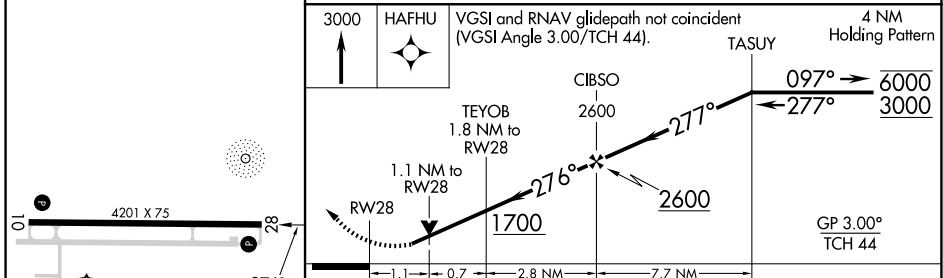
▼ Rwy 28 helicopter visibility reduction below ¾ SM NA. For uncompensated Baro-VNAV systems, LNAV/VNAV NA below -17°C or above 54°C. Baro-VNAV and VDP NA when using AID altimeter setting. When local altimeter setting not received, use AID altimeter setting; increase LPV DA to 1412 feet; increase LNAV/VNAV DA to 1549 feet and all visibilities ¼ SM; increase all MDAs 80 feet and LNAV visibility Cats C and D ¼ SM, and Circling visibility Cats C and D ½ SM.

▲ MISSED APPROACH: Climb to 3000 direct HAFHU and hold.

AWOS-3 132.375	INDIANAPOLIS APP CON 135.45 317.8	UNICOM 123.05 (CTAF) 0
--------------------------	---	----------------------------------



ELEV 1090	TDZE 1090
-----------	-----------



CATEGORY	A	B	C	D
LPV DA		1343-1	253 (300-1)	
LNAV/VNAV DA		1480-1½	390 (400-1½)	
LNAV MDA	1480-1	390 (400-1)	1480-1½	390 (400-1½)
CIRCLING	1520-1 430 (500-1)	1540-1 450 (500-1)	1760-1¾ 670 (700-1¾)	1760-2 670 (700-2)

MIRL Rwy 10-28 0
REIL Rwy 10 and 28 0

RNAV (GPS) RWY 28

EC-2, 11 JUN 2026 to 09 JUL 2026

EC-2, 11 JUN 2026 to 09 JUL 2026