

WAAS CH <b>45747</b> <b>W05A</b>	APP CRS <b>040°</b>	Rwy Ldg TDZE Apt Elev	<b>5097</b> <b>980</b> <b>980</b>
--	------------------------	-----------------------------	---

# RNAV (GPS) RWY 5

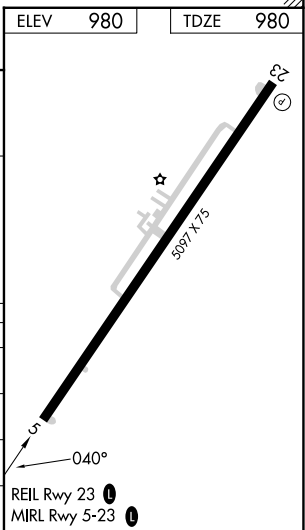
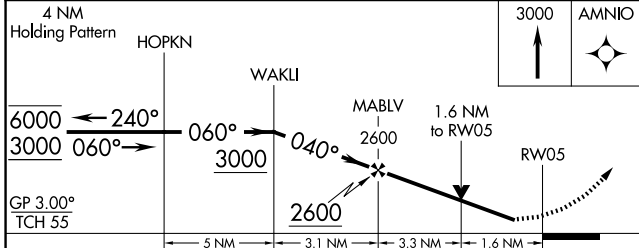
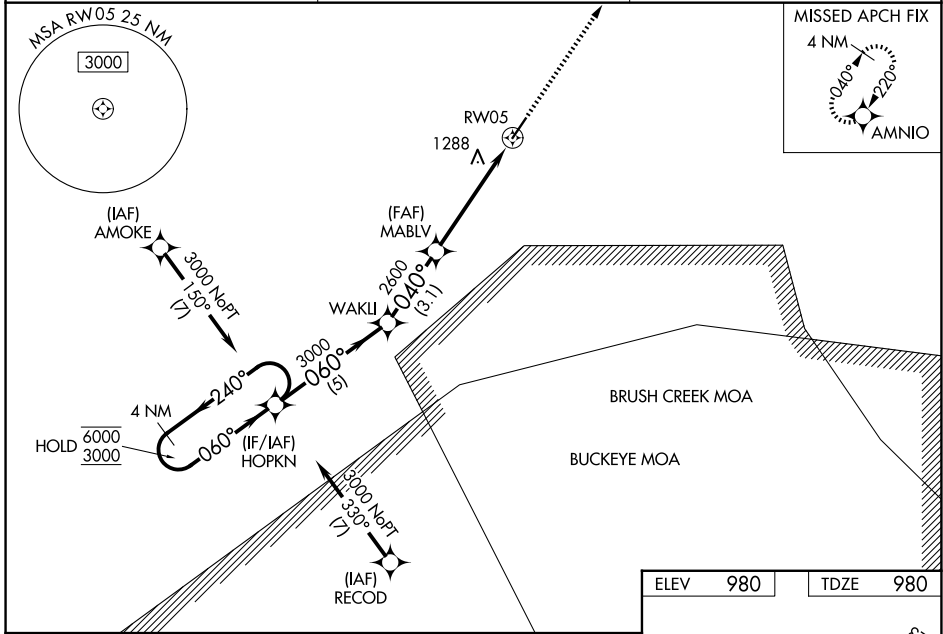
FAYETTE COUNTY (I23)

RNP APCH - GPS.

**⚠** Rwy 5 helicopter visibility reduction below ¼ SM NA. For uncompensated Baro-VNAV systems, LNAV/VNAV NA below -1.6°C or above 54°C. Baro-VNAV and VDP NA when using I66 altimeter setting. Circling Rwy 23 NA at night. When local altimeter setting not received, use I66 altimeter setting and increase LPV DA to 1287 feet; increase LNAV/VNAV DA to 1597 feet and all visibilities ½ SM. Increase all MDAs 60 feet and LNAV visibility Cat C/D ½ SM, and Circling visibility Cat C ¼ SM.

MISSED APPROACH: Climb to 3000 direct AMNIO and hold.

AWOS-3PT <b>132.1</b>	COLUMBUS APP CON <b>134.0 279.6</b>	UNICOM <b>122.8 (CTAF) 0</b>
--------------------------	--	---------------------------------



CATEGORY	A	B	C	D
LPV DA	1230-1 250 (300-1)			
LNAV/VNAV DA	1540-1½ 560 (600-1½)			
LNAV MDA	1540-1	560 (600-1)	1540-1½	560 (600-1½)
CIRCLING	1540-1 560 (600-1)	1600-1 620 (700-1)	1600-1¾ 620 (700-1¾)	1660-2¼ 680 (700-2¼)

EC-2, 11 JUN 2026 to 09 JUL 2026

EC-2, 11 JUN 2026 to 09 JUL 2026