

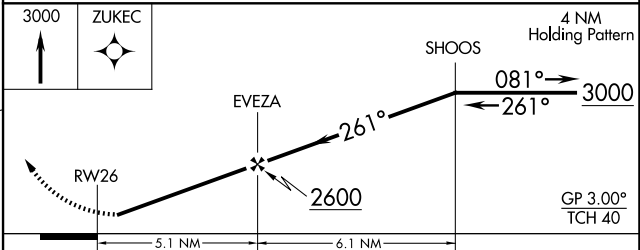
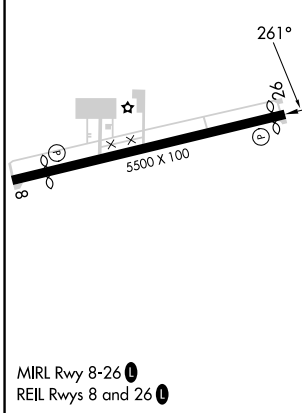
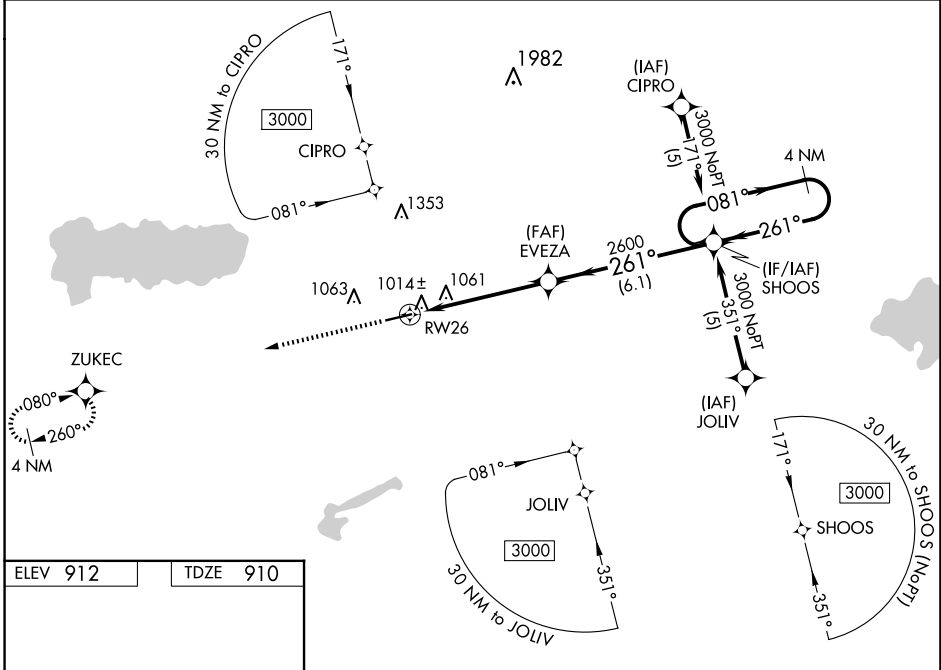
WAAS CH 72907 W26A	APP CRS 261°	Rwy Idg 5263 TDZE 910 Apt Elev 912
--	------------------------	---

RNAV (GPS) RWY 26

NEIL ARMSTRONG (AXV)

RNP APCH - GPS.	<p>MISSED APPROACH: Climb to 3000 direct ZUKEC and hold.</p>
<p>Baro-VNAV NA when using Lima altimeter setting. For uncompensated Baro-VNAV systems, LNAV/VNAV NA below -16°C or above 54°C. Rwy 26 helicopter visibility reduction below 1 SM NA. When local altimeter setting not received, use Lima altimeter setting and increase LPV DA to 1291 feet and all visibilities 1/8 SM. Increase LNAV/VNAV DA to 1324 feet and all visibilities 1/8 SM. Increase all MDAs 60 feet and LNAV visibility Cat C 1/4 SM.</p>	

AWOS-3PT 128.325	COLUMBUS APP CON 134.45 294.5	UNICOM 122.8 (CTAF)	122.7 0
----------------------------	---	-------------------------------	----------------



CATEGORY	A	B	C	D
LPV DA	1241-1¼	331 (400-1¼)		NA
LNAV/VNAV DA	1274-1¼	364 (400-1¼)		NA
LNAV MDA	1440-1	530 (600-1)	1440-1½ 530 (600-1½)	NA

EC-2, 11 JUN 2026 to 09 JUL 2026

EC-2, 11 JUN 2026 to 09 JUL 2026

MIRL Rwy 8-26 0
REIL Rws 8 and 26 0