

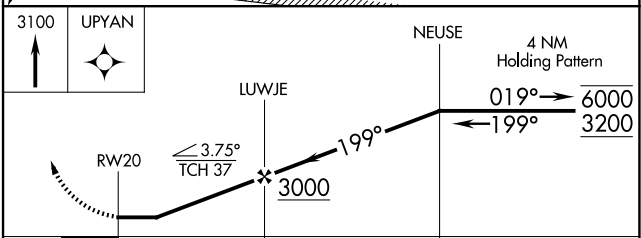
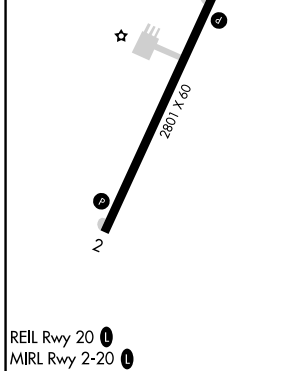
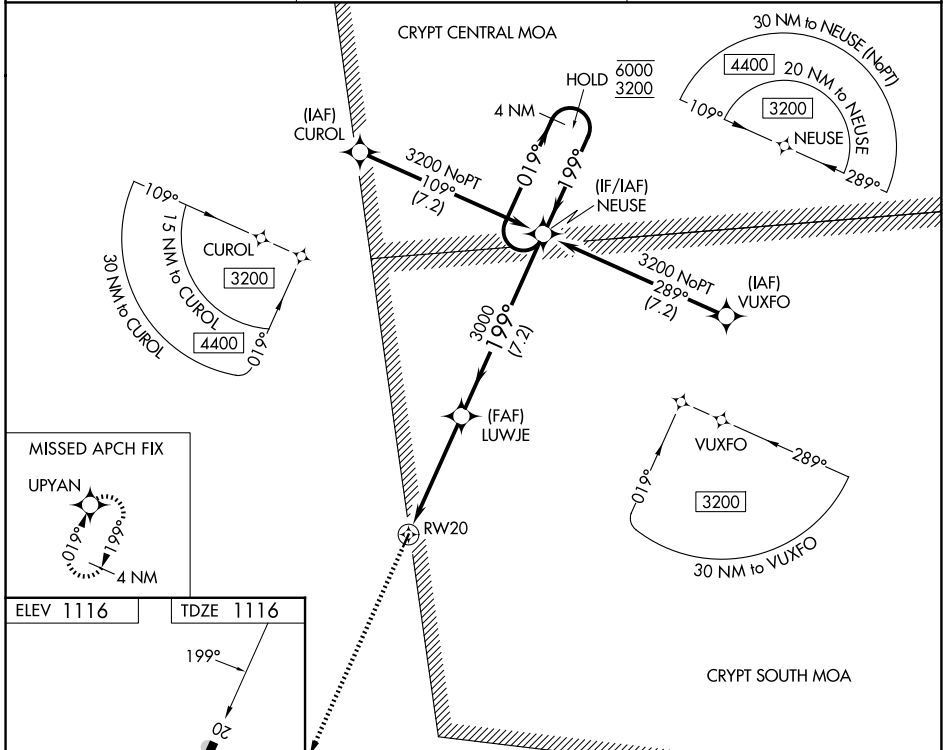
APP CRS	Rwy Ldg	<b>2801</b>
<b>199°</b>	TDZE	<b>1116</b>
	Apt Elev	<b>1116</b>

# RNAV (GPS) RWY 20

JAMES G WHITING MEML FLD (MEY)

RNP APCH - GPS.	<p>Procedure NA at night. Rwy 20 helicopter visibility reduction below 1 SM NA.</p> <p>▲ NA Use Sioux City altimeter setting, when not received use Denison altimeter setting and increase all MDAs 20 feet and increase visibility LNAV Cat C ½ SM and visibility Circling Cat C ¼ SM.</p>	<p>MISSED APPROACH: Climb to 3100 direct UPYAN and hold.</p>

SUX ASOS <b>119.45 270.8</b>	SIoux CITY APP CON★ <b>124.6 307.0</b>	UNICOM <b>122.8 (CTAF)</b>
---------------------------------	---	-------------------------------



CATEGORY	A	B	C	D
LNAV MDA	1860-1 744 (800-1)	1860-1¼ 744 (800-1¼)	1860-2 744 (800-2)	NA
CIRCLING	1880-1 764 (800-1)	1940-1¼ 824 (900-1¼)	1980-2½ 864 (900-2½)	NA

NC-3, 11 JUN 2026 to 09 JUL 2026

NC-3, 11 JUN 2026 to 09 JUL 2026