

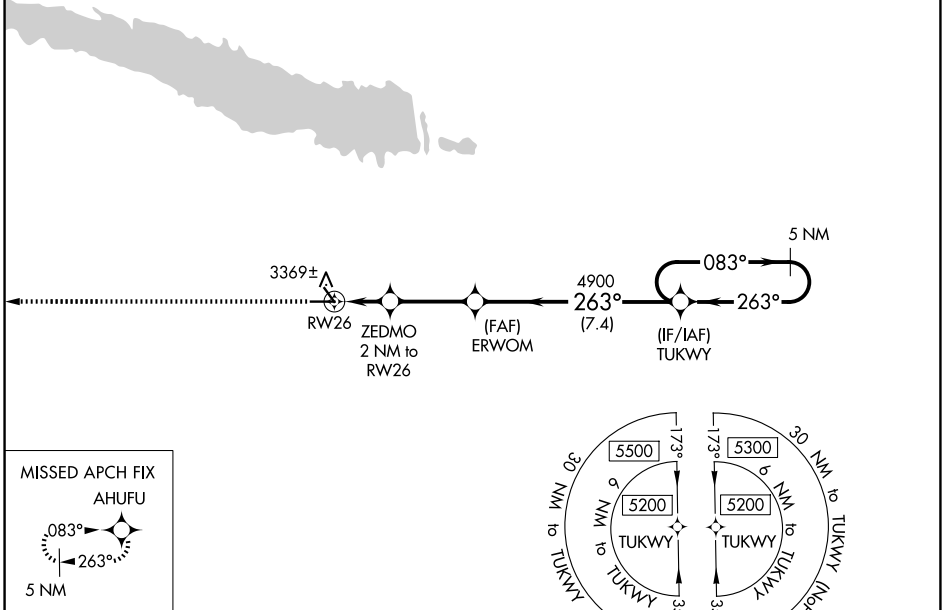
WAAS CH 53303 W26A	APP CRS 263°	Rwy Ldg TDZE Apt Elev	5102 3254 3279
--	------------------------	-----------------------------	---

RNAV (GPS) RWY 26

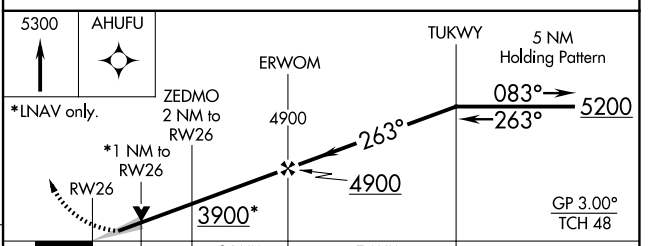
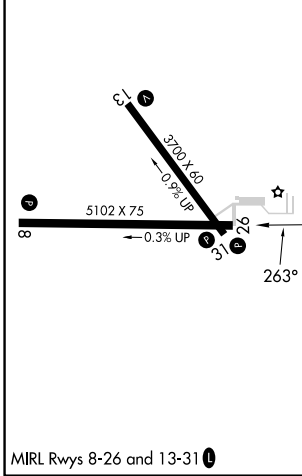
SEARLE FLD (OGA)

RNP APCH.	MISSED APPROACH: Climb to 5300 direct AHUFU and hold.
<p>▼ When local altimeter setting not received, use Imperial altimeter setting and increase all DA 86 feet and all MDA 100 feet, increase LPV all Cats visibility 1/8 SM, LNAV/VNAV all Cats and Circling Cat B visibility 1/4 SM. VDP and Baro-VNAV NA when using Imperial altimeter setting. For uncompensated Baro-VNAV systems, LNAV/VNAV NA below -21°C or above 54°C.</p>	

AWOS-3 121.275	DENVER CENTER 132.7 397.85	UNICOM 122.8 (CTAF)
--------------------------	--------------------------------------	-------------------------------



ELEV 3279	TDZE 3254
-----------	-----------



CATEGORY	A	B	C	D
LPV DA	3504-1	250 (300-1)		NA
LNAV/VNAV DA	3540-1	286 (300-1)		NA
LNAV MDA	3620-1	366 (400-1)		NA
CIRCLING	3940-1 661 (700-1)	4000-1 721 (800-1)		NA

NC-2, 11 JUN 2026 to 09 JUL 2026

NC-2, 11 JUN 2026 to 09 JUL 2026