

RNAV 1 - DME/DME/IRU or GPS.

RADAR required.

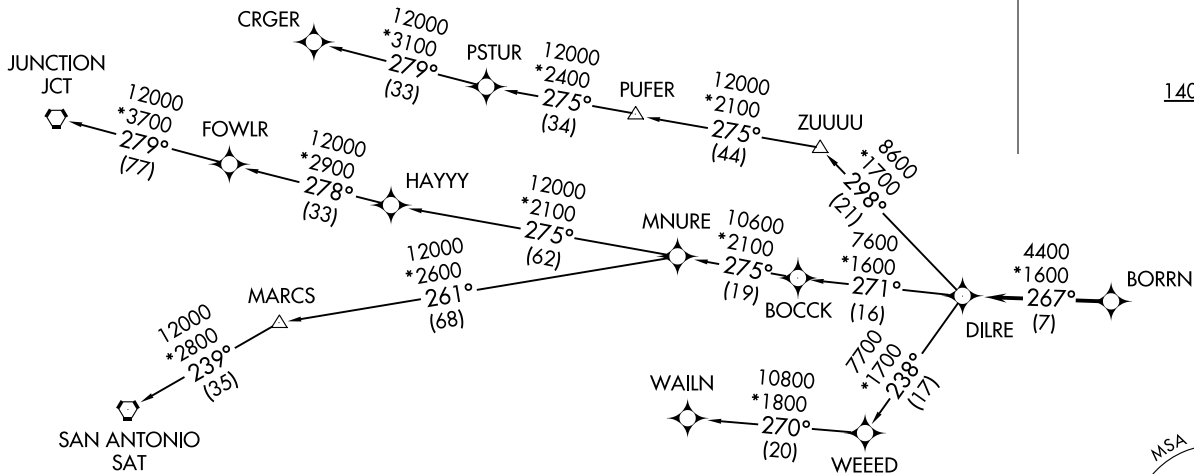
**TOP ALTITUDE:  
ASSIGNED BY ATC**

AWOS-3  
119.325  
CTAF  
123.0  
HOUSTON DEP CON  
119.7 281.4

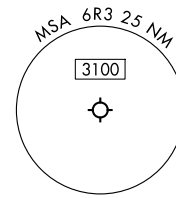
**TAKEOFF MINIMUMS**

Rwy 16: Standard with minimum  
climb of 500'/NM to 660.

Rwy 34: Standard with minimum  
climb of 500'/NM to 1000.



NOTE: CRGER-TRANSITION ATC assigned only  
for aircraft departing 54T, AXH, EFD, GLS,  
HPY, IWS, LBX, LVJ, SGR, TME, TØØ, T41.



NOTE: Chart not to scale.

(CONTINUED ON FOLLOWING PAGE)

BORRN SIX DEPARTURE (RNAV)  
(BORRN6.BORRN) 30NOV23  
CLEVELAND, TEXAS  
CLEVELAND MUNI (6R3)

(BORRN6.BORRN) 25051  
BORRN SIX DEPARTURE (RNAV)  
AL-6073 (FAA)  
CLEVELAND MUNI (6R3)  
CLEVELAND, TEXAS

# BORRN SIX DEPARTURE (RNAV)



## DEPARTURE ROUTE DESCRIPTION

TAKEOFF RUNWAY 16: Climb on heading 157° to 1400, for RADAR vectors to BORRN, thence. . . .

TAKEOFF RUNWAY 34: Climb on heading 337° to 2000, for RADAR vectors to BORRN, thence. . . .

. . . .on track 267° to DILRE, then on (transition). Maintain ATC assigned altitude. Expect filed altitude 10 minutes after departure.

CRGER TRANSITION (BORRN6.CRGER)

JUNCTION TRANSITION (BORRN6.JCT)

MNURE TRANSITION (BORRN6.MNURE)

SAN ANTONIO TRANSITION (BORRN6.SAT)

WAILN TRANSITION (BORRN6.WAILN)

SC-5, 11 JUN 2026 to 09 JUL 2026

SC-5, 11 JUN 2026 to 09 JUL 2026