

(INDIE8.INDIE) 21280

AL-6073 (FAA)

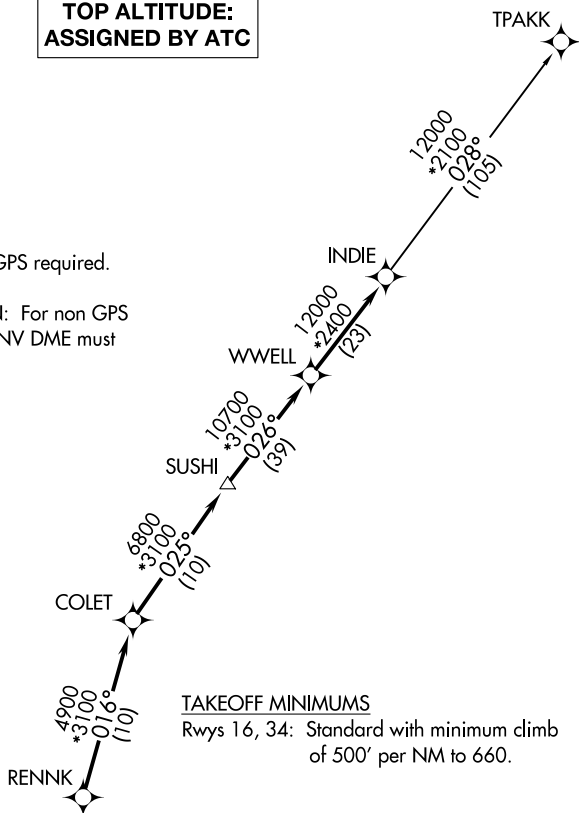
CLEVELAND MUNI (6R3)  
CLEVELAND, TEXAS

# INDIE EIGHT DEPARTURE (RNAV)

AWOS-3  
119.325  
CTAF  
123.0  
HOUSTON DEP CON  
119.7 281.4

**TOP ALTITUDE:  
ASSIGNED BY ATC**

- NOTE: RADAR required.
- NOTE: DME/DME/IRU or GPS required.
- NOTE: RNAV 1.
- NOTE: TPAKK TRANSITION: For non GPS equipped aircraft TNV DME must be operational.



### TAKEOFF MINIMUMS

Rwys 16, 34: Standard with minimum climb of 500' per NM to 660.

### DEPARTURE ROUTE DESCRIPTION

TAKEOFF RUNWAY 16: Climb on heading 157° to 1400 for RADAR vectors to RENNK, thence . . .

TAKEOFF RUNWAY 34: Climb on heading 312° to 2000 for RADAR vectors to RENNK, thence . . .

. . . on track 016° to COLET, then on track 025° to SUSHI, then on track 026° to WWELL, then on track 026° to INDIE, then on (transition). Maintain ATC assigned altitude. Expect filed altitude 10 minutes after departure.

TPAKK TRANSITION (INDIE8.TPAKK)



NOTE: Chart not to scale.

# INDIE EIGHT DEPARTURE (RNAV)

(INDIE8.INDIE) 07OCT21

CLEVELAND, TEXAS  
CLEVELAND MUNI (6R3)

SC-5, 11 JUN 2026 to 09 JUL 2026

SC-5, 11 JUN 2026 to 09 JUL 2026