

LOC/DME I-LVK 110.5 Chan 42	APP CRS 255°	Rwy Ldg TDZE 400 Apt Elev 400	5253
---	------------------------	---	-------------

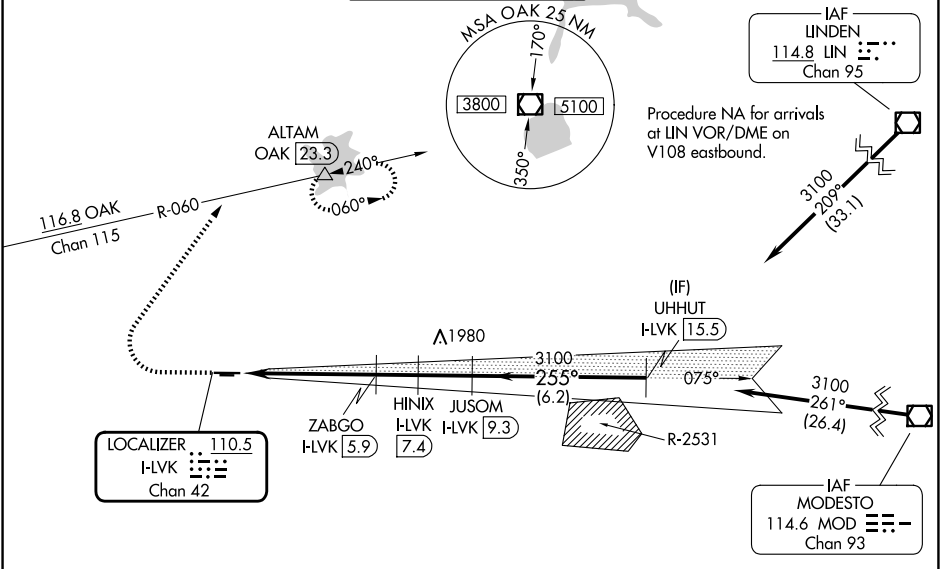
LOC RWY 25R

LIVERMORE MUNI (LVK)

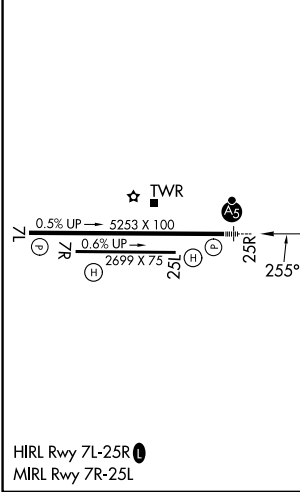
⚠ Circling to Rwy 25L NA at night.
Inop table does not apply to S-25R Cats C/D.
Circling NA north of Rwy 7L-25R.
DME required.

MALS
MISSED APPROACH: Climb to 2000 then climbing right turn to 5000 on heading 020° and OAK VOR/DME R-060 to ALTAM/OAK VOR/DME 23.3 DME and hold, continue climb-in-hold to 5000.
*Missed approach requires minimum climb of 235 feet per NM to 3600.

ATIS 119.65	NORCAL APP CON 123.85 278.3	LIVERMORE TOWER * 118.1 (CTAF) 239.25	GND CON 121.6	UNICOM 122.95
-----------------------	---------------------------------------	--	-------------------------	-------------------------



ELEV 400	TDZE 400
----------	----------



	2000	5000	OAK R-060	ALTAM	HINIX I-LVK [7.4]	JUSOM I-LVK [9.3]	UHHUT I-LVK [15.5]
		hdg 020°		△			
	I-LVK [1]	I-LVK [2.9]	ZABGO I-LVK [5.9]		3.00° TCH 47	3100	3100
	2 NM	2.9 NM	1.5 NM	1.9 NM	6.2 NM		
CATEGORY	A		B		C	D	
S-LOC 25R*	1080-1½		680 (700-½)		1080-1½ 680 (700-½)		
S-LOC 25R	2000-¾ 1600 (1600-¾)		2000-1 1600 (1600-1)		2000-3 1600 (1600-3)		
CIRCLING	2000-1¼ 1600 (1600-1¼)		2000-1½ 1600 (1600-1½)		2000-3 1600 (1600-3)		

SW-2, 11 JUN 2026 to 09 JUL 2026

SW-2, 11 JUN 2026 to 09 JUL 2026