

# EL DORADO ONE DEPARTURE

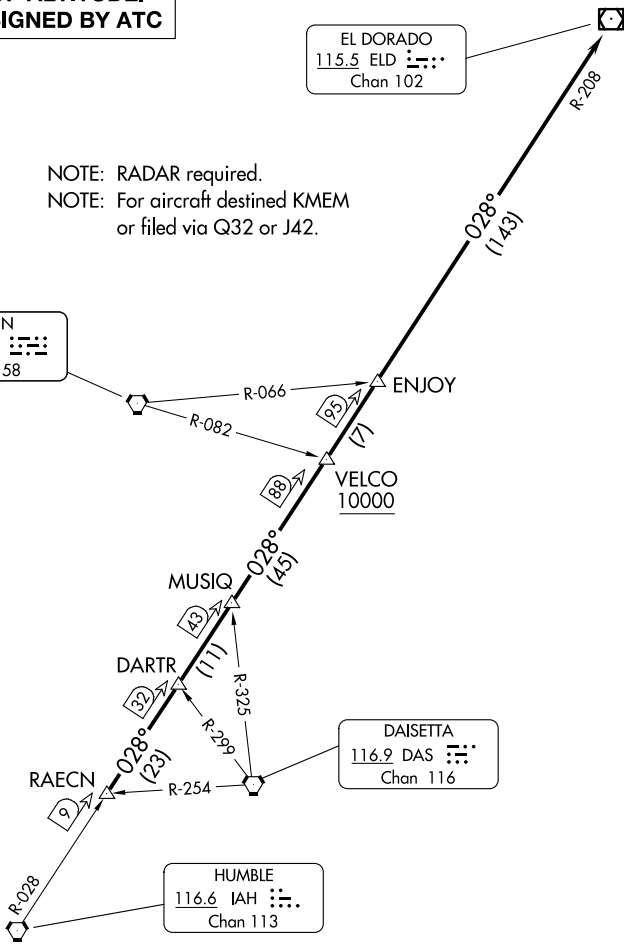
CLNC DEL  
121.15  
CTAF  
123.05  
HOUSTON DEP CON  
123.8 257.7

**TOP ALTITUDE:  
ASSIGNED BY ATC**

EL DORADO  
115.5 ELD :  
Chan 102

NOTE: RADAR required.  
NOTE: For aircraft destined KMEM  
or filed via Q32 or J42.

LUFKIN  
112.1 LFK :  
Chan 58



TAKEOFF MINIMUMS  
Rwys 15, 33: Standard.

NOTE: Chart not to scale.

## DEPARTURE ROUTE DESCRIPTION

TAKEOFF ALL RUNWAYS: When entering controlled airspace, climb on assigned heading for RADAR vectors to RAECN INT. Maintain ATC assigned altitude. Expect filed altitude 10 minutes after departure, thence. . . .

. . . . on IAH R-028 and the ELD R-208 to ELD VOR/DME, cross VELCO INT at or above 10000.

SC-5, 11 JUN 2026 to 09 JUL 2026

SC-5, 11 JUN 2026 to 09 JUL 2026