

(STYCK8.STYCK) 21280

AL-6079 (FAA)

WEST HOUSTON (IWS)

STYCK EIGHT DEPARTURE (RNAV)

HOUSTON, TEXAS

CLNC DEL

121.15

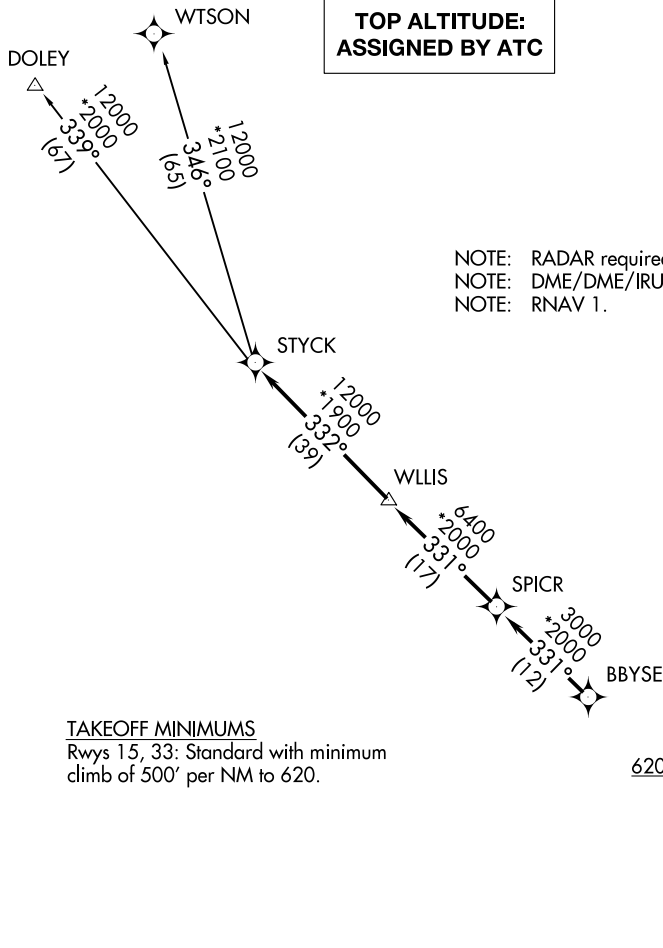
CTAF

123.05

HOUSTON DEP CON

123.8 257.7

**TOP ALTITUDE:
ASSIGNED BY ATC**



- NOTE: RADAR required.
- NOTE: DME/DME/IRU or GPS required.
- NOTE: RNAV 1.

TAKEOFF MINIMUMS

Rwys 15, 33: Standard with minimum climb of 500' per NM to 620.

NOTE: Chart not to scale.



DEPARTURE ROUTE DESCRIPTION

TAKEOFF RUNWAY 15: Climb on heading 150° to 620 for RADAR vectors to BBYSE, thence. . .

TAKEOFF RUNWAY 33: Climb on heading 330° to 620 for RADAR vectors to BBYSE, thence. . .

. . . on track 331° to SPICR, then on track 331° to WLLIS, then on track 332° to STYCK, then on (transition). Maintain ATC assigned altitude. Expect filed altitude 10 minutes after departure.

DOLEY TRANSITION (STYCK8.DOLEY)

WTSON TRANSITION (STYCK8.WTSON)

STYCK EIGHT DEPARTURE (RNAV)

(STYCK8.STYCK) 07OCT21

HOUSTON, TEXAS

WEST HOUSTON (IWS)

SC-5, 11 JUN 2026 to 09 JUL 2026

SC-5, 11 JUN 2026 to 09 JUL 2026